



**Critical**  
manufacturing  
an ASM PT company

# How to: Manage BOM Items

## 10.2

April 2026

### DOCUMENT ACCESS

Public

### DISCLAIMER

The contents of this document are under copyright of Critical Manufacturing S.A. it is released on condition that it shall not be copied in whole, in part or otherwise reproduced (whether by photographic, or any other method) and the contents therefore shall not be divulged to any person other than that of the addressee (save to other authorized offices of his organization having need to know such contents, for the purpose for which disclosure is made) without prior written consent of submitting company.

# How to: Manage BOM Items

1. Go to the Business Data menu.



2. Select the BOM entity.

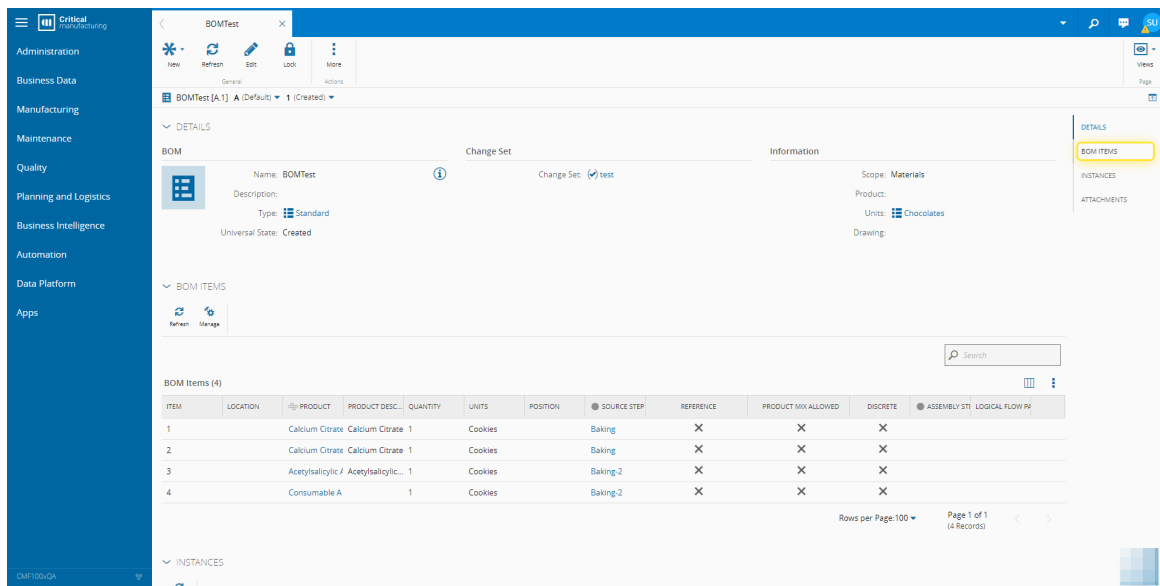


3. Select the BOM you need.

(BOMTest [A] for this example)

NAME	DESCRIPTION
Acetylsalicylic Acid ABS [A]	Acetylsalicylic Acid ABS BOM
Acetylsalicylic Acid REL [A]	Acetylsalicylic Acid REL BOM
Belgas [A]	Belgas BOM
<b>BOMTest [A]</b>	
Durable [A]	
SMT [A]	

#### 4. Select the BOM ITEMS section.



The screenshot shows the 'BOMTest [A]' details page. The 'BOM ITEMS' section is expanded, displaying a table with 4 items. The table columns are: ITEM, LOCATION, PRODUCT, PRODUCT DESC., QUANTITY, UNITS, POSITION, SOURCE STEP, REFERENCE, PRODUCT MIX ALLOWED, DISCRETE, ASSEMBLY ST, and LOGICAL FLOW PH.

ITEM	LOCATION	PRODUCT	PRODUCT DESC.	QUANTITY	UNITS	POSITION	SOURCE STEP	REFERENCE	PRODUCT MIX ALLOWED	DISCRETE	ASSEMBLY ST	LOGICAL FLOW PH
1		Calcium Citrate	Calcium Citrate	1	Cookies	Baking		X	X	X		
2		Calcium Citrate	Calcium Citrate	1	Cookies	Baking		X	X	X		
3		Acetylsalicylic / Acetylsalicylic...		1	Cookies	Baking:2		X	X	X		
4		Consumable A		1	Cookies	Baking:2		X	X	X		

#### 5. Select Manage.

For more information, see [Manage BOM Items - Critical Manufacturing Documentation Portal](#)

BOMTest [A.1] A (Default) 1 (Created)

BOM ITEMS

Refresh Manage

BOM Items (4)

ITEM	LOCATION	PRODUCT	PRODUCT DESC...	QUANTITY	UNITS	POSITION	SOURCE
1		Calcium Citrate	Calcium Citrate	1	Cookies		Baking
2		Calcium Citrate	Calcium Citrate	1	Cookies		Baking
3		Acetylsalicylic A	Acetylsalicylic...	1	Cookies		Baking

6. Add, remove or re-order as needed.

For this example, we are going to Add.

Manage BOM Items

BOM ITEMS SUBSTITUTES

BOMTest [A.1]

BOM Items

PRODUCT	QTY
Calcium Citrate [A] (Calcium Citrate) <i>No Position</i>	1 Cookies
Calcium Citrate [A] (Calcium Citrate) <i>No Position</i>	1 Cookies
Acetylsalicylic Acid [A] (Acetylsalicylic Acid) <i>No Position</i>	1 Cookies
Consumable A [A] <i>No Position</i>	1 Cookies

BOM Items Details

\* Product: Calcium Citrate [A]

Product Description: Calcium Citrate

\* Quantity: 1

Units: Cookies

Location:

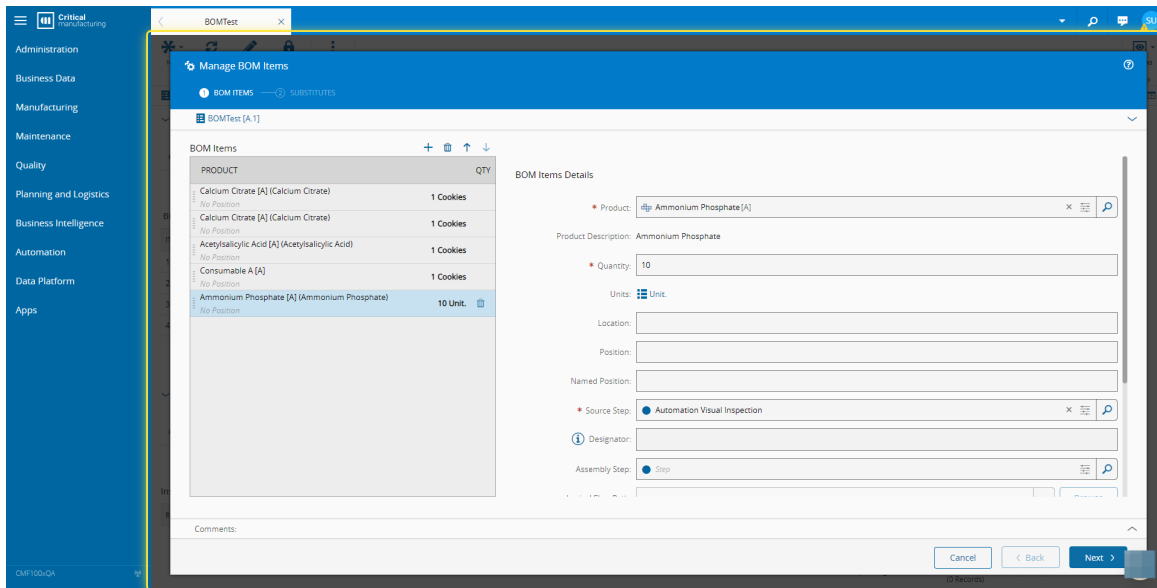
Position:

Named Position:

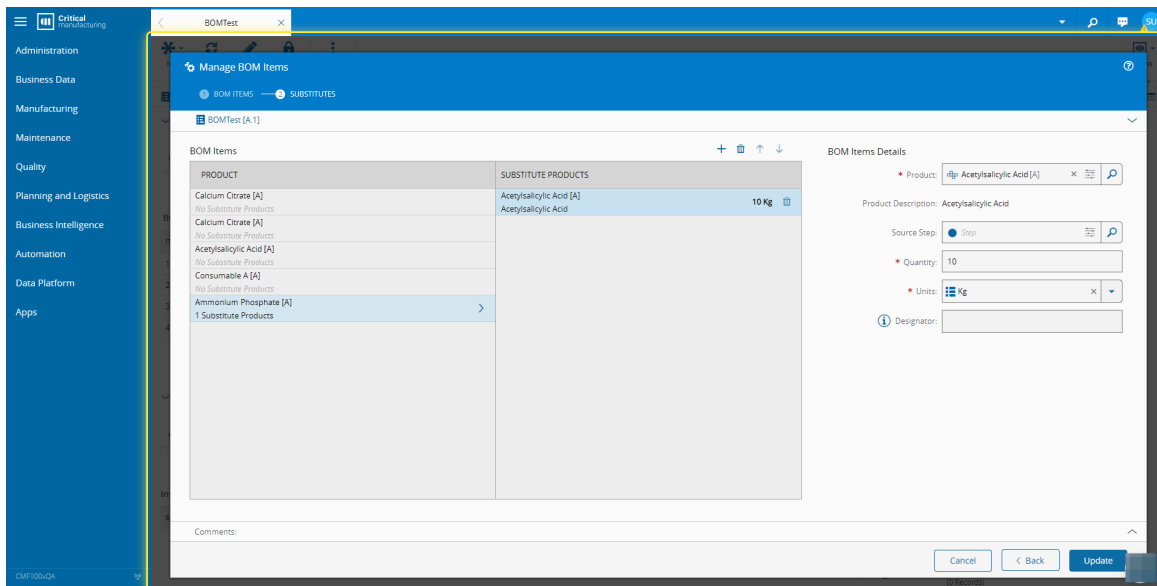
\* Source Step: Baking

Designator:

7. Enter the necessary information and select Next.



8. Add the necessary information for the Substitute Products if needed and then select Update.





# Legal Information

## **Disclaimer**

The information contained in this document represents the current view of Critical Manufacturing on the issues discussed as of the date of publication. Because Critical Manufacturing must respond to changing market conditions, it should not be interpreted to be a commitment on the part of Critical Manufacturing, and Critical Manufacturing cannot guarantee the accuracy of any information presented after the date of publication. This document is for informational purposes only.

Critical Manufacturing makes no warranties, express, implied or statutory, as to the information herein contained.

## **Confidentiality Notice**

All materials and information included herein are being provided by Critical Manufacturing to its Customer solely for Customer internal use for its business purposes. Critical Manufacturing retains all rights, titles, interests in and copyrights to the materials and information herein. The materials and information contained herein constitute confidential information of Critical Manufacturing and the Customer must not disclose or transfer by any means any of these materials or information, whether total or partial, to any third party without the prior explicit consent by Critical Manufacturing.

## **Copyright Information**

All title and copyrights in and to the Software (including but not limited to any source code, binaries, designs, specifications, models, documents, layouts, images, photographs, animations, video, audio, music, text incorporated into the Software), the accompanying printed materials, and any copies of the Software, and any trademarks or service marks of Critical Manufacturing are owned by Critical Manufacturing unless explicitly stated otherwise. All title and intellectual property rights in and to the content that may be accessed through use of the Software is the property of the respective content owner and is protected by applicable copyright or other intellectual property laws and treaties.

## **Trademark Information**

Critical Manufacturing is a registered trademark of Critical Manufacturing.

All other trademarks are property of their respective owners.