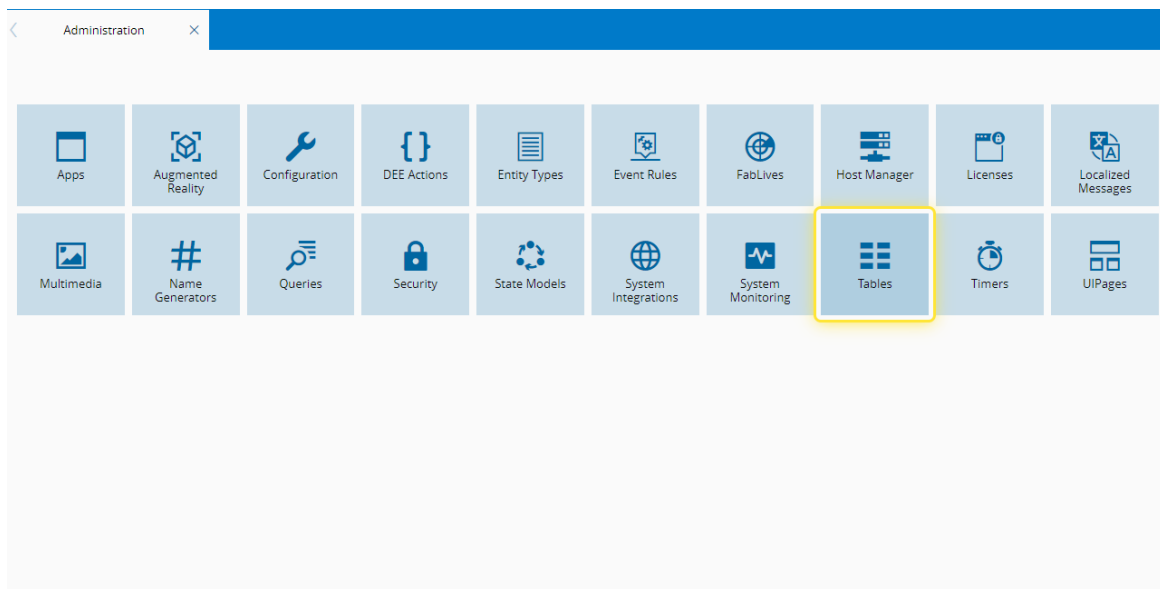


How to: Add Value to Smart Table

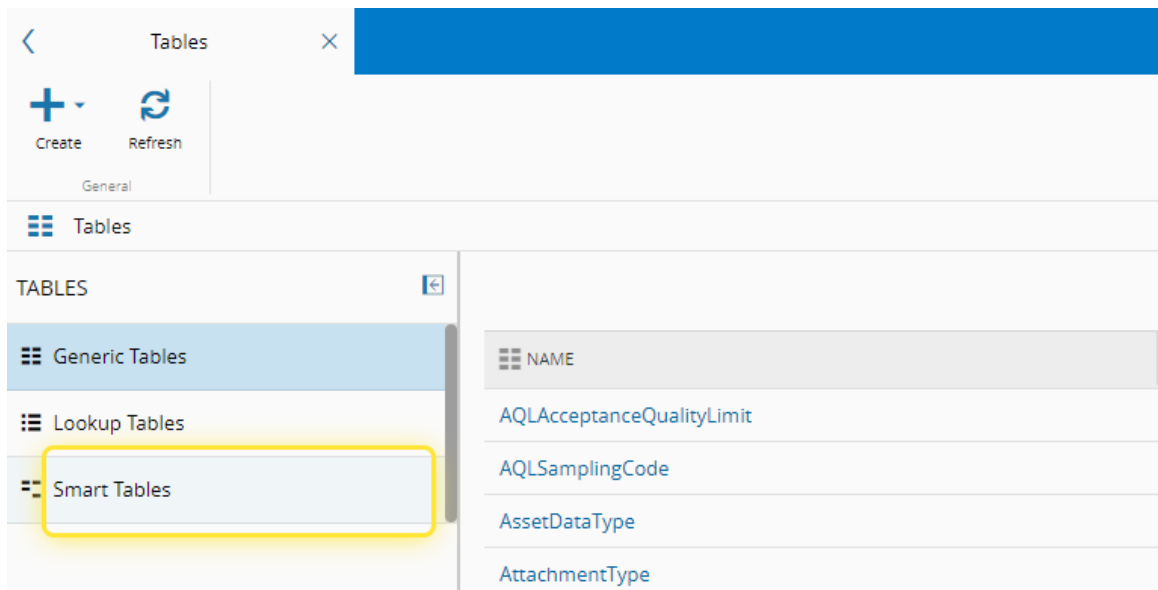
1. Go to the Administration menu.



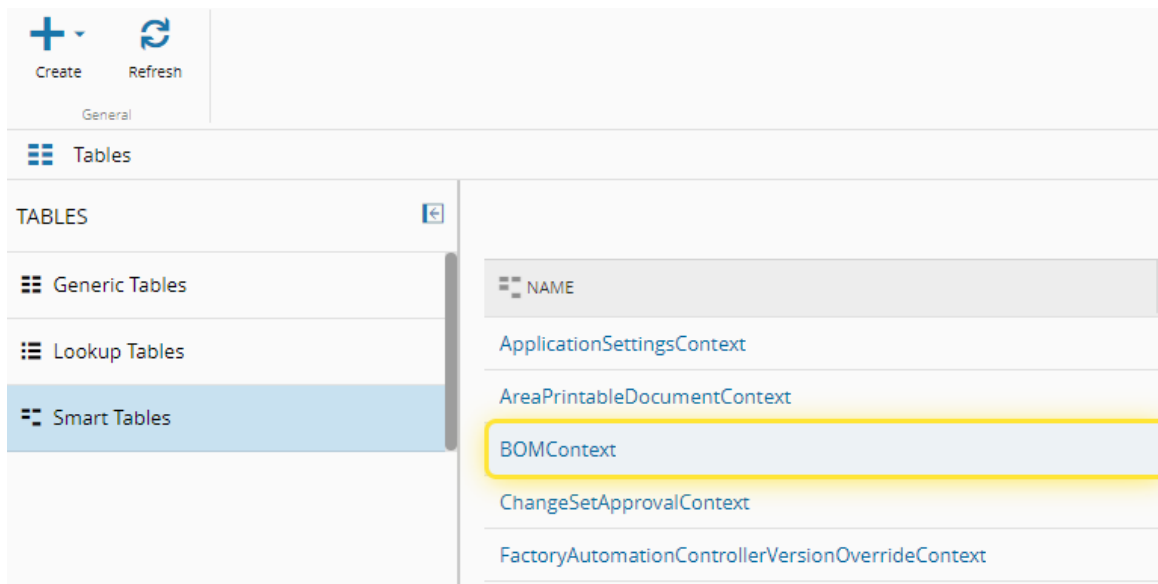
2. Select the Tables tile.



3. Select the Smart Tables option.

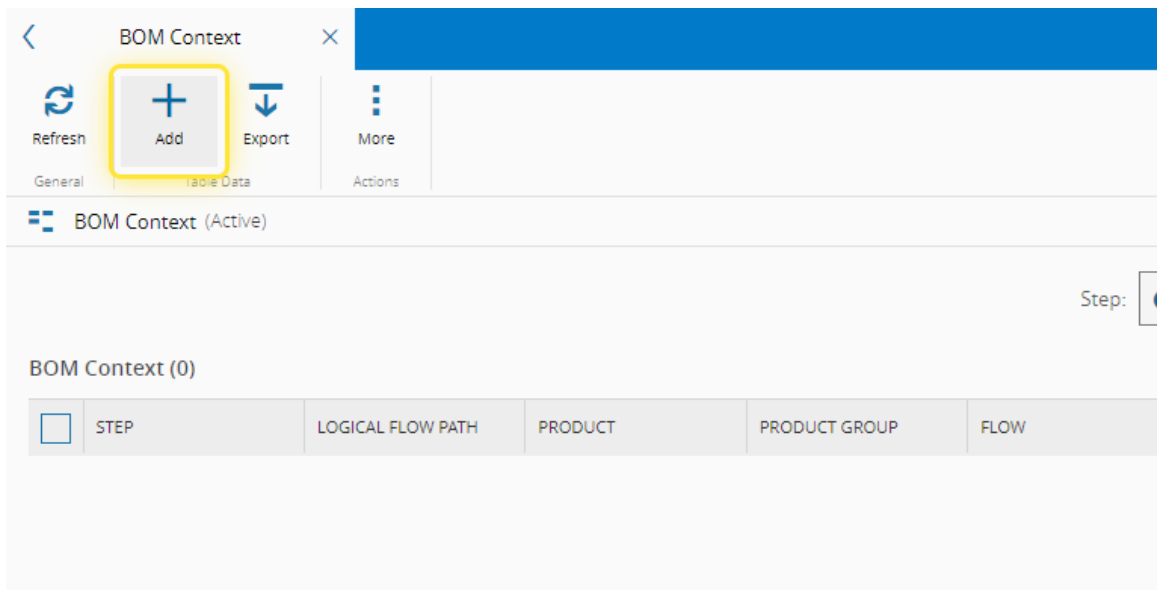


4. Select the Name of the Smart Table you need.

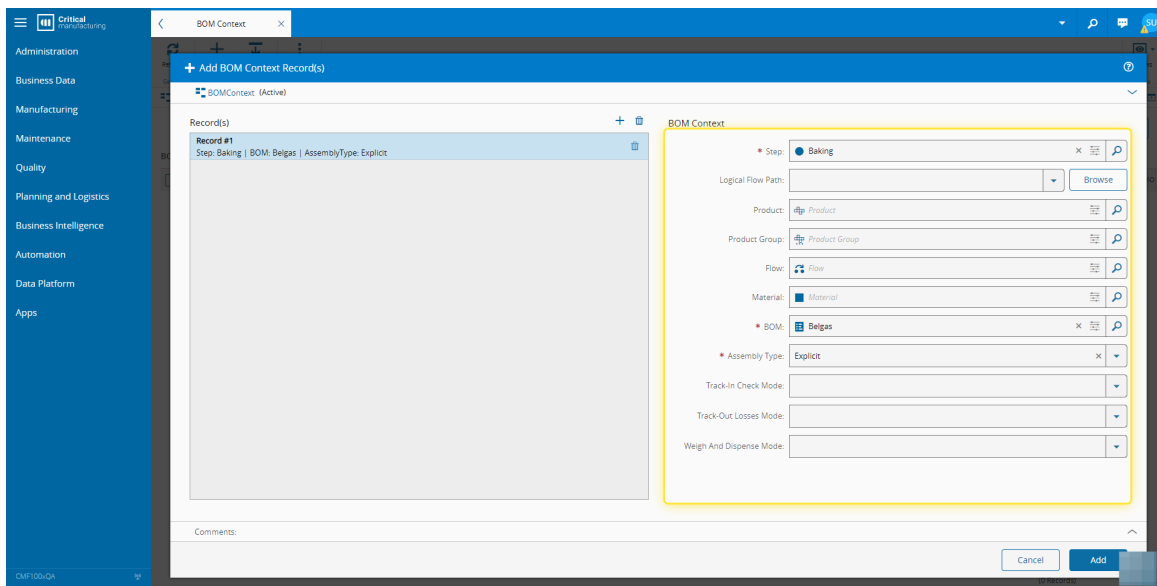


5. Select the Add button.

For more information, see [Smart Tables - Critical Manufacturing Documentation Portal](#)



6. Complete the necessary fields.



7. Select the Add button.

The screenshot displays the 'Add BOM Context Records' dialog box within the Critical Manufacturing 10.2 application. The interface is divided into several sections:

- Left Panel:** A vertical navigation menu with categories: Administration, Business Data, Manufacturing, Maintenance, Quality, Planning and Logistics, Business Intelligence, Automation, Data Platform, and Apps.
- Records List:** A table with one entry:

Record #1
Step: Baking BOM: Belgas AssemblyType: Explicit
- BOM Context Form:** A configuration area on the right with the following fields:
 - Step: Baking (with a search icon)
 - Logical Flow Path: (with a 'Browse' button)
 - Product: (with a search icon)
 - Product Group: (with a search icon)
 - Flow: (with a search icon)
 - Material: (with a search icon)
 - BOM: Belgas (with a search icon)
 - Assembly Type: Explicit (with a search icon)
 - Track-In Check Mode: (dropdown menu)
 - Track-Out Losses Mode: (dropdown menu)
 - Weigh And Dispense Mode: (dropdown menu)
- Bottom:** A 'Comments' text area and two buttons: 'Cancel' and 'Add' (highlighted with a yellow box).