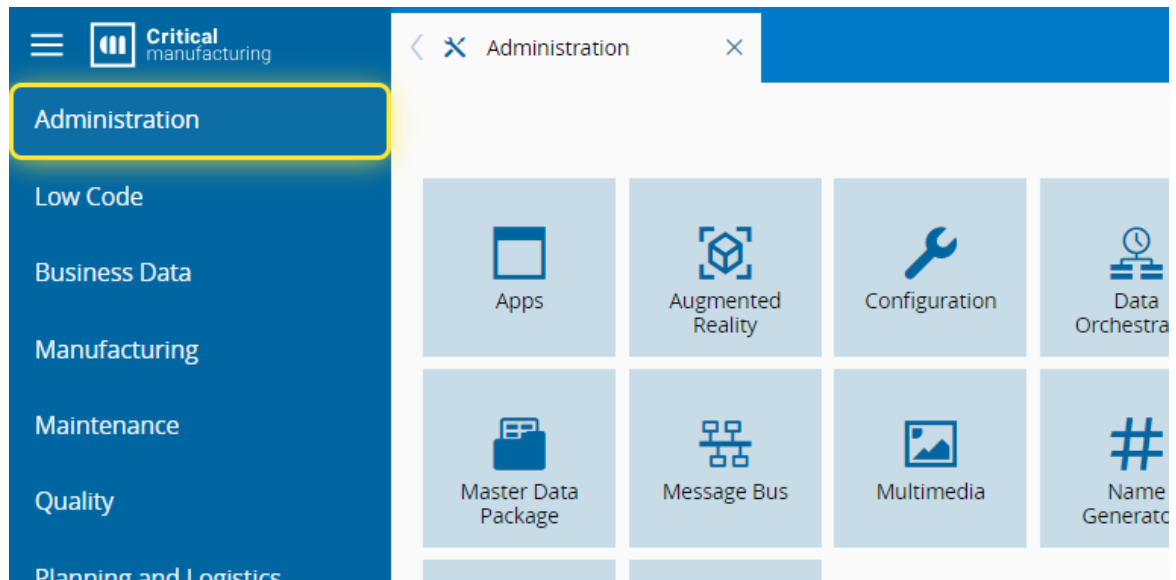
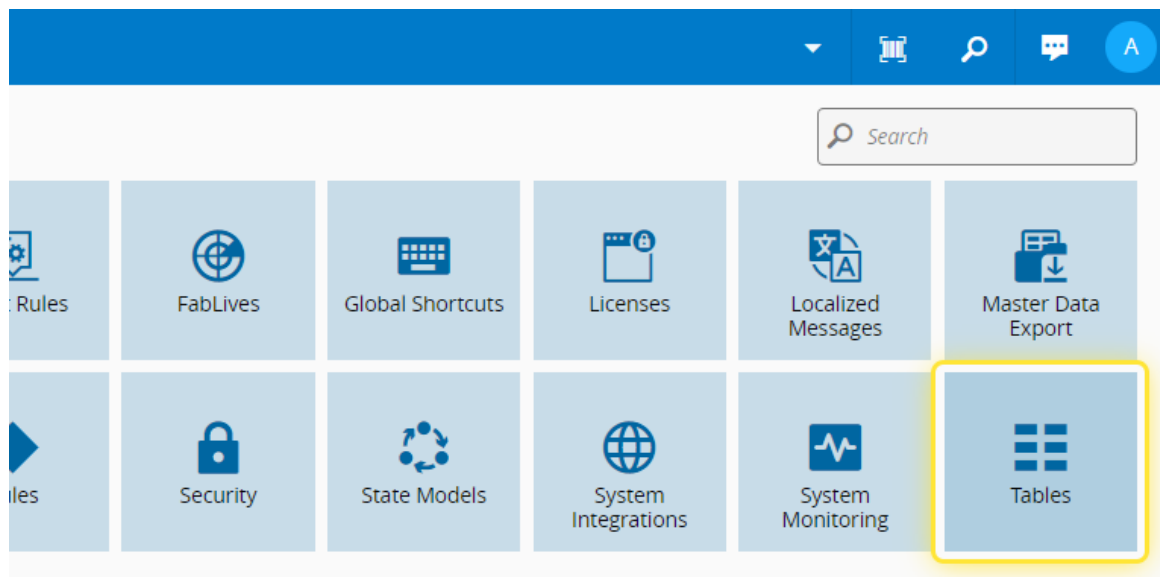


## How to: Create a Smart Table

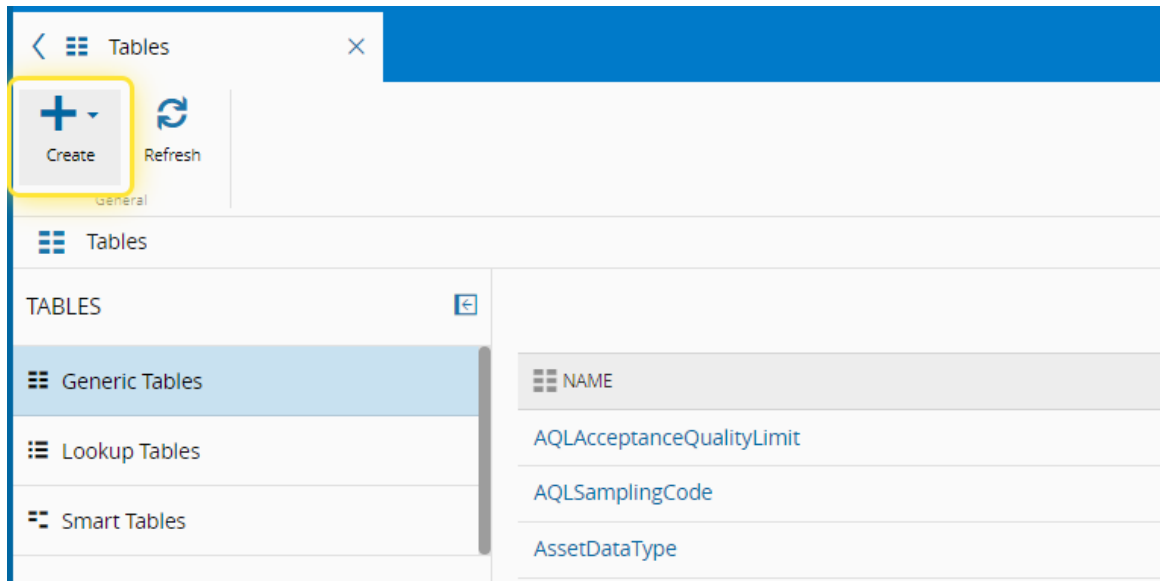
1. Go to the Administration menu.



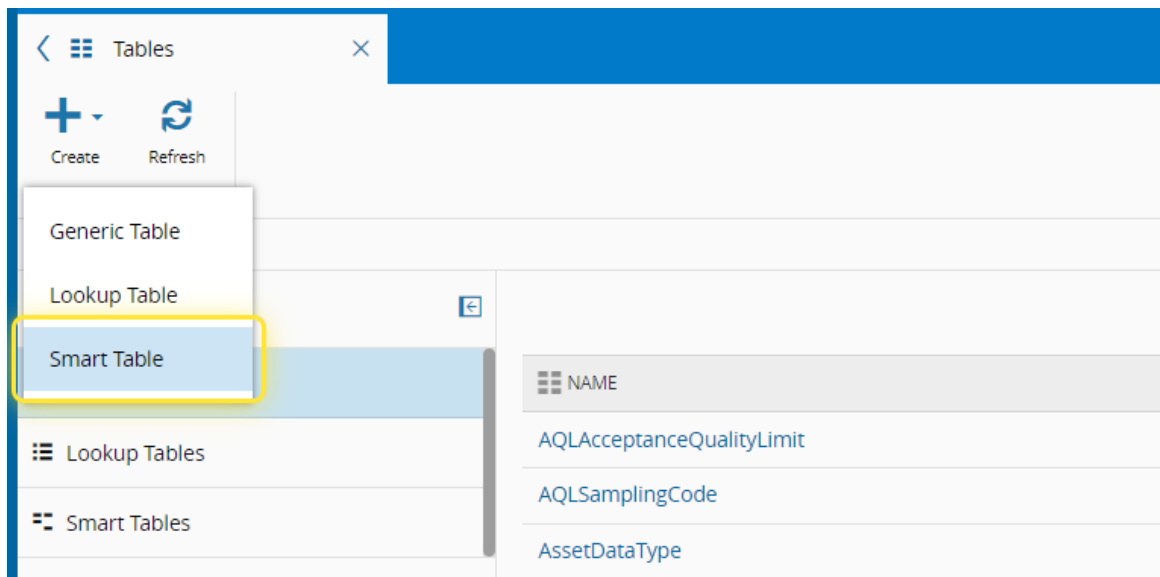
2. Select Tables.



3. Select the Create button.

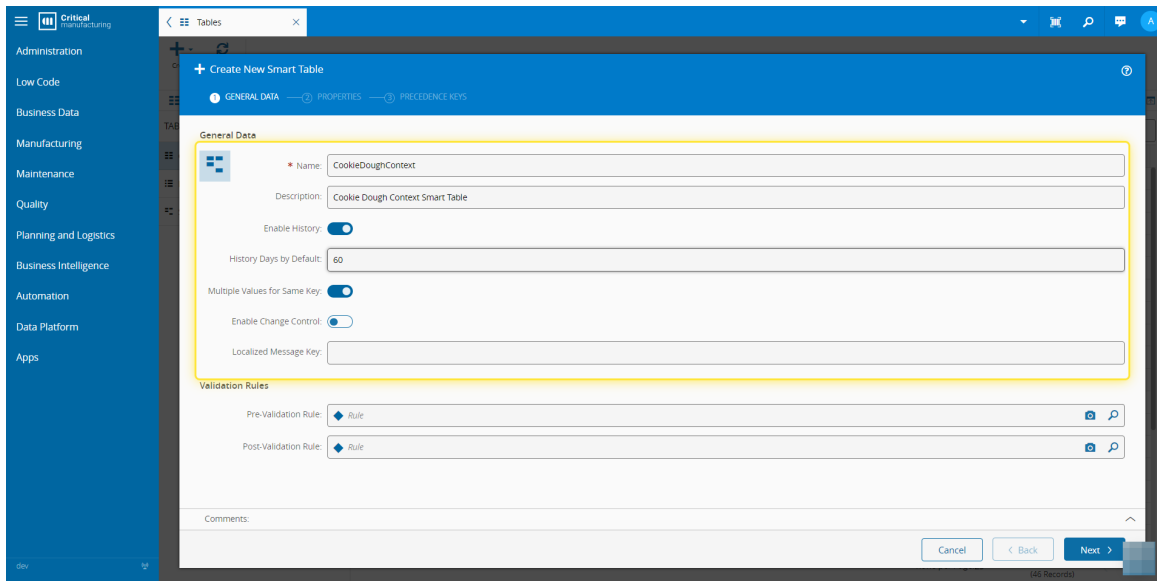


4. Select Smart Table.

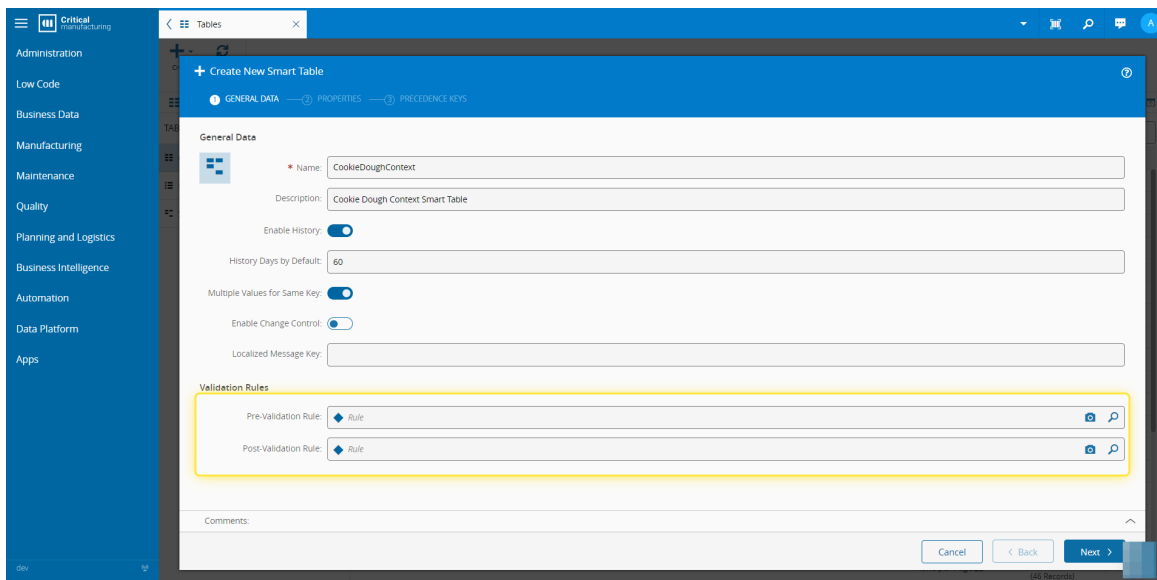


5. Under the General Data section, fill in all the necessary information.

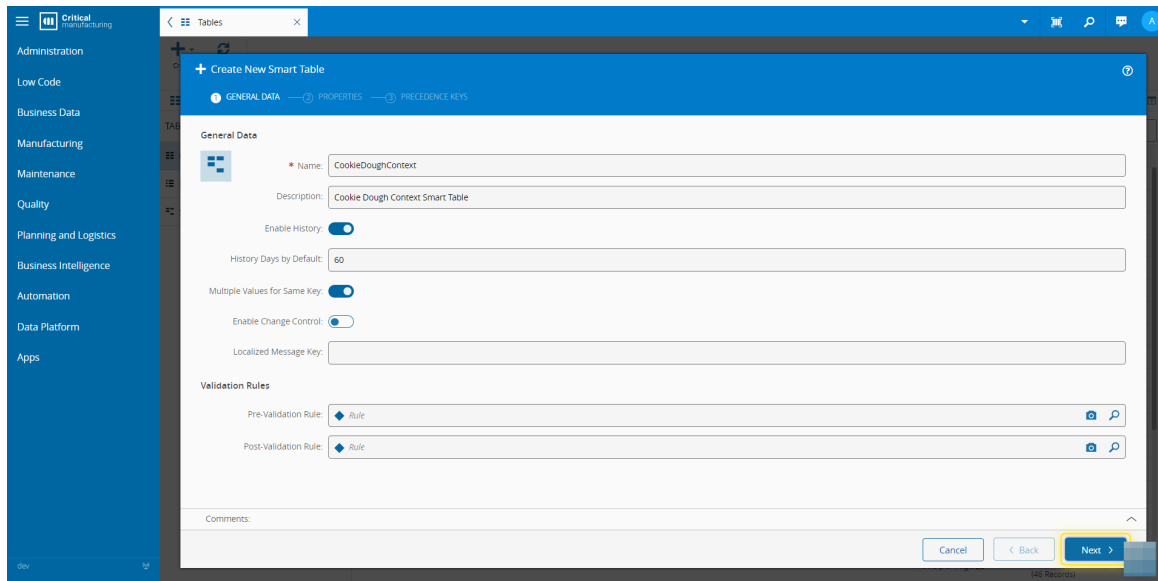
The Name must not contain any whitespaces.



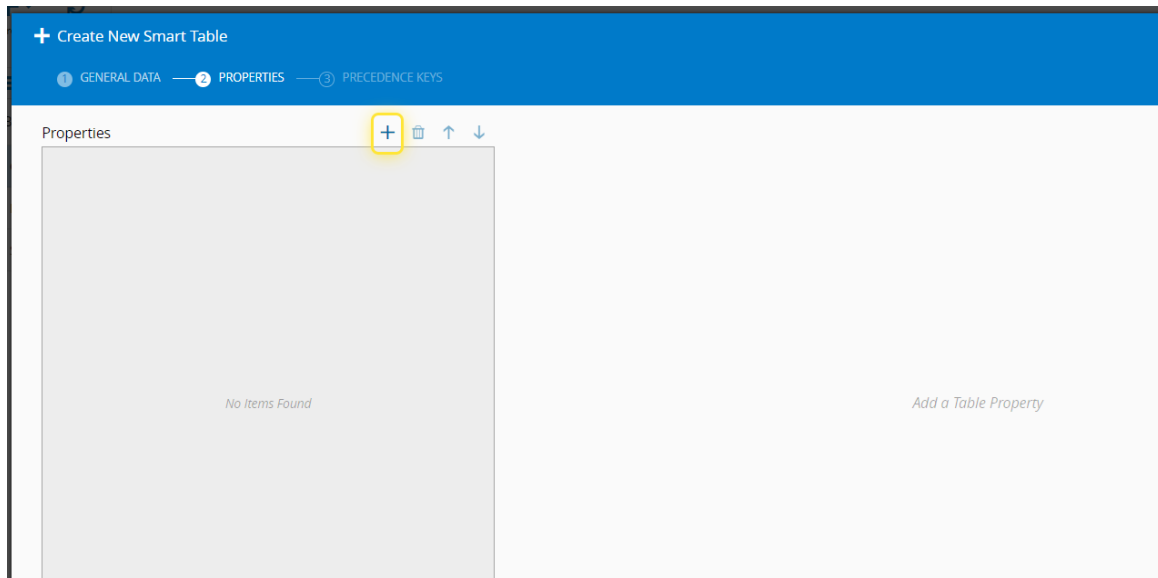
6. Optionally, add a Pre-Validation Rule or a Post-Validation Rule.



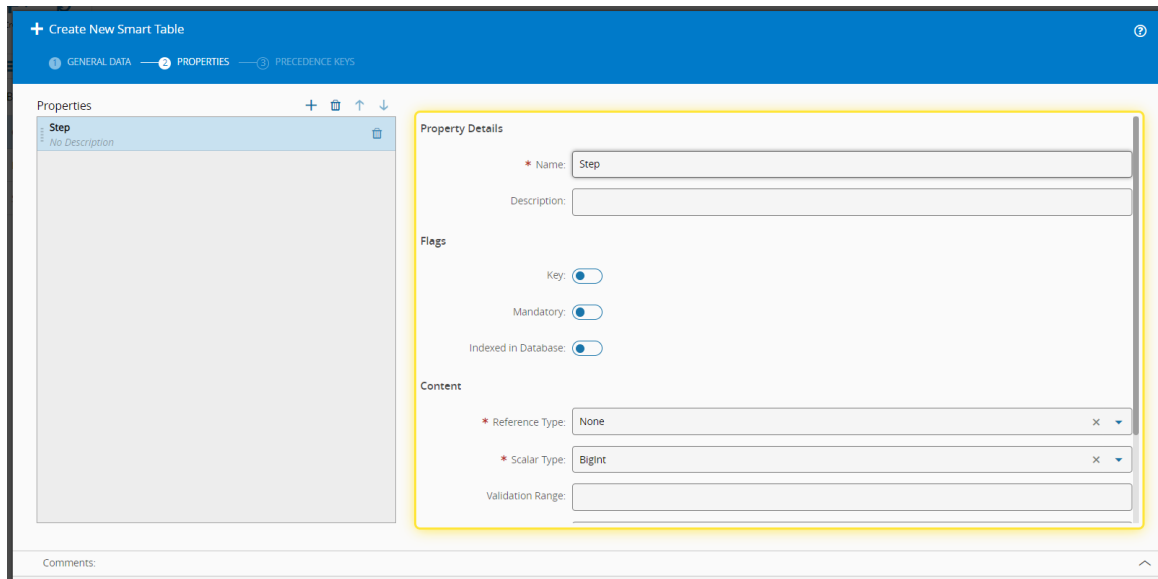
7. Select Next.



8. Select the + icon to add a new property.

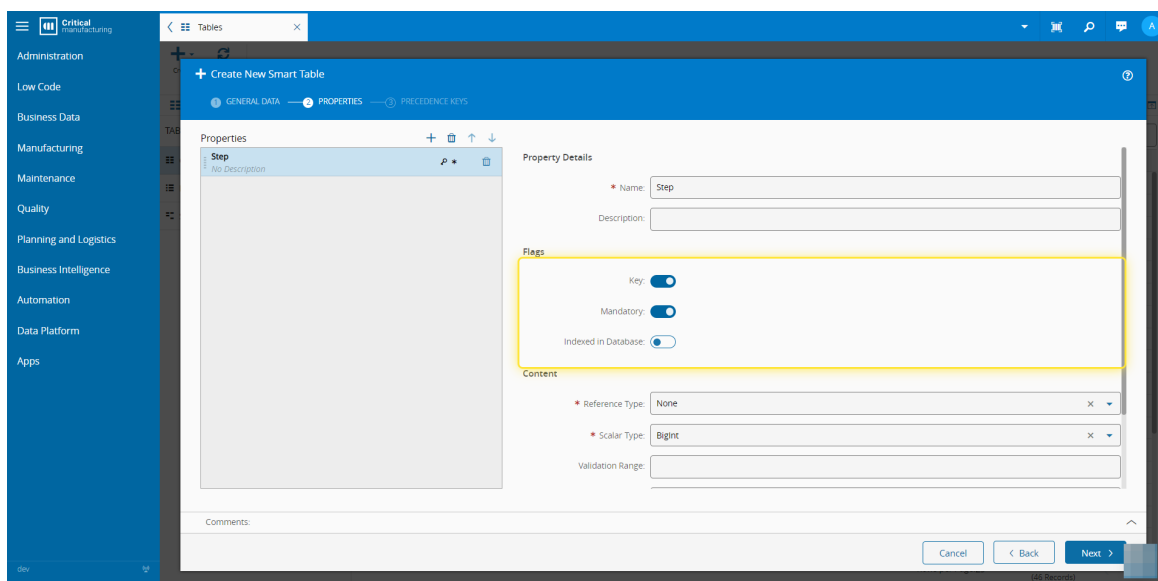


9. Fill in the necessary information under the Property Details.

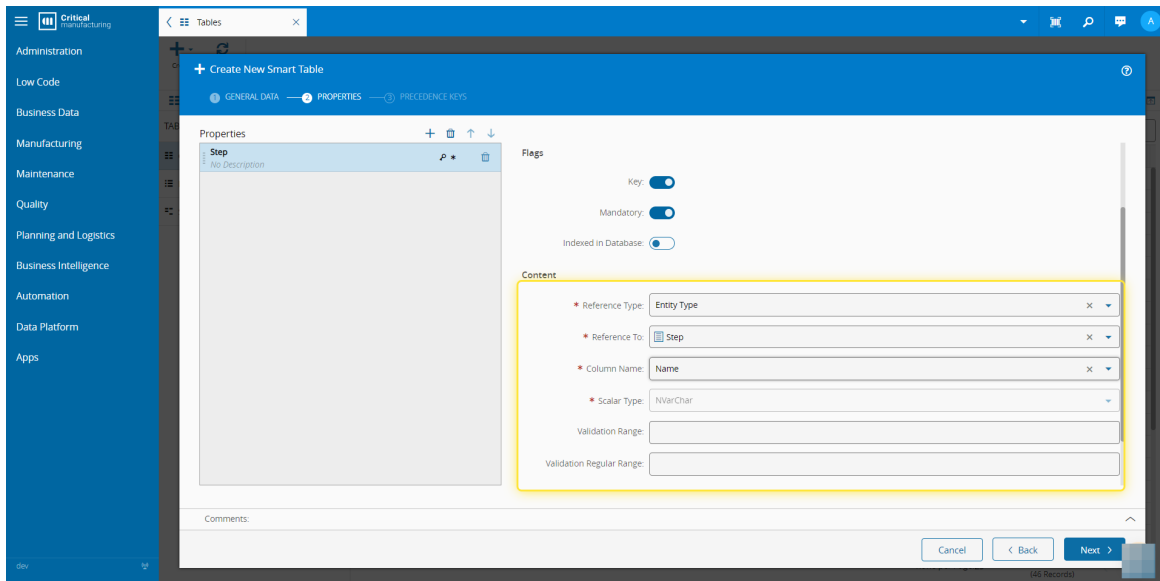


## 10. Set the necessary Flags.

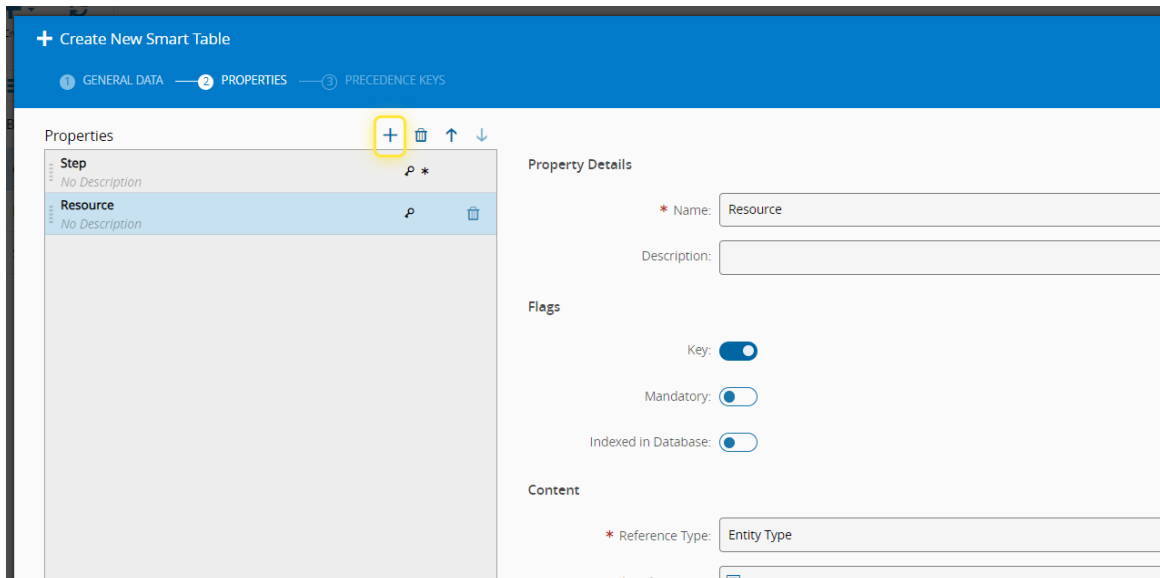
You must specify at least one property as the **Key** by enabling the corresponding toggle button.



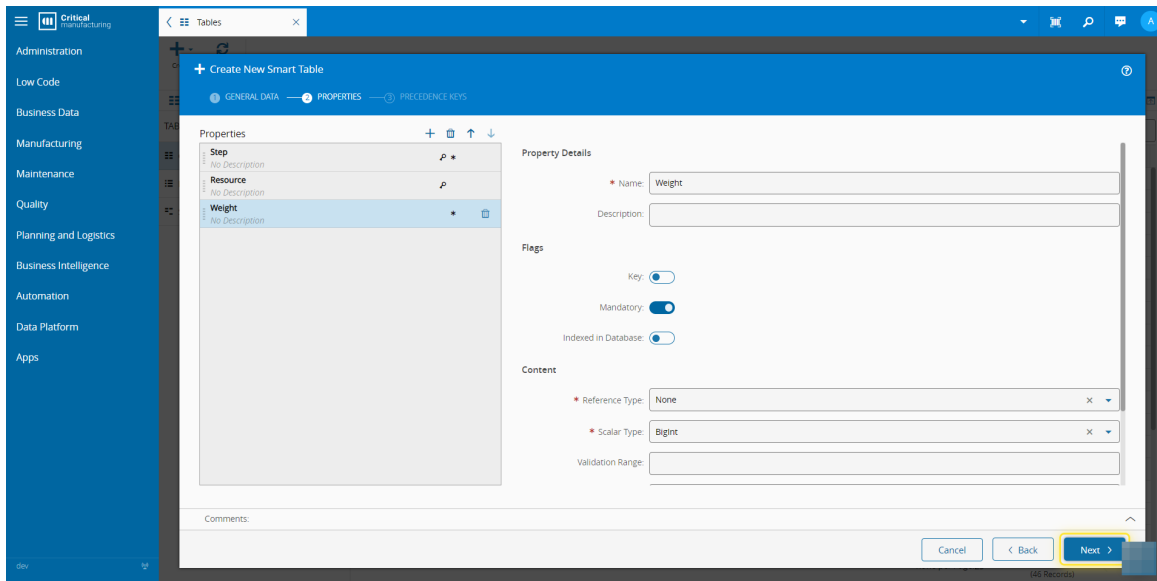
## 11. Fill in the necessary information in the Content section.



12. Add as many properties as needed.

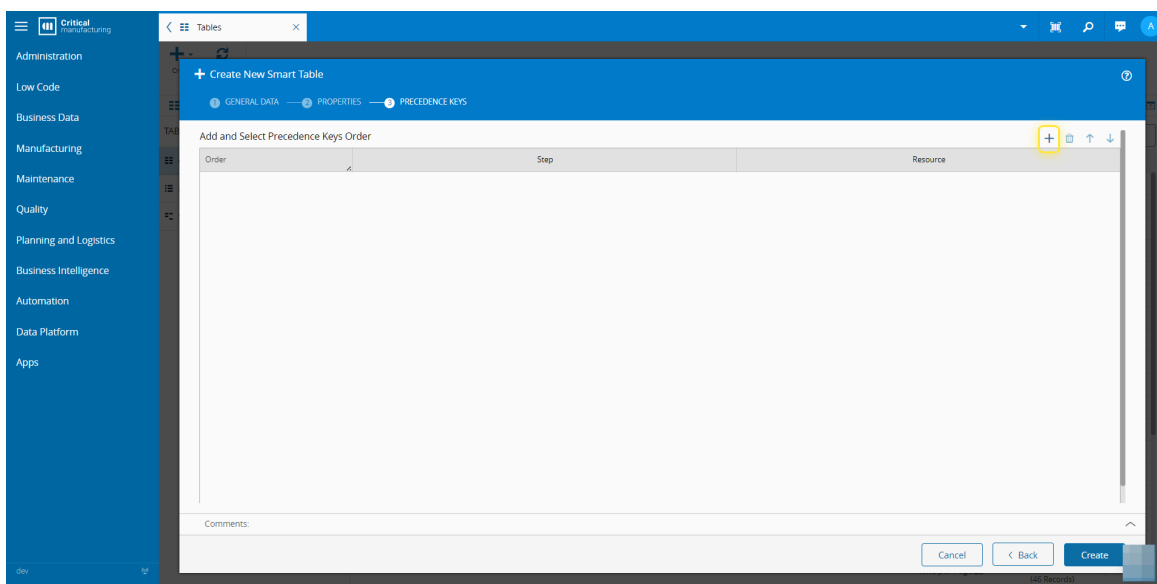


13. When finished, select the Next button.



14. Select the + icon to add Precedence Keys.

For more information, see [Smart Tables - Critical Manufacturing Documentation Portal](#)



15. Select Save and Generate to complete the operation.

The screenshot displays the 'Add and Select Precedence Keys Order' dialog box within the Critical Manufacturing 10.2 application. The interface includes a sidebar with navigation options such as Administration, Low Code, Business Data, Manufacturing, Maintenance, Quality, Planning and Logistics, Business Intelligence, Automation, Data Platform, and Apps. The main window shows a 'Tables' tab with a 'Create New Smart Table' button and three tabs: GENERAL DATA, PROPERTIES, and PRECEDENCE KEYS. The 'PRECEDENCE KEYS' tab is active, showing a table with the following data:

Order	Step	Resource
1	Step	Resource
2	Step	

At the bottom of the dialog, there is a 'Comments:' field and three buttons: 'Cancel', '< Back', and 'Save and Generate'.