

How to: Add an Instrument to a Resource

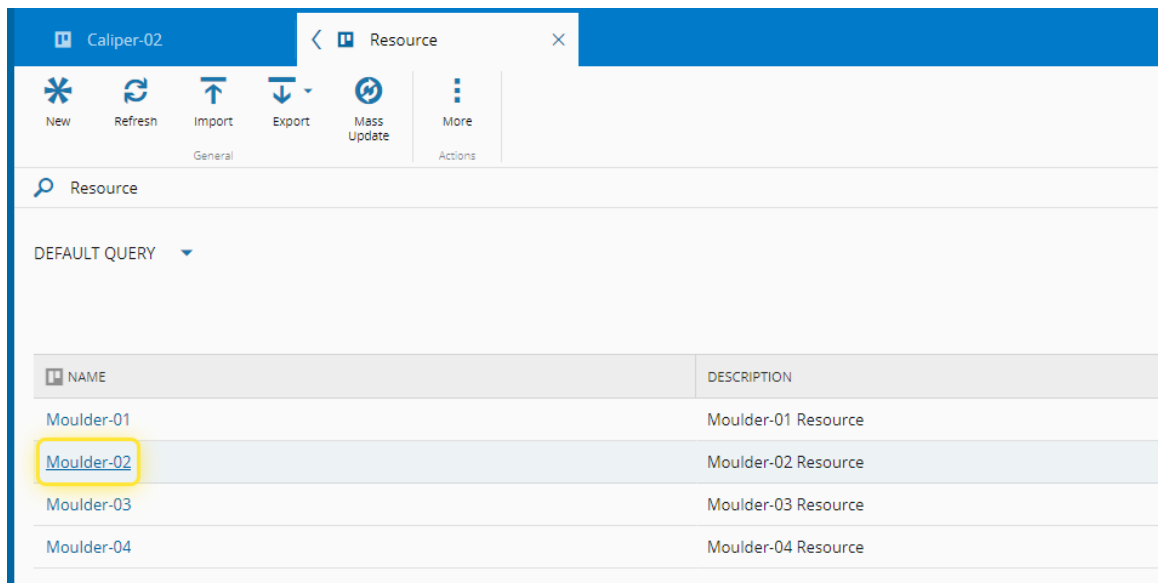
1. Go to the Business Data menu.



2. Select the Resource entity.

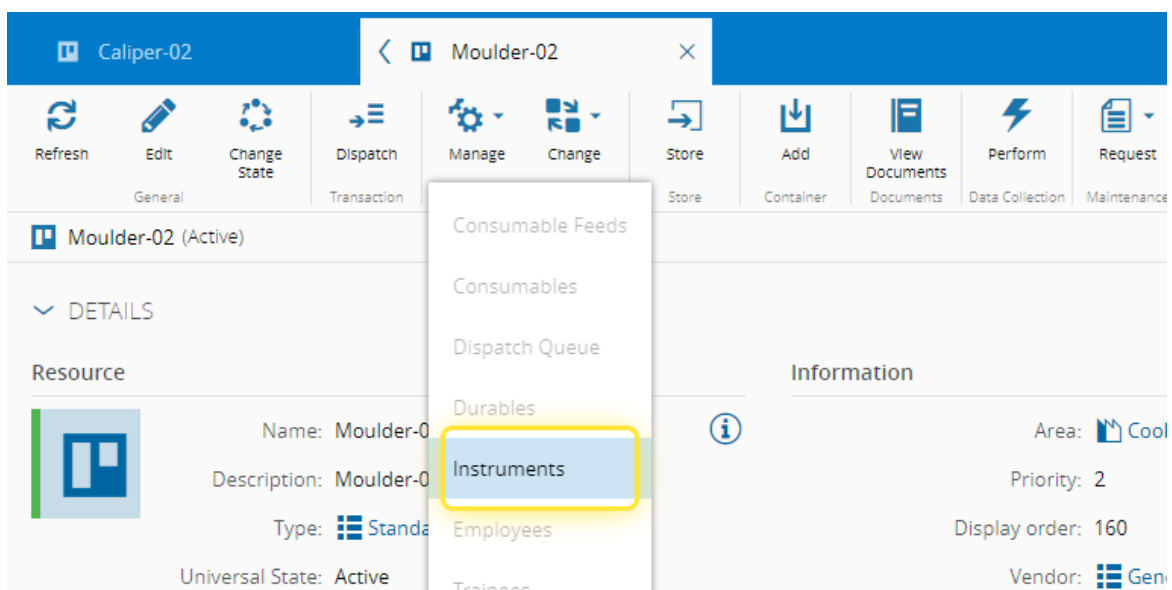


3. With the instrument already created, search and select the Resource.

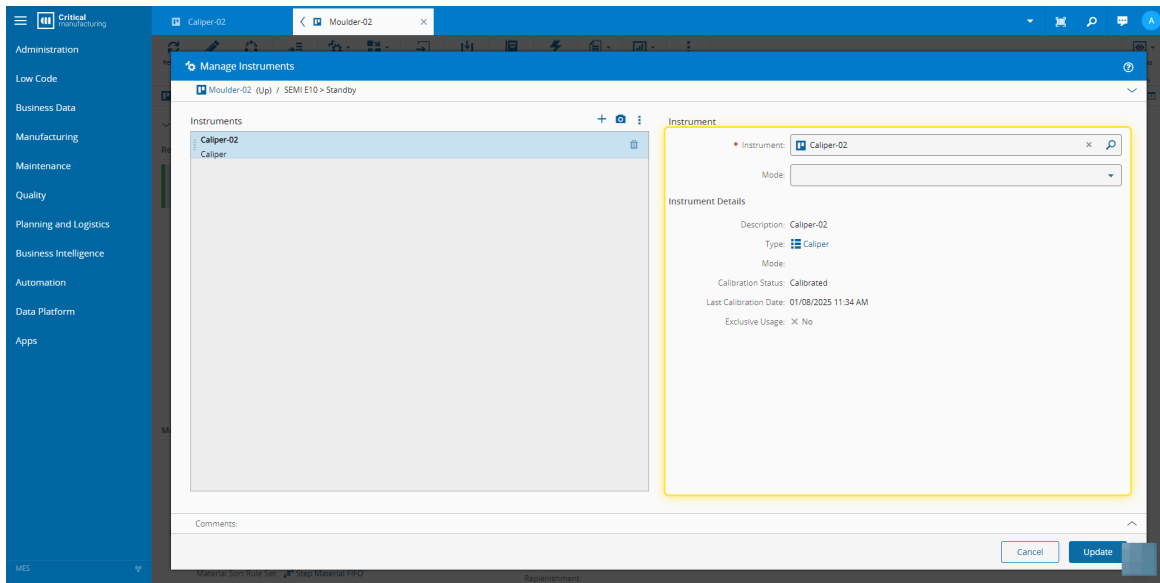


4. In the dropdown of the Manage button, select Instruments.

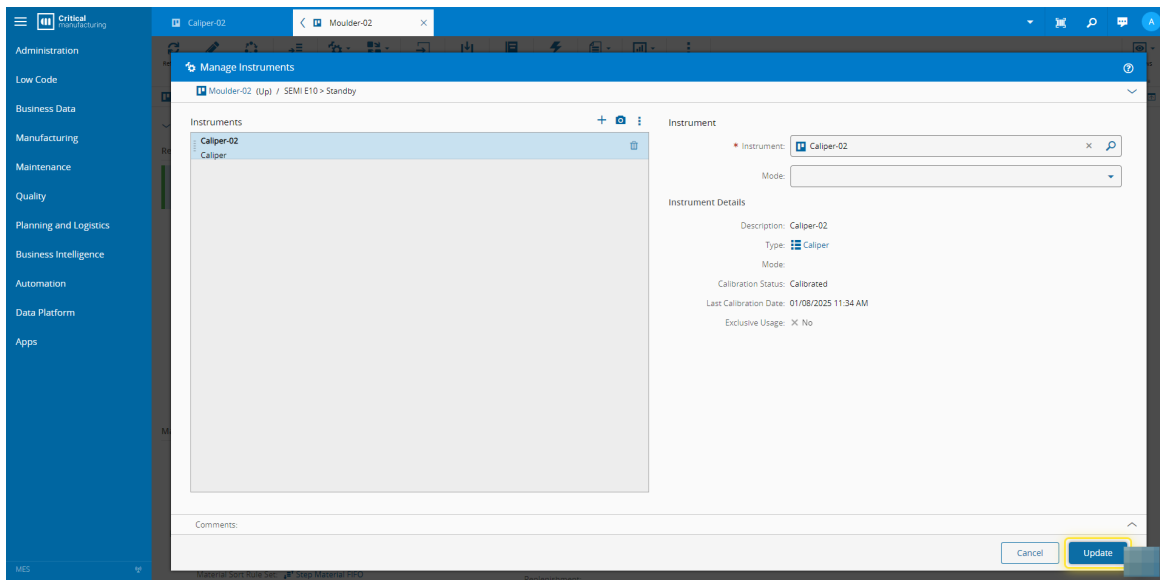
For more information, see [Manage Resource Instruments - Critical Manufacturing Documentation Portal](#)



5. Add the instrument and confirm the information.



6. Select the Update button.



7. Confirm the instrument has been added to the Resource.

Caliper-02 | Moulder-02

Administration | Low Code | Business Data | Manufacturing | Maintenance | Quality | Planning and Logistics | Business Intelligence | Automation | Data Platform | Apps

Refresh | Edit | Change state | Dispatch | Manage | Change | Store | Add | View documents | Perform | Request | View | More

General | Transaction | Resource | Store | Container | Documents | Data Collection | Maintenance | Dashboards | Actions

Moulder-02 (Active)

INSTRUMENTS

Refresh | Manage

Search

Instruments (1)

ORDER	INSTRUMENT	INSTRUMENT TYPE	INSTRUMENT MODE	CALIBRATION STATUS	LAST CALIBRATION DATE	EXCLUSIVE
1	Caliper-02	Caliper		Calibrated	01/08/2025 11:34 AM	X

Rows per Page: 25 | Page 1 of 1 (1 Records)

SERVICES

PERSONNEL

COSTING

DETAILS | STRUCTURE | RUNNING MODES | MATERIALS | INSTRUMENTS | SERVICES | PERSONNEL | COSTING | PROTOCOLS | NOTIFICATIONS | SCHEDULING / BATCHING | COLLECTED DATA | WORKGROUPS | ATTACHMENTS