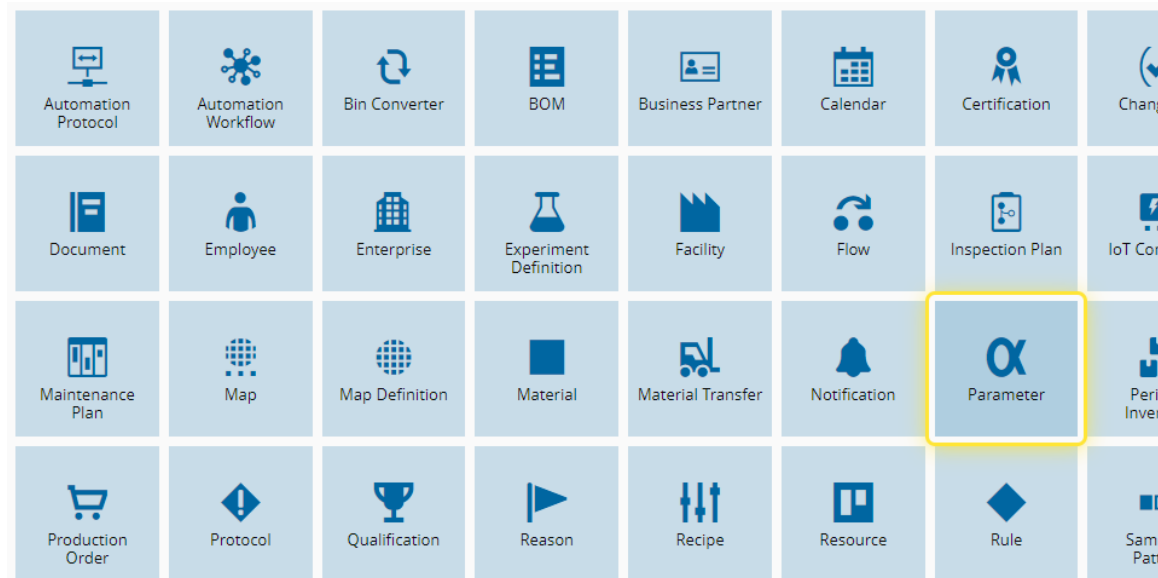


How to: Create a Parameter

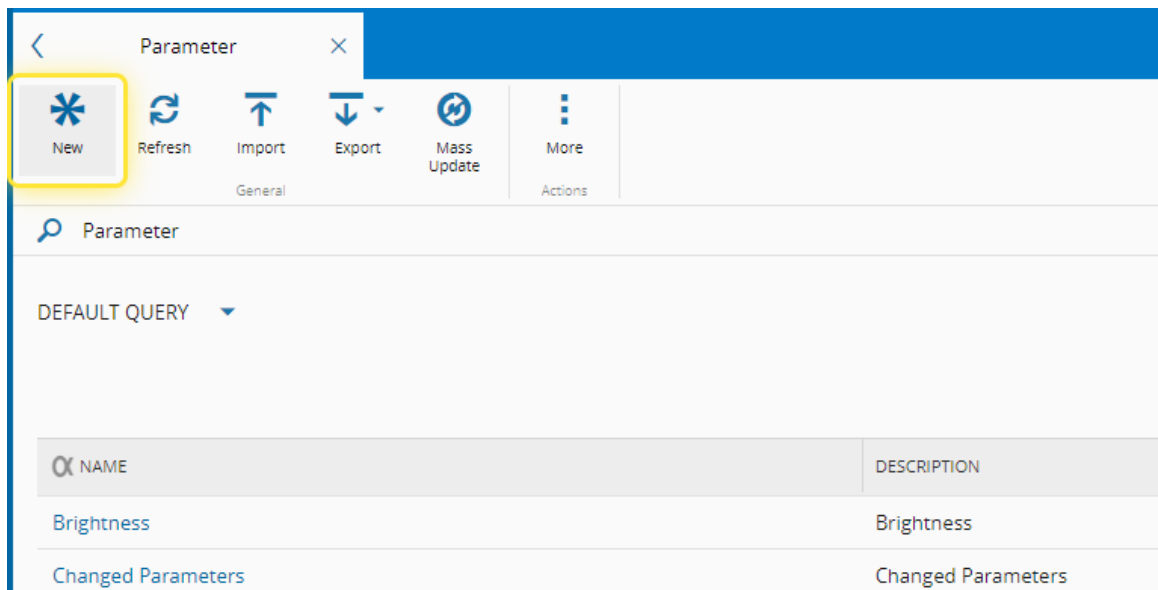
1. Go to the Business Data menu.



2. Select the Parameter entity.

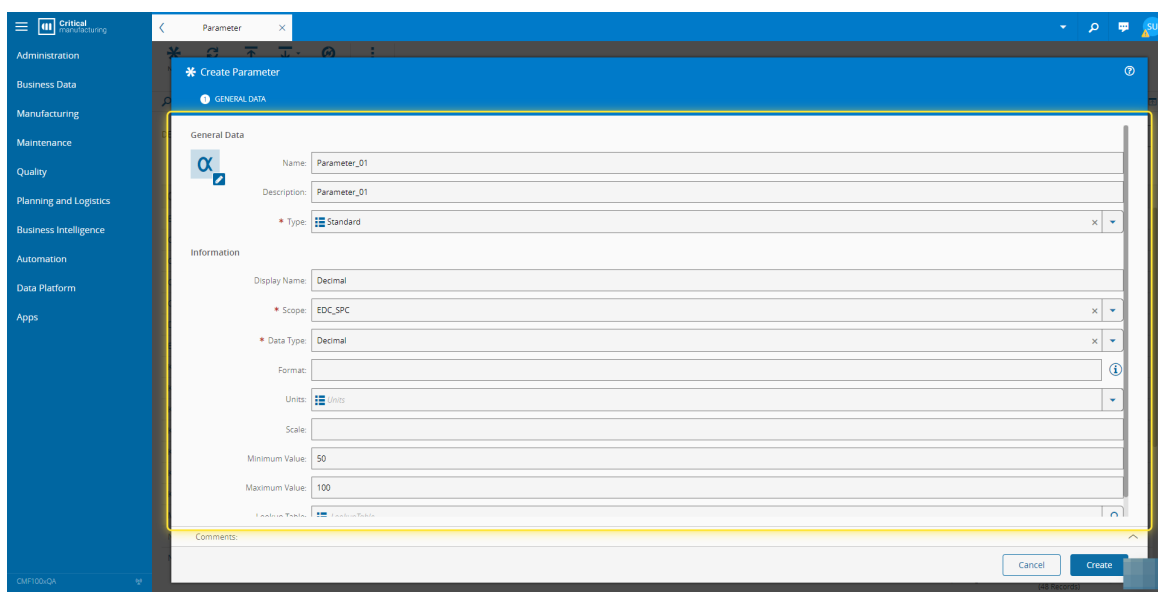


3. Select the New button.



4. Under the General Data tab, complete the necessary fields.

For more information, see [Create Parameter - Critical Manufacturing Documentation Portal](#)



5. Select the Create button

The screenshot shows the 'Create Parameter' dialog box in the Critical Manufacturing 10.2 application. The dialog is titled 'Create Parameter' and has a 'GENERAL DATA' tab selected. The fields are as follows:

Field	Value
Name	Parameter_01
Description	Parameter_01
Type	Standard
Display Name	Decimal
Scope	EDC_SPC
Data Type	Decimal
Format	
Units	Units
Scale	
Minimum Value	50
Maximum Value	100
Comments	

The 'Create' button is highlighted with a yellow box.