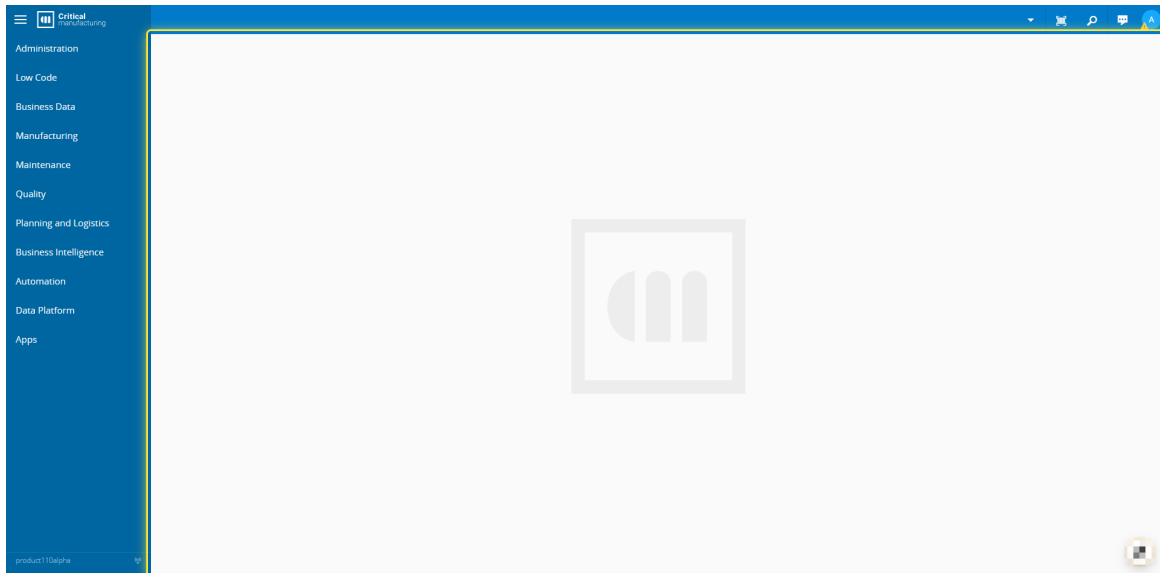


How to Associate an MP with an Entity

1. Open MES and go to the home page.

Open MES and go to the **home page**.



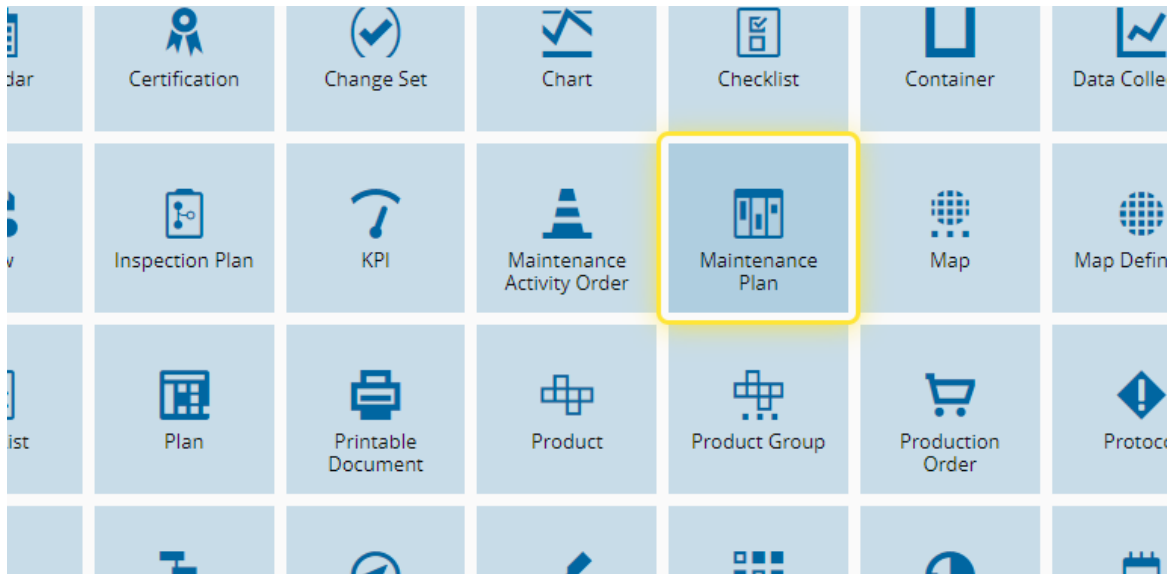
2. Business Data

From the menu, select the option **Business Data** .



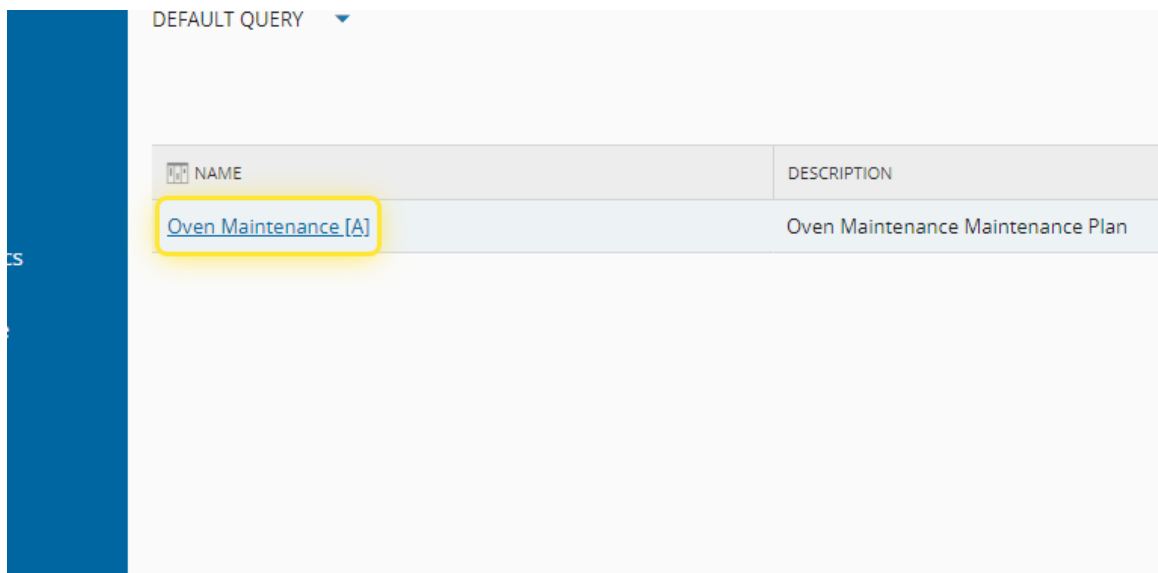
3. Maintenance Plan

From the tiles with all the options available, select **Maintenance Plan**



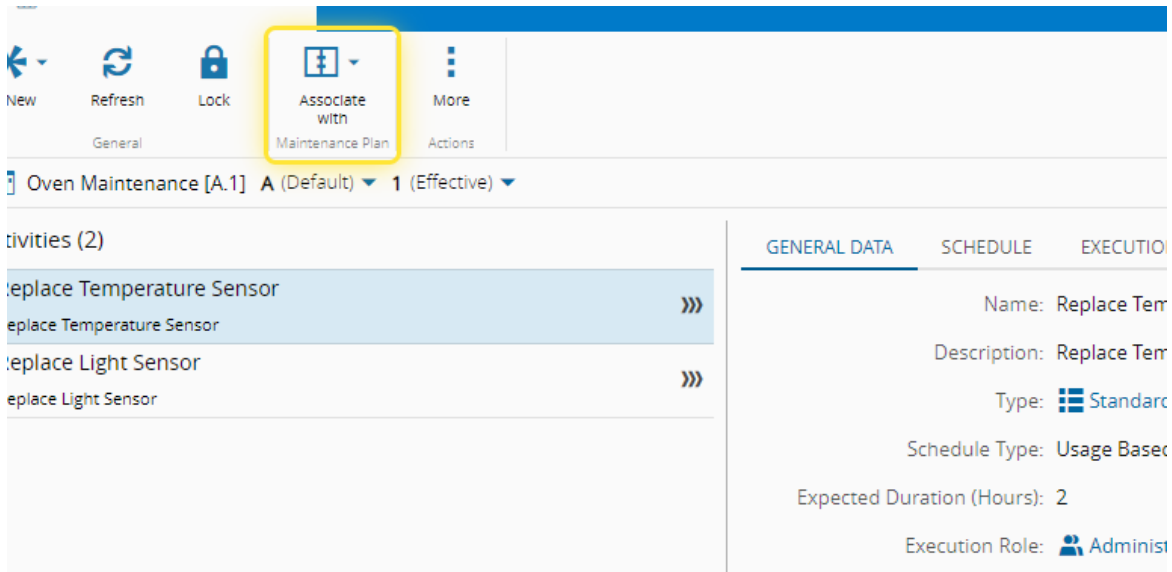
4. Select an available Maintenance Plan

Review the list of available **Maintenance Plans** and select the one you would like to modify.



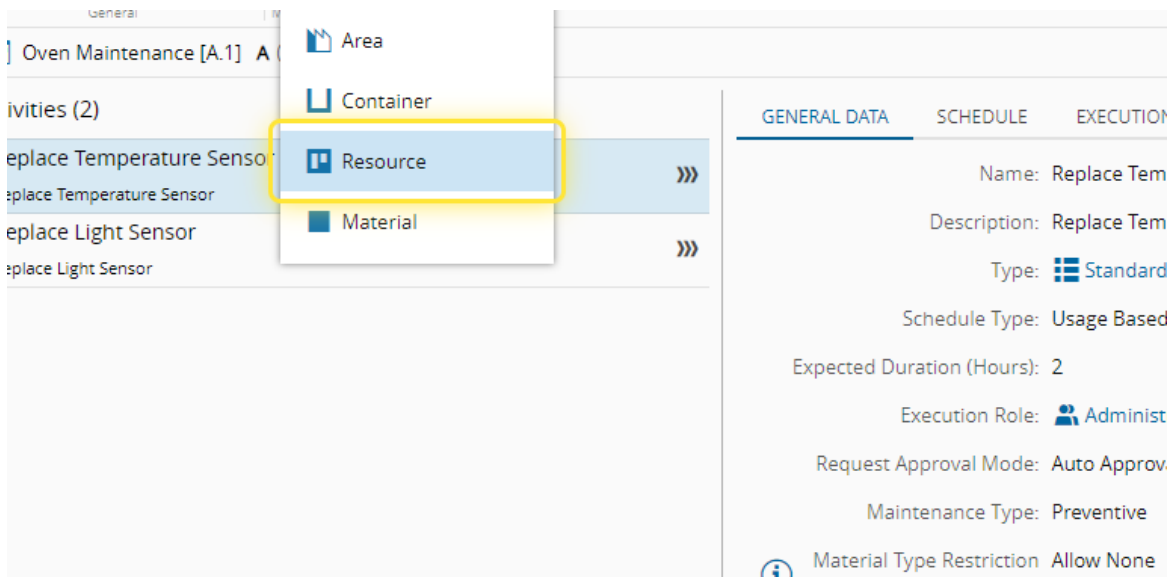
5. Associate with

Next, locate and select on the **Associate With** option to proceed.



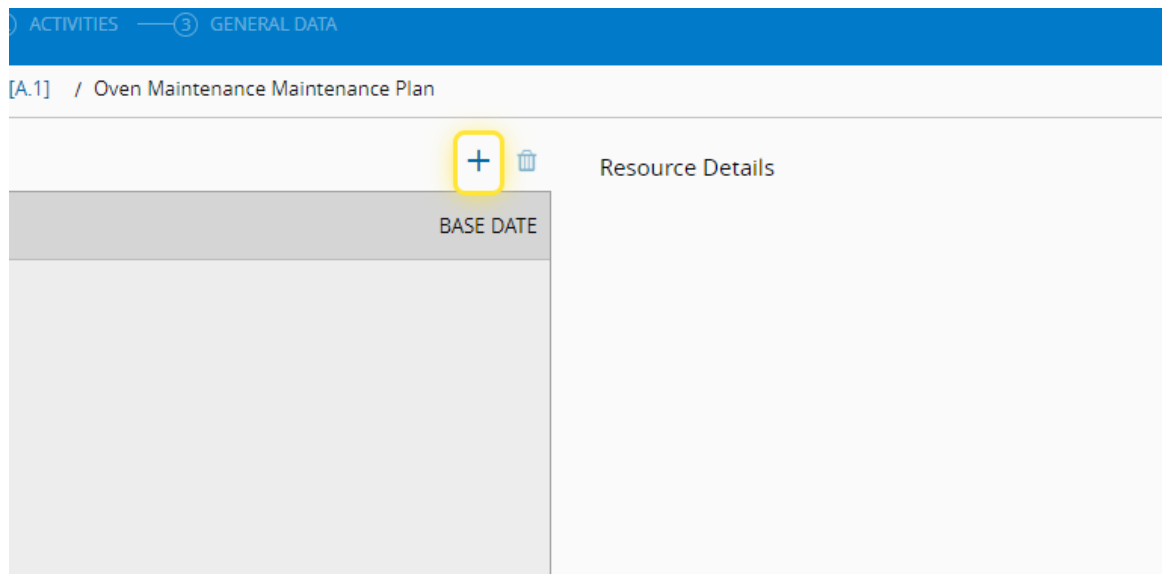
6. Select entity type

From the dropdown list, select the **Entity** to associate to the **Maintenance Plan**.



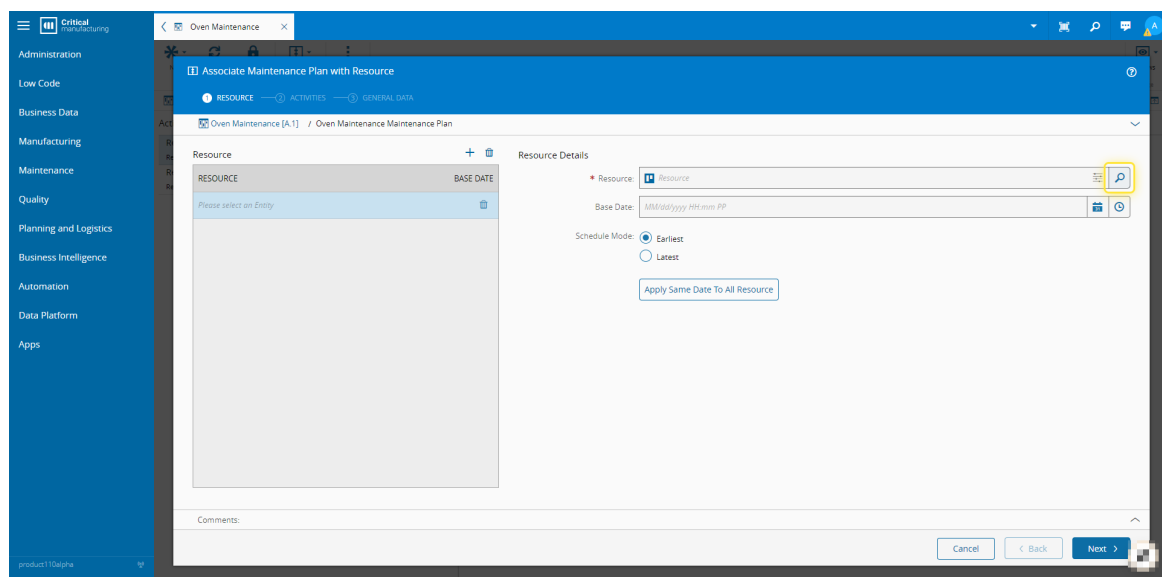
7. Select on highlight

After associating the Entity, look for a "+" button.



8. Associate object to Entity

Search for the specific entity to associate with this **Maintenance Plan** .
Follow the onscreen instructions.



9. Maintenance Plan Instance created.

The outcome of this process is the creation of a maintenance plan instance, where the specific maintenance plan is linked to the respective entity. Once this is done, you'll be able to implement and carry out the maintenance plan.

