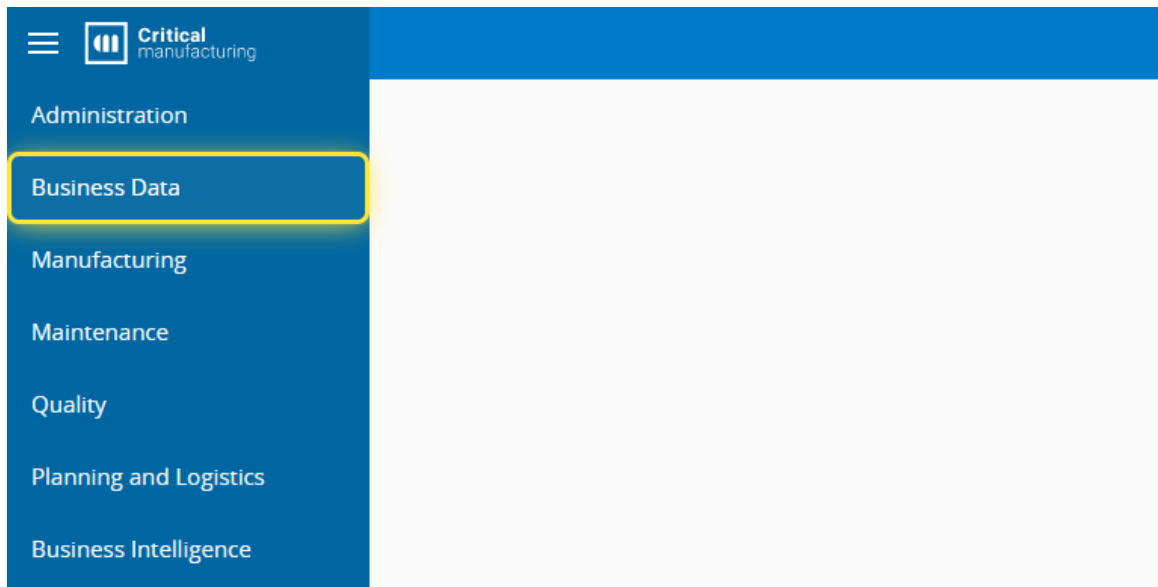
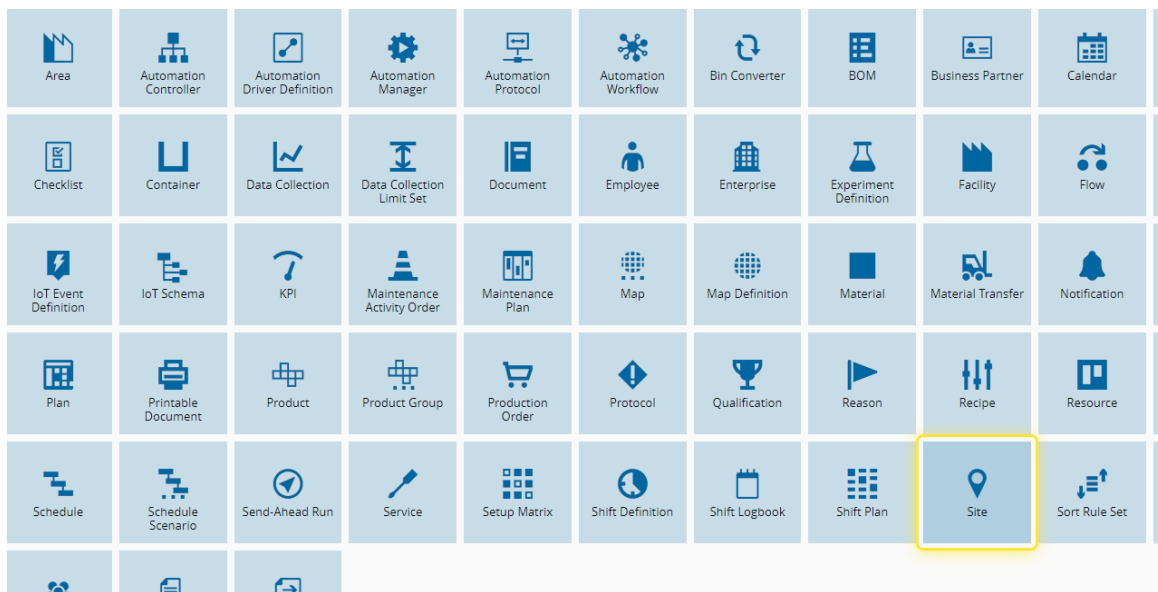


How to: Create a Site

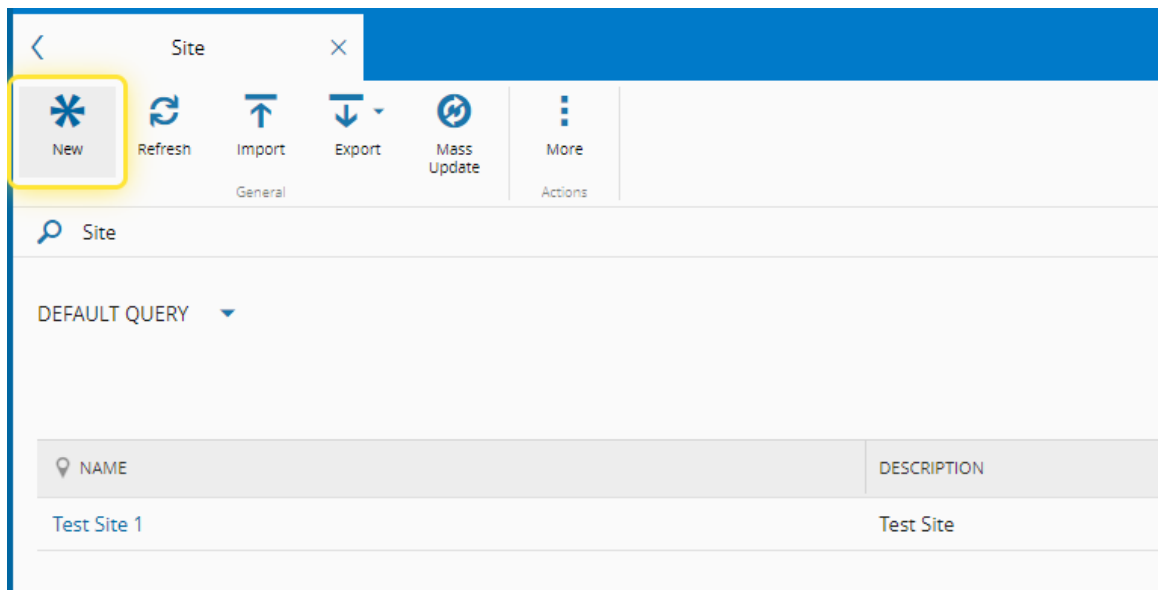
1. Go to the Business Data menu.



2. Select the Site entity.

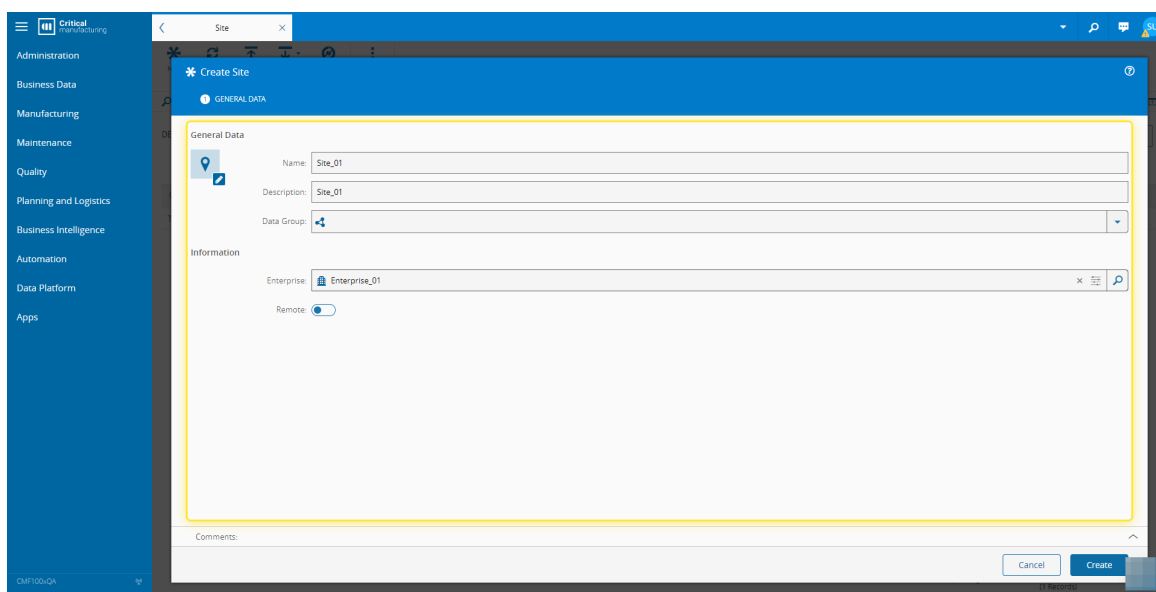


3. Select the New button.

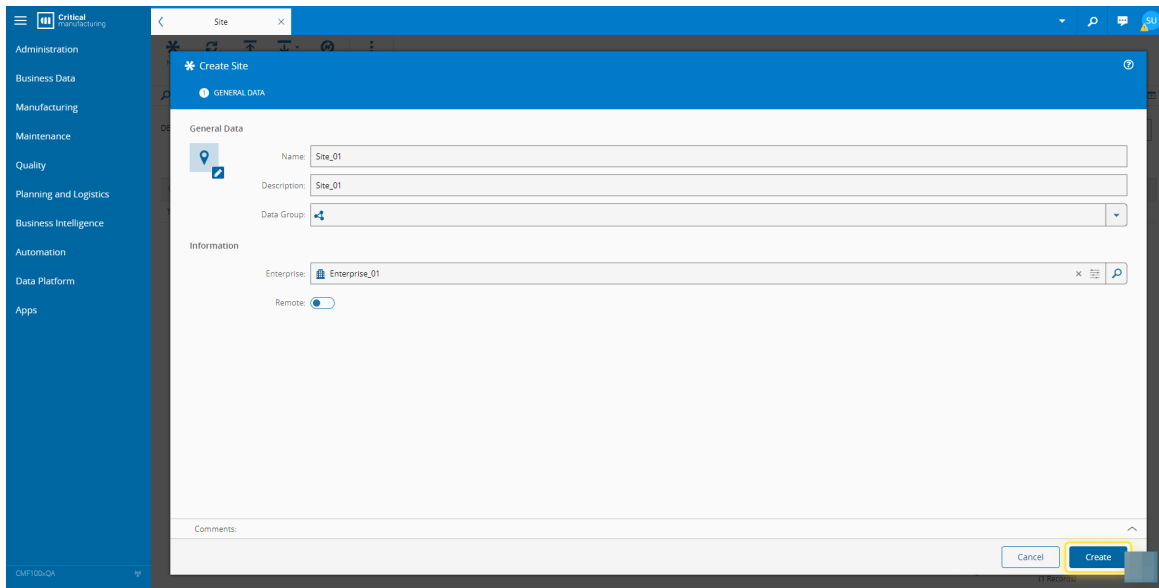


4. Under the General Data tab, complete the necessary fields.

For more information, see [Create Site - Critical Manufacturing Documentation Portal](#)



5. Select the Create button.



Create Site

GENERAL DATA

General Data

Name: Site_01

Description: Site_01

Data Group: [Dropdown]

Information

Enterprise: Enterprise_01

Remote:

Comments:

Cancel Create