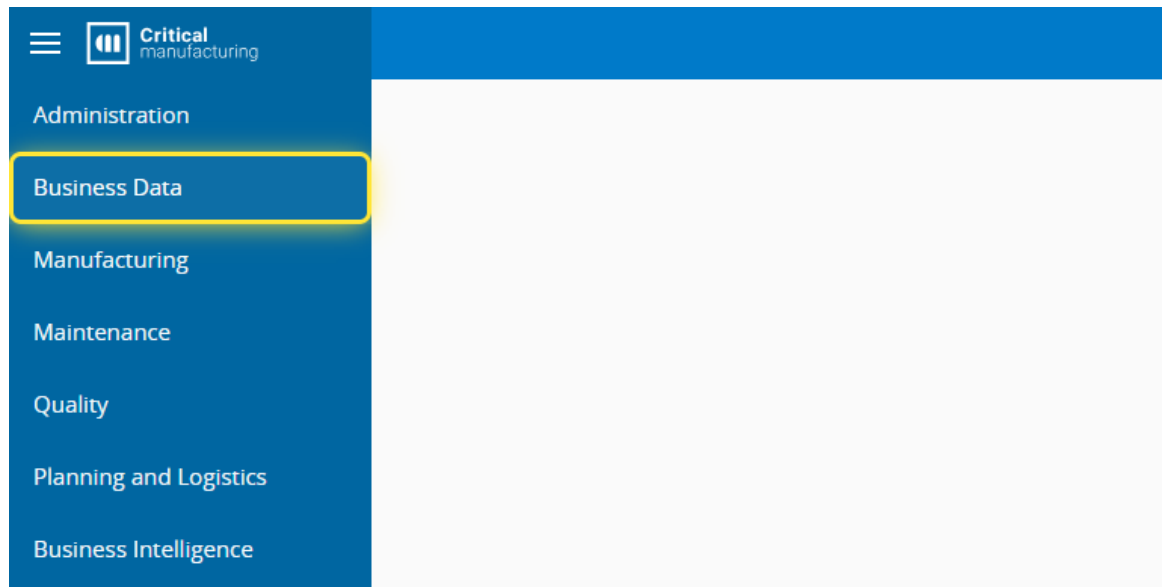
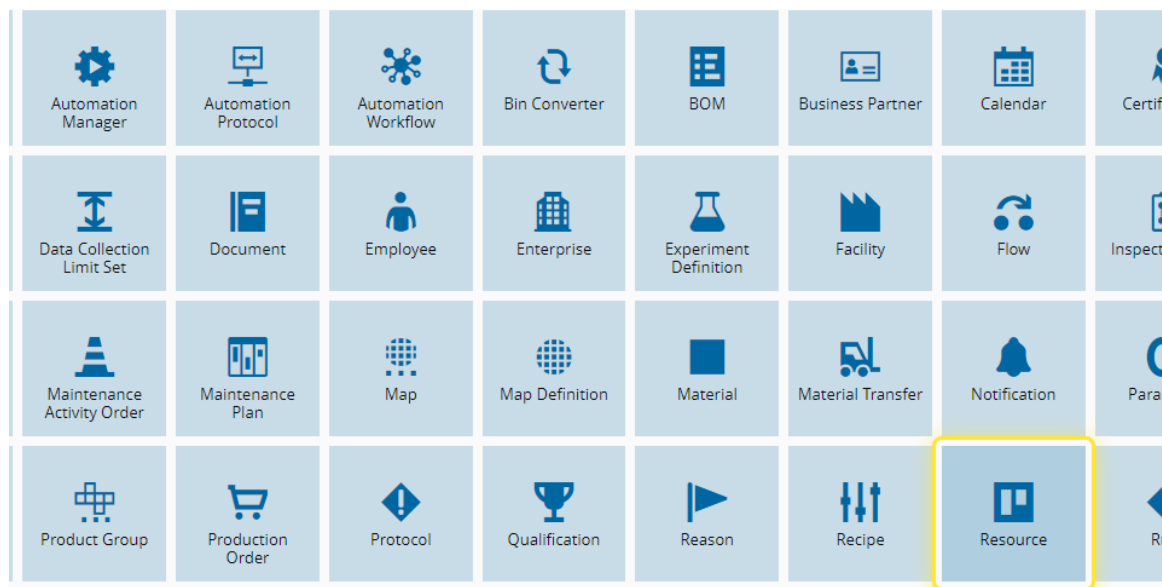


How to: Associate a Service to a Resource

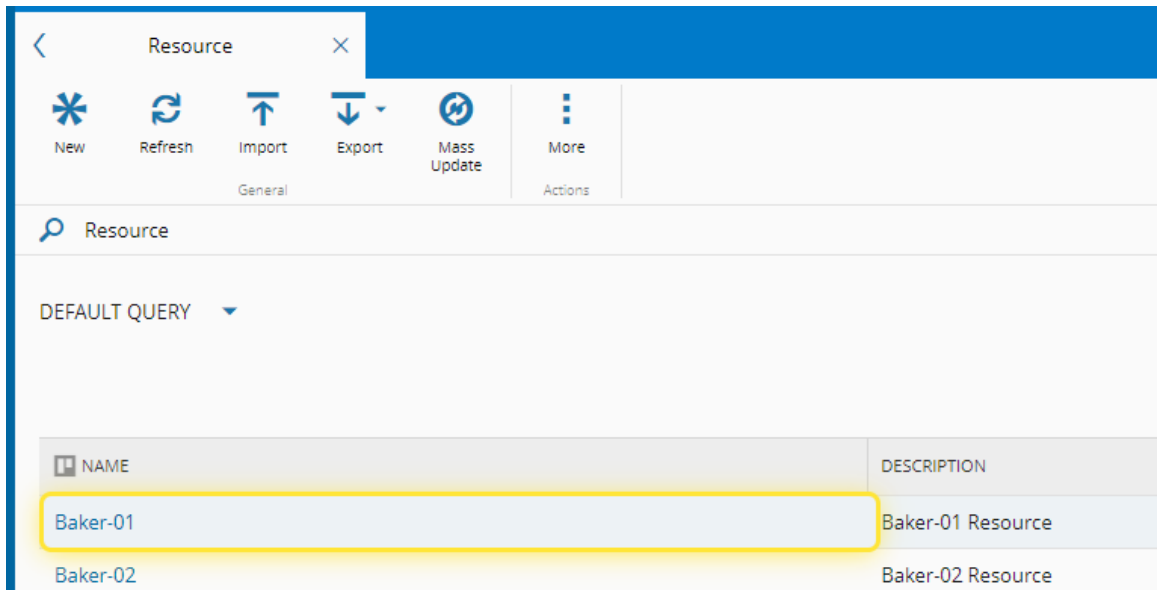
1. Select Business Data



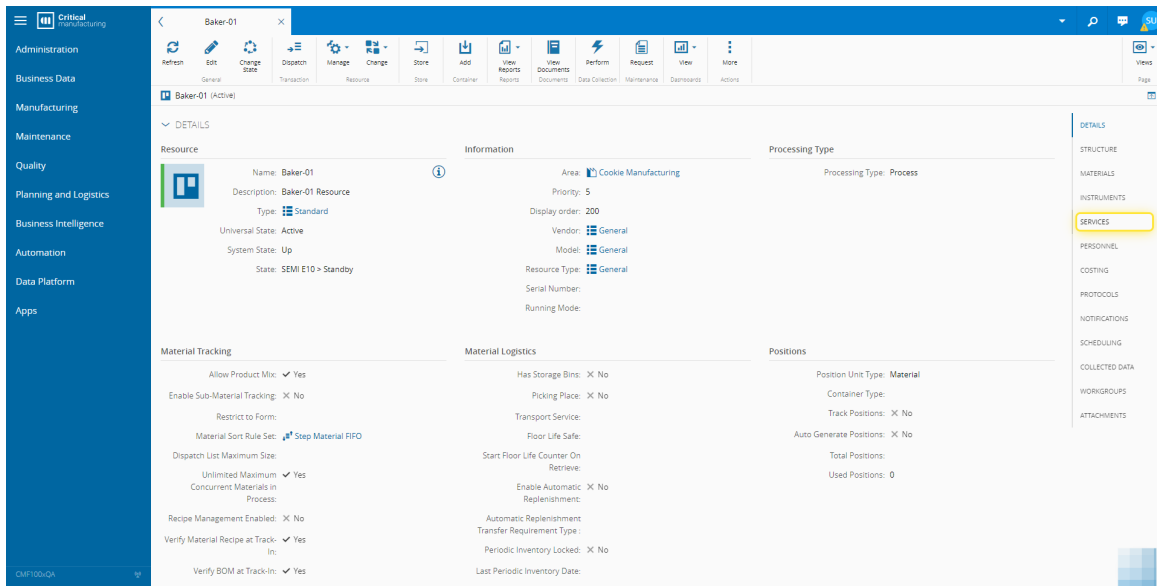
2. Select the Resource entity.



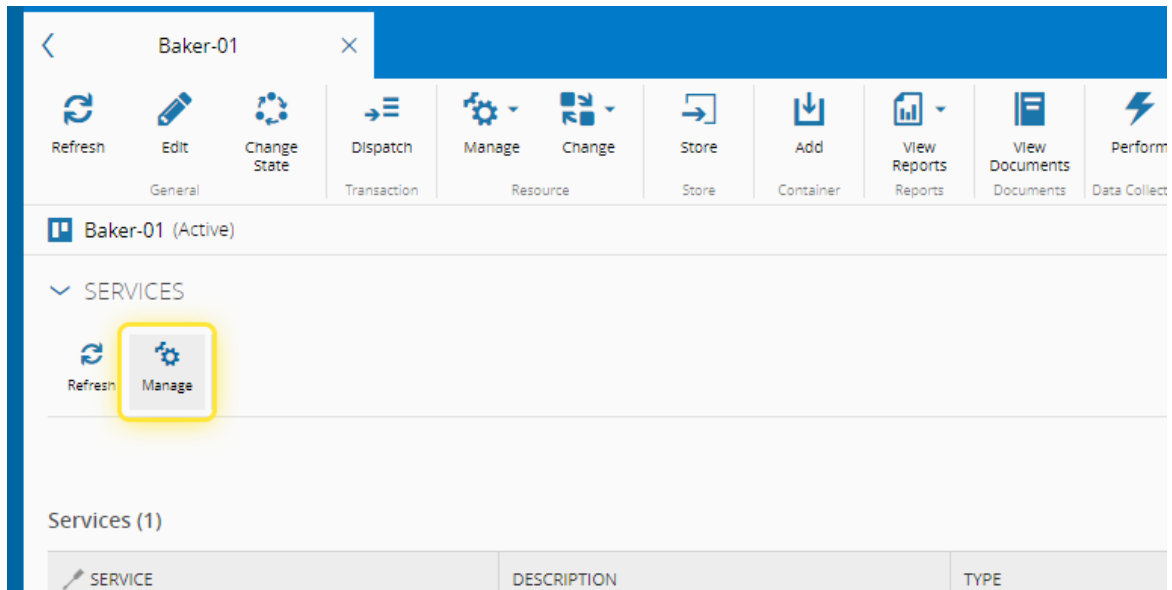
3. Select the Resource.



4. Select the Services section.

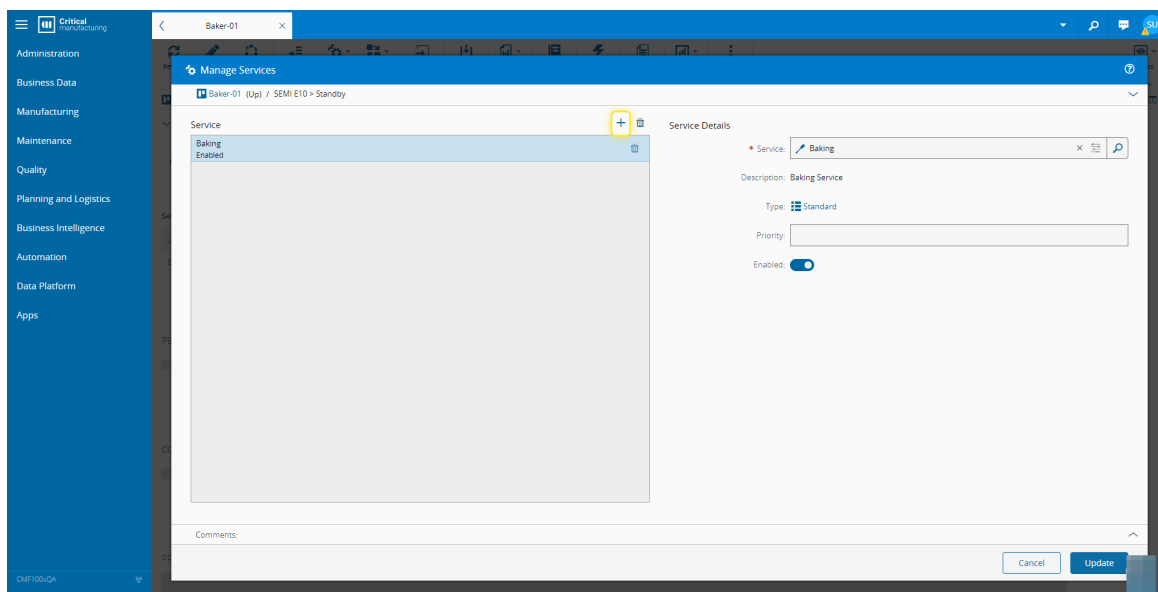


5. Select Manage.



6. In the Manage Services wizard select Add.

For more information, see [Manage Services - Critical Manufacturing Documentation Portal](#)



7. Search for and add the Service. Select the Update button.

