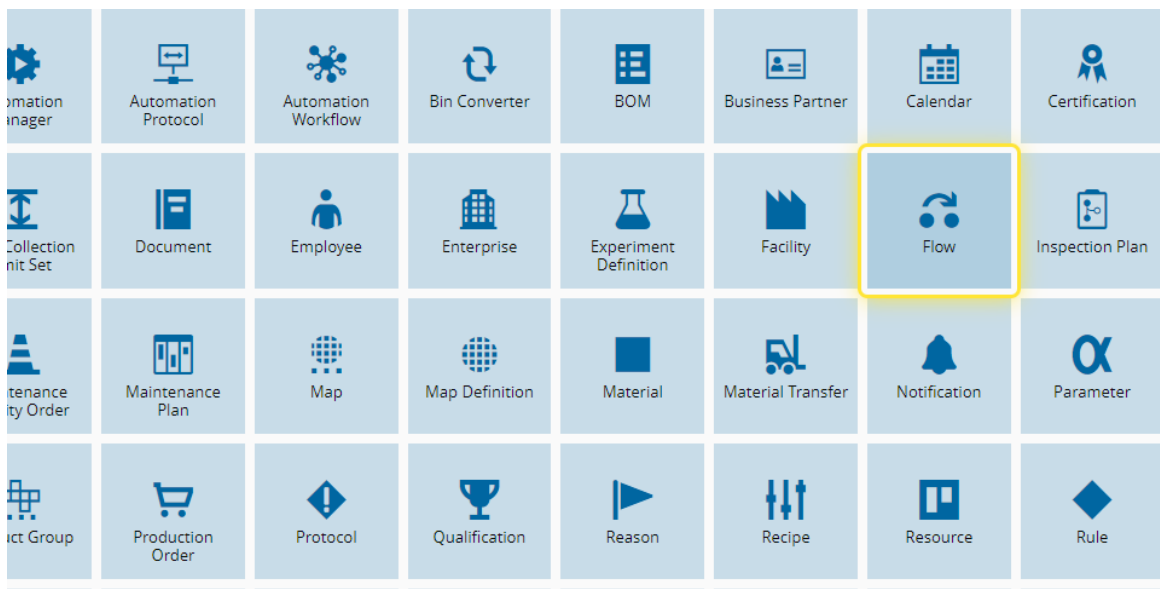


# How to: Manage an Off-Flow

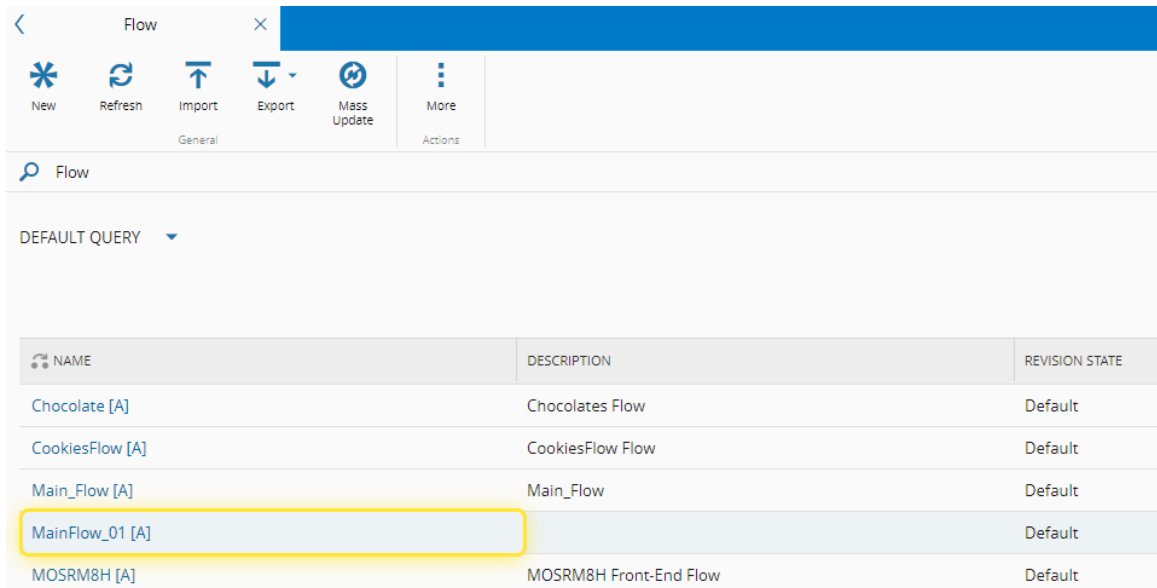
1. Go to the Business Data menu.



2. Select the Flow entity.



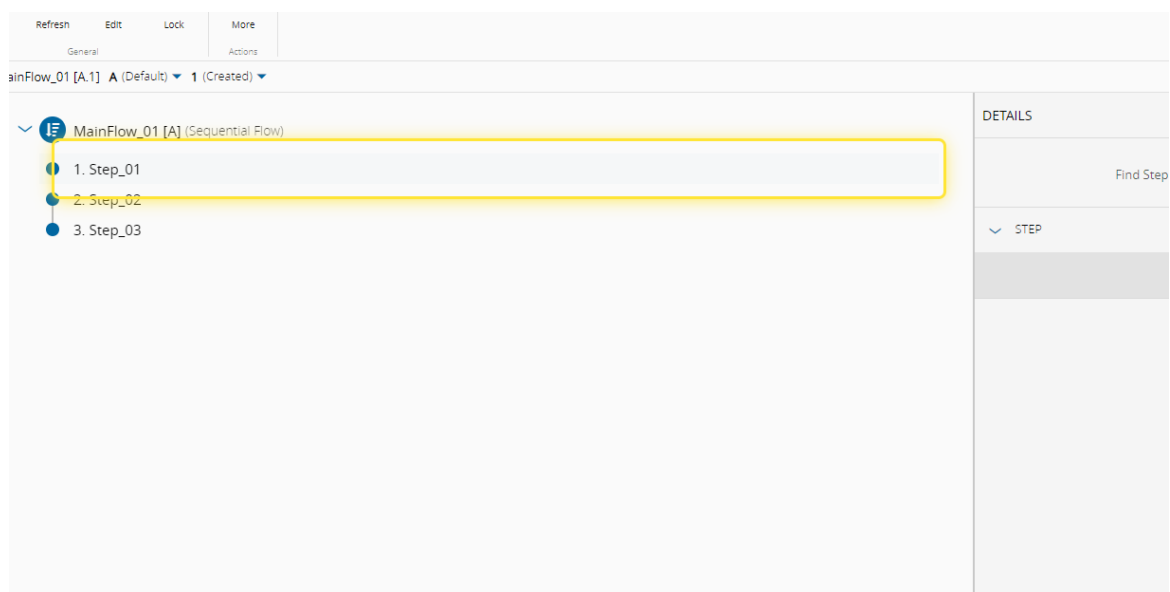
3. Select the Flow you want to use.



NAME	DESCRIPTION	REVISION STATE
Chocolate [A]	Chocolates Flow	Default
CookiesFlow [A]	CookiesFlow Flow	Default
Main_Flow [A]	Main_Flow	Default
MainFlow_01 [A]		Default
MOSRM8H [A]	MOSRM8H Front-End Flow	Default

4. Select the Step for Rework.

For more information, see [Create Flow - Critical Manufacturing Documentation Portal](#)



Refresh Edit Lock More  
General Actions

ainFlow\_01 [A.1] A (Default) 1 (Created)

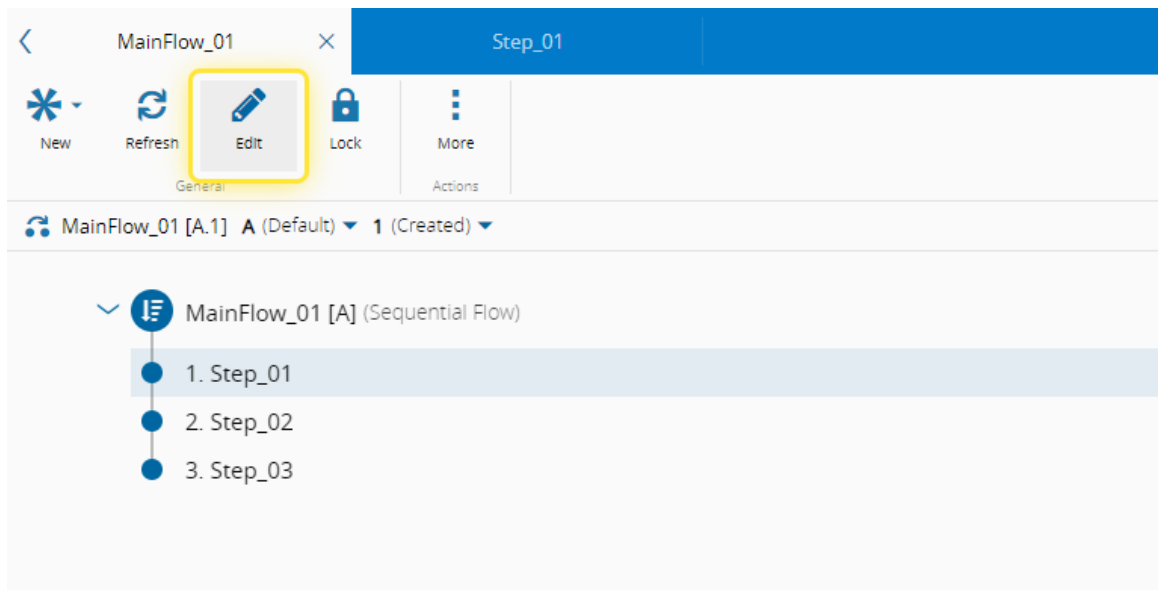
- MainFlow\_01 [A] (Sequential Flow)
  - 1. Step\_01
  - 2. Step\_02
  - 3. Step\_03

DETAILS

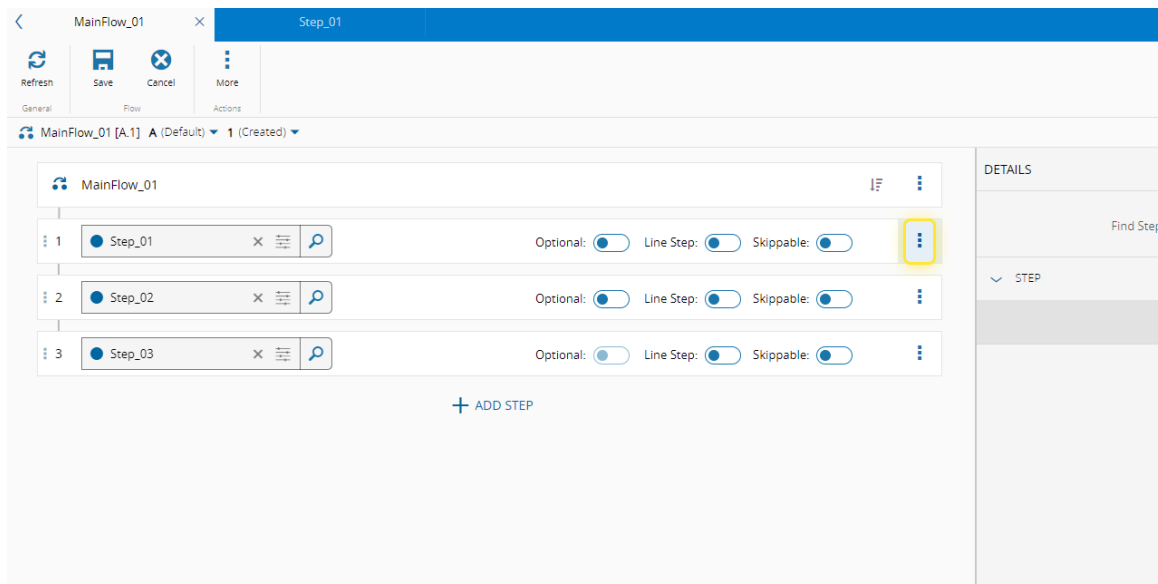
Find Step

STEP

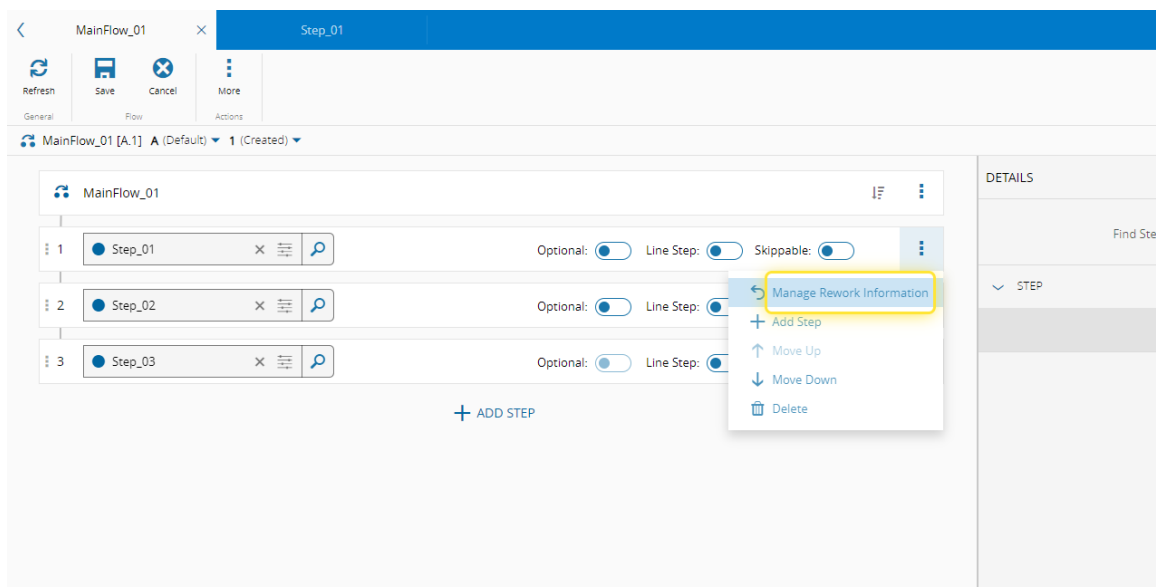
5. Select the Edit button.



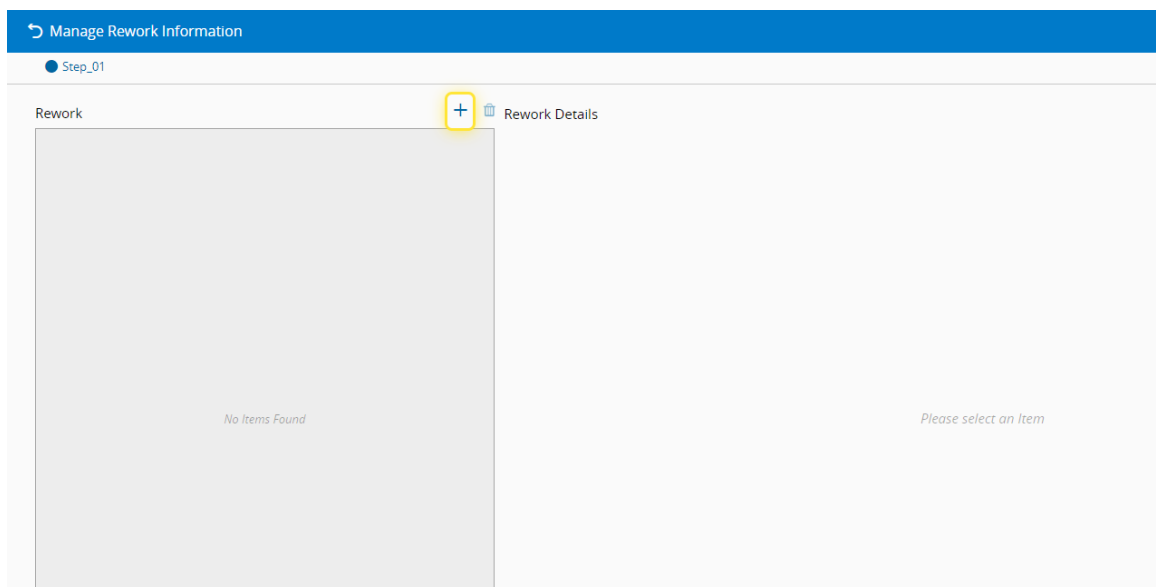
6. Select the More action.



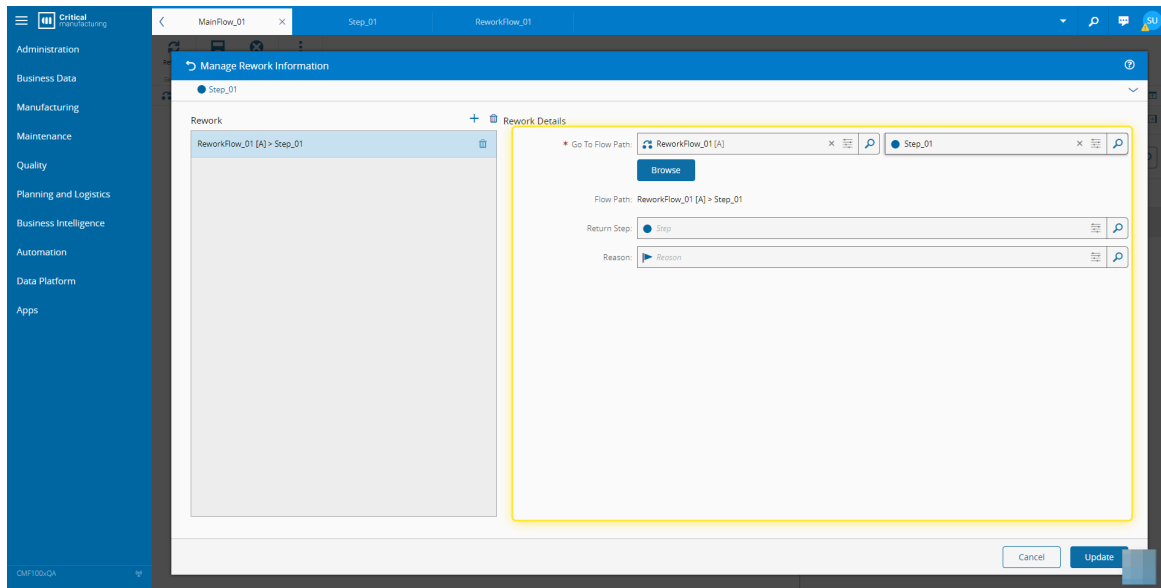
7. Select the Manage Rework Information option.



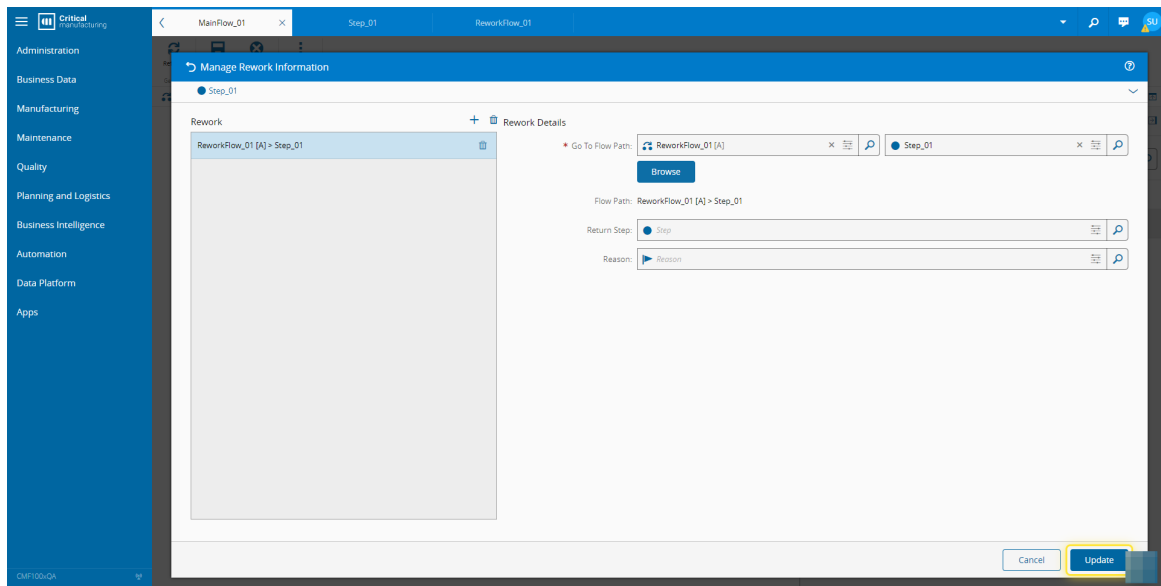
8. Select + to add Rework path to the Step.



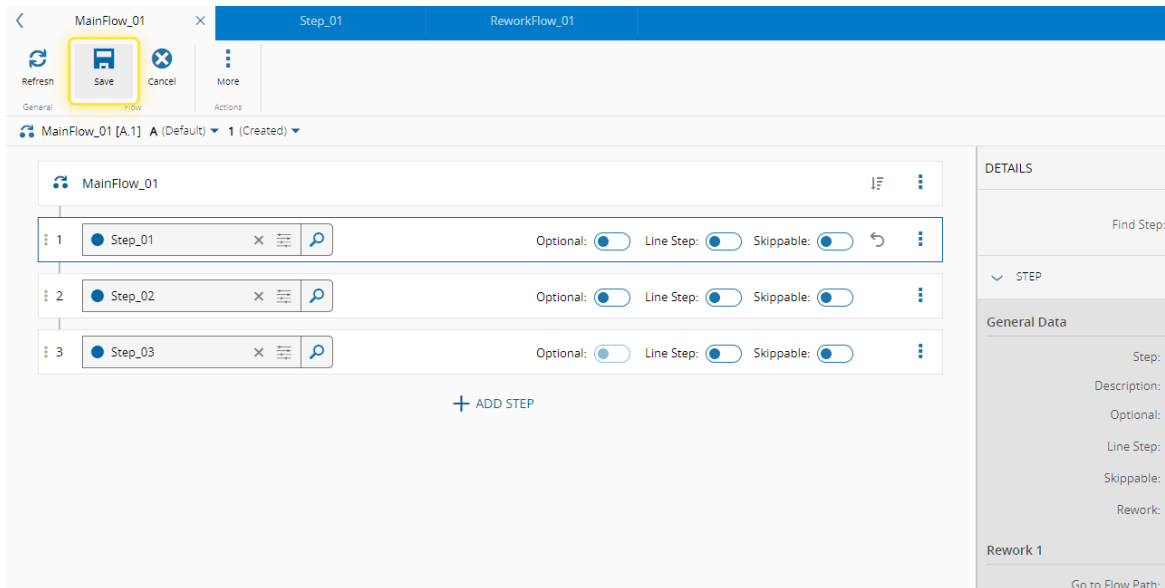
9. Complete the necessary fields.



10. Select the Update button.



11. Select Save to update the Flow.



MainFlow\_01

Step\_01 ReworkFlow\_01

Refresh Save Cancel More

MainFlow\_01 [A.1] (Default) 1 (Created)

MainFlow\_01

1 Step\_01 Optional: Line Step: Skippable:

2 Step\_02 Optional: Line Step: Skippable:

3 Step\_03 Optional: Line Step: Skippable:

+ ADD STEP

DETAILS

Find Step:

STEP

General Data

Step:

Description:

Optional:

Line Step:

Skippable:

Rework:

Rework 1

Go to Flow Path: