



**Critical**  
manufacturing  
an ASM PT company

# How to: Add Value to Smart Table

11.0

March 2026

## DOCUMENT ACCESS

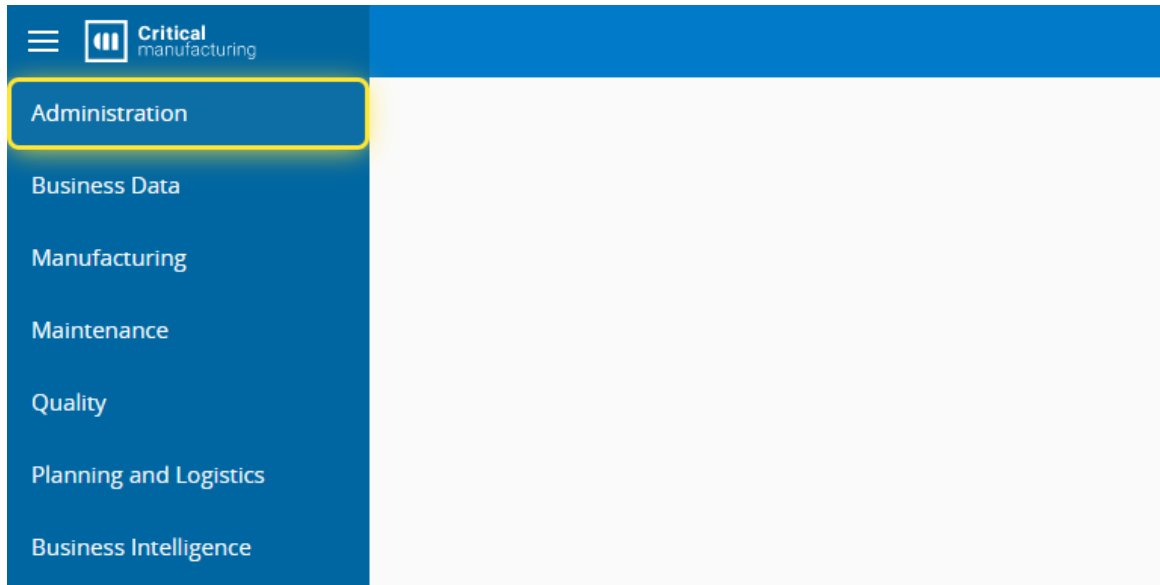
Public

## DISCLAIMER

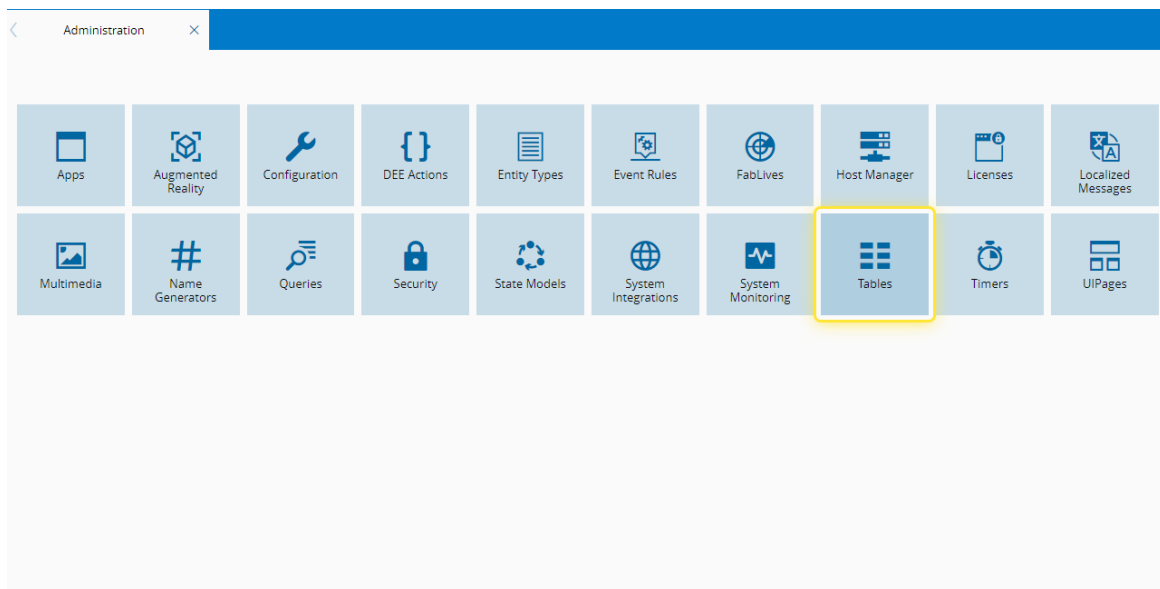
The contents of this document are under copyright of Critical Manufacturing S.A. it is released on condition that it shall not be copied in whole, in part or otherwise reproduced (whether by photographic, or any other method) and the contents therefore shall not be divulged to any person other than that of the addressee (save to other authorized offices of his organization having need to know such contents, for the purpose for which disclosure is made) without prior written consent of submitting company.

## How to: Add Value to Smart Table

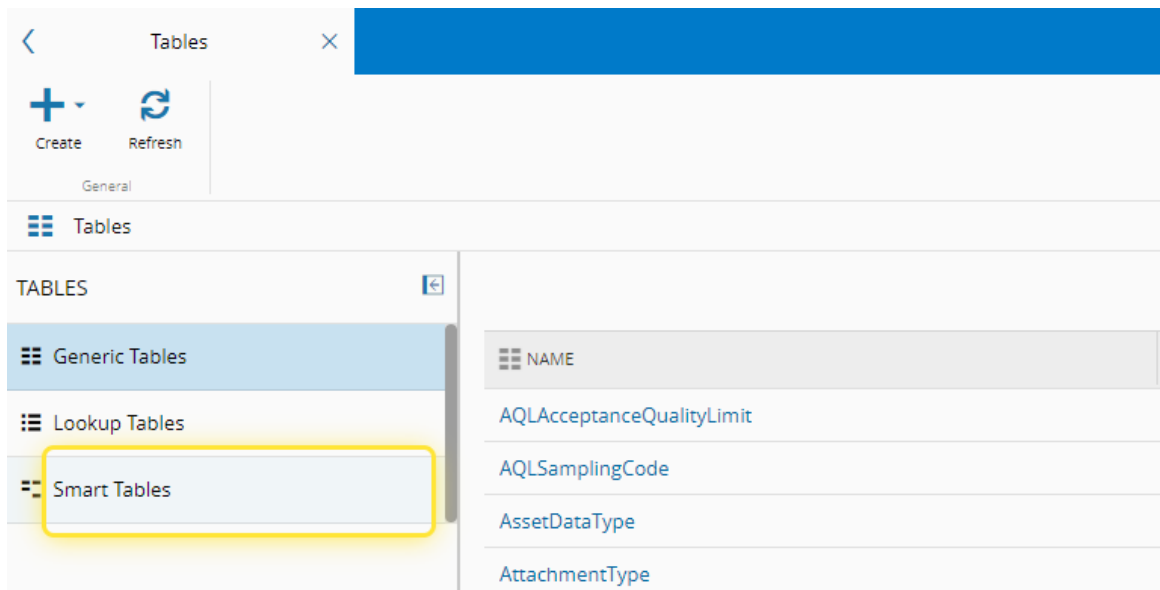
1. Go to the Administration menu.



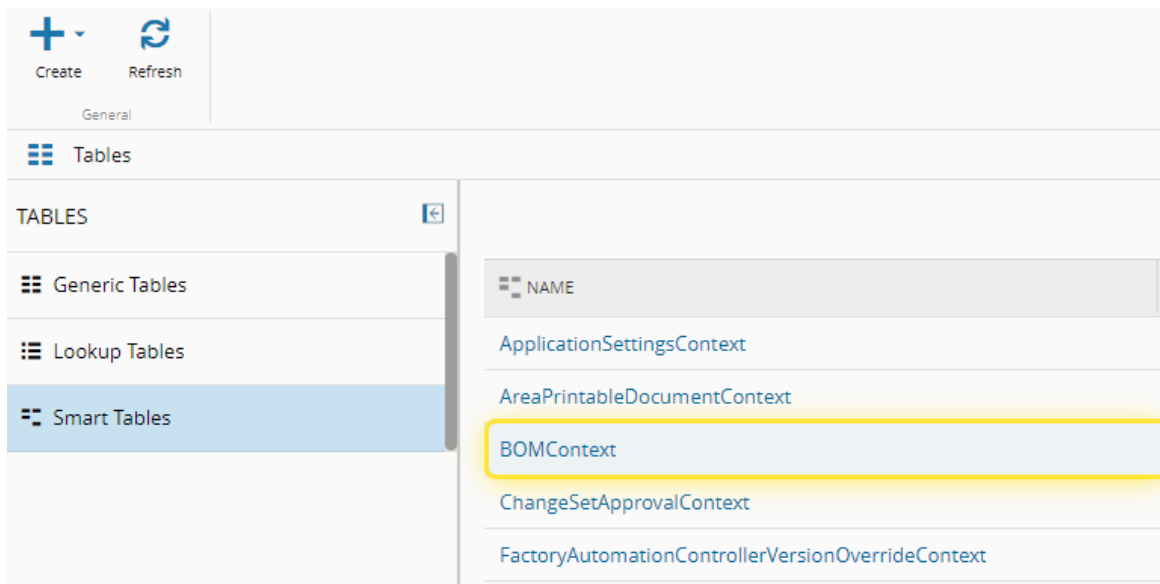
2. Select the Tables tile.



3. Select the Smart Tables option.

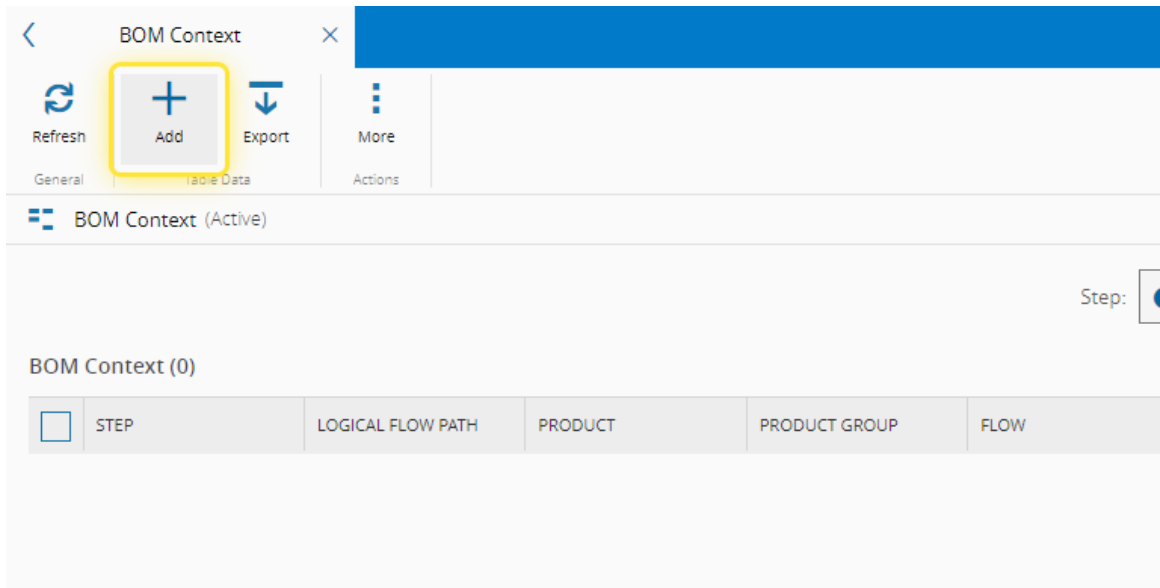


4. Select the Name of the Smart Table you need.

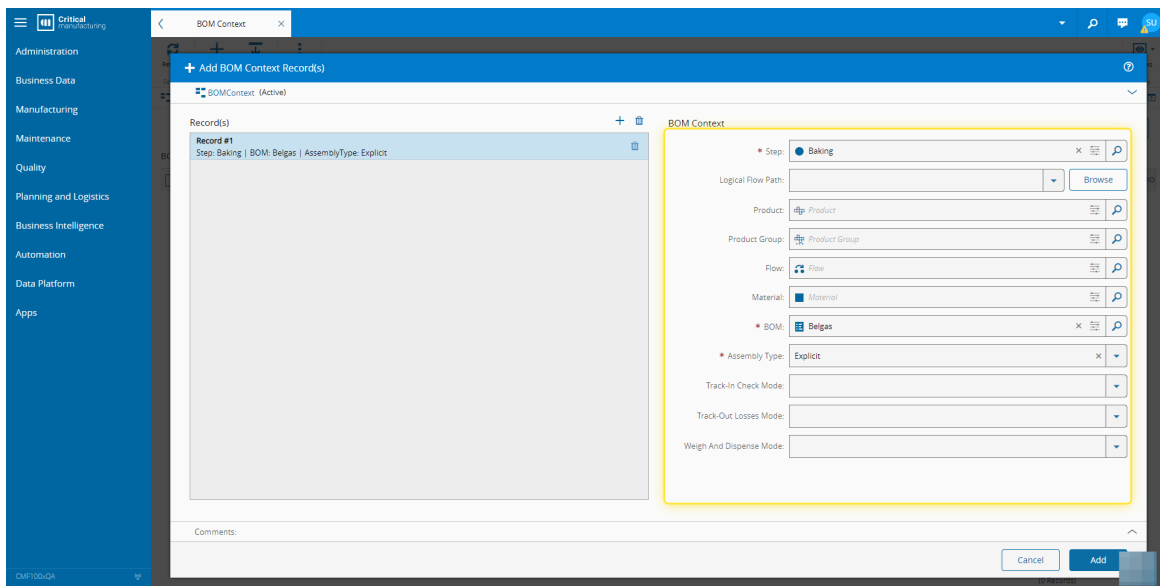


5. Select the Add button.

For more information, see [Smart Tables - Critical Manufacturing Documentation Portal](#)



6. Complete the necessary fields.



7. Select the Add button.

The screenshot displays the 'Add BOM Context Records' window in the Critical Manufacturing 11.0 interface. On the left, a navigation sidebar lists various system areas. The main window title is 'BOM Context'. The central area features a table with one record: 'Record #1' with details 'Step: Baking | BOM: Belgas | AssemblyType: Explicit'. To the right of the table is a 'BOM Context' form with several fields: 'Step' (radio button selected for 'Baking'), 'Logical Flow Path' (with a 'Browse' button), 'Product' (with a search icon), 'Product Group' (with a search icon), 'Flow' (with a search icon), 'Material' (with a search icon), 'BOM' (radio button selected for 'Belgas'), and 'Assembly Type' (dropdown menu set to 'Explicit'). Below these are three dropdown menus: 'Track-In Check Mode', 'Track-Out Losses Mode', and 'Weigh And Dispense Mode'. At the bottom right, there are 'Cancel' and 'Add' buttons, with the 'Add' button highlighted by a yellow box.



# Legal Information

## **Disclaimer**

The information contained in this document represents the current view of Critical Manufacturing on the issues discussed as of the date of publication. Because Critical Manufacturing must respond to changing market conditions, it should not be interpreted to be a commitment on the part of Critical Manufacturing, and Critical Manufacturing cannot guarantee the accuracy of any information presented after the date of publication. This document is for informational purposes only.

Critical Manufacturing makes no warranties, express, implied or statutory, as to the information herein contained.

## **Confidentiality Notice**

All materials and information included herein are being provided by Critical Manufacturing to its Customer solely for Customer internal use for its business purposes. Critical Manufacturing retains all rights, titles, interests in and copyrights to the materials and information herein. The materials and information contained herein constitute confidential information of Critical Manufacturing and the Customer must not disclose or transfer by any means any of these materials or information, whether total or partial, to any third party without the prior explicit consent by Critical Manufacturing.

## **Copyright Information**

All title and copyrights in and to the Software (including but not limited to any source code, binaries, designs, specifications, models, documents, layouts, images, photographs, animations, video, audio, music, text incorporated into the Software), the accompanying printed materials, and any copies of the Software, and any trademarks or service marks of Critical Manufacturing are owned by Critical Manufacturing unless explicitly stated otherwise. All title and intellectual property rights in and to the content that may be accessed through use of the Software is the property of the respective content owner and is protected by applicable copyright or other intellectual property laws and treaties.

## **Trademark Information**

Critical Manufacturing is a registered trademark of Critical Manufacturing.

All other trademarks are property of their respective owners.