



**Critical**  
manufacturing  
an ASM PT company

# Runtime

11.0

March 2026

## DOCUMENT ACCESS

Public

## DISCLAIMER

The contents of this document are under copyright of Critical Manufacturing S.A. it is released on condition that it shall not be copied in whole, in part or otherwise reproduced (whether by photographic, or any other method) and the contents therefore shall not be divulged to any person other than that of the addressee (save to other authorized offices of his organization having need to know such contents, for the purpose for which disclosure is made) without prior written consent of submitting company.

## Runtime vs Configuration

Some key differences should be highlighted to dispel any doubts concerning the concepts associated with the execution of a Connect IoT environment in Critical Manufacturing MES:

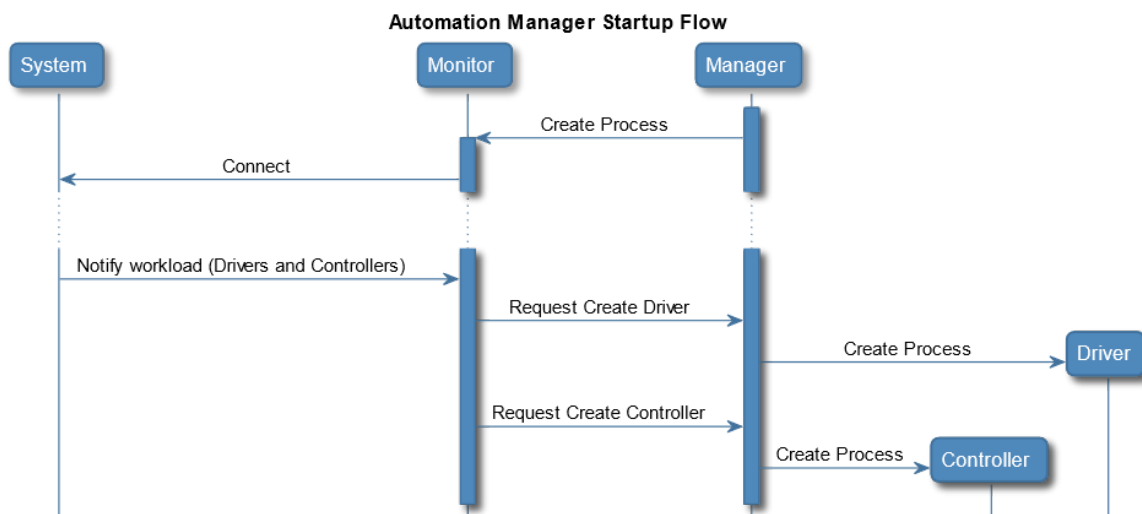
### Configuration

Lives on the MES, making it the centralized interface for all configuration of the system, including IoT. This can be created through the GUI or through master data upload.

### Runtime

This refers to the execution of the application. This be a nodejs process that will run either as a container, Windows Service or executed directly in the console (e.g. for testing purposes). This application will retrieve the configuration from the MES and will comprise the dependencies and their location as well as the IoT entities configured in the MES.

### Runtime Processes



The Manager process is the parent process, responsible for orchestrating the application. The Manager will spin up a Monitor subprocess, which interacts with the MES system and retrieves all the needed configurations and dependencies. The Monitor will forward to the Manager what are the processes for the Driver and Controller that need to be spun up. The Driver and Controller then start and have their own runtime cycles.

This architecture is robust with a strong separation of concerns between processes. This allows also to separate the health of the Connect IoT application from the health of the physical machine connection. If a machine connection is unresponsive, there is no direct implication on the uptime of Connect IoT, which will be able to provide feedback of the machine connection and also have reconnection logic in place so that it can recover as soon as possible.





# Legal Information

## **Disclaimer**

The information contained in this document represents the current view of Critical Manufacturing on the issues discussed as of the date of publication. Because Critical Manufacturing must respond to changing market conditions, it should not be interpreted to be a commitment on the part of Critical Manufacturing, and Critical Manufacturing cannot guarantee the accuracy of any information presented after the date of publication. This document is for informational purposes only.

Critical Manufacturing makes no warranties, express, implied or statutory, as to the information herein contained.

## **Confidentiality Notice**

All materials and information included herein are being provided by Critical Manufacturing to its Customer solely for Customer internal use for its business purposes. Critical Manufacturing retains all rights, titles, interests in and copyrights to the materials and information herein. The materials and information contained herein constitute confidential information of Critical Manufacturing and the Customer must not disclose or transfer by any means any of these materials or information, whether total or partial, to any third party without the prior explicit consent by Critical Manufacturing.

## **Copyright Information**

All title and copyrights in and to the Software (including but not limited to any source code, binaries, designs, specifications, models, documents, layouts, images, photographs, animations, video, audio, music, text incorporated into the Software), the accompanying printed materials, and any copies of the Software, and any trademarks or service marks of Critical Manufacturing are owned by Critical Manufacturing unless explicitly stated otherwise. All title and intellectual property rights in and to the content that may be accessed through use of the Software is the property of the respective content owner and is protected by applicable copyright or other intellectual property laws and treaties.

## **Trademark Information**

Critical Manufacturing is a registered trademark of Critical Manufacturing.

All other trademarks are property of their respective owners.