



Critical
manufacturing
an ASM PT company

Migration Guide

11.0

March 2026

DOCUMENT ACCESS

Public

DISCLAIMER

The contents of this document are under copyright of Critical Manufacturing S.A. it is released on condition that it shall not be copied in whole, in part or otherwise reproduced (whether by photographic, or any other method) and the contents therefore shall not be divulged to any person other than that of the addressee (save to other authorized offices of his organization having need to know such contents, for the purpose for which disclosure is made) without prior written consent of submitting company.

Migration Guide

Estimated time to read: 4 minutes

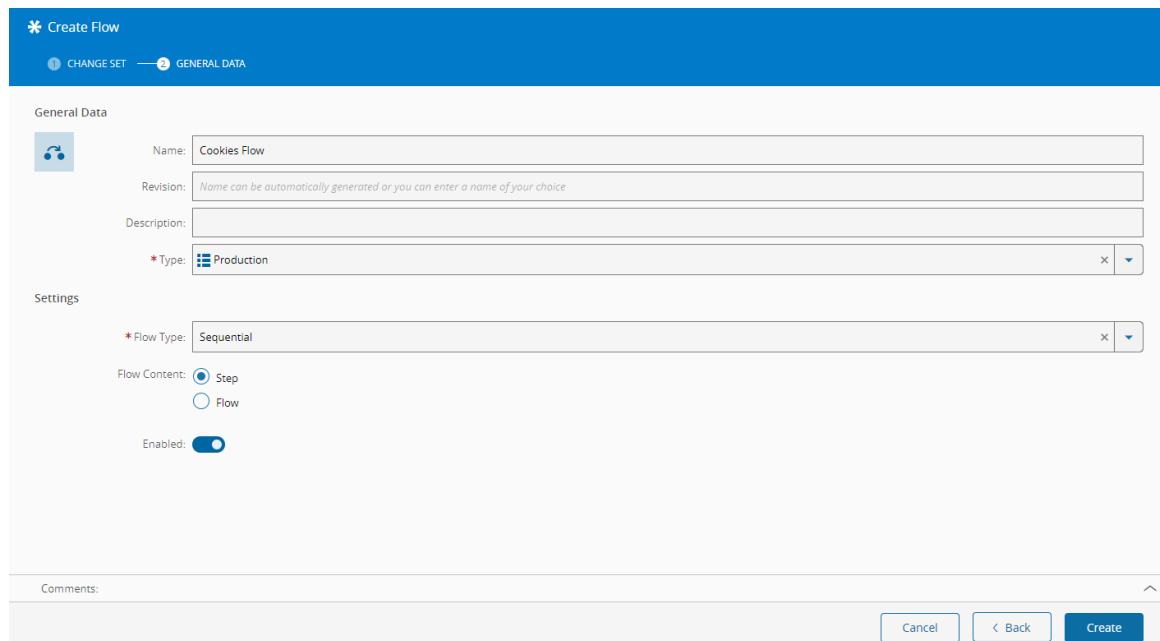
Version 11.0 introduced significant changes to Critical Manufacturing MES system, impacting several aspects of how you create and manage **Flows**, **Rework Paths**, and **Master Data Packages**. This guide highlights the key differences and provides step-by-step instructions to help you navigate these updates.

Creating a Flow

General Data

Before version 11.0, in the General Data wizard, when the Flow Type was Sequential or Alternate, you had to specify the type of child nodes for the **Flow**, whether they were **Steps** or **Flows**. After version 11.0, you only need to specify the Flow Type from the following options:

- Sequential
- Alternate (choose Single or Multiple Selection)
- Non-Sequential Block
- Line



The screenshot shows the 'Create Flow' wizard in the 'GENERAL DATA' step. The interface includes a blue header with the title and progress indicators. The main content area is divided into 'General Data' and 'Settings' sections. In the 'General Data' section, there are input fields for 'Name' (containing 'Cookies Flow'), 'Revision' (with a note: 'Name can be automatically generated or you can enter a name of your choice'), and 'Description'. Below these is a dropdown menu for '* Type' set to 'Production'. The 'Settings' section contains a dropdown for '* Flow Type' set to 'Sequential', radio buttons for 'Flow Content' (with 'Step' selected and 'Flow' unselected), and an 'Enabled' toggle switch that is turned on. At the bottom, there is a 'Comments' field and three buttons: 'Cancel', '< Back', and 'Create'.

After version 11.0

* Create Flow
?

1 CHANGE SET
2 GENERAL DATA

General Data

↻
Name: Standard Cookie Flow

Revision: *Name can be automatically generated or you can enter a name of your choice*

Description:

* Type: Production x ▼

Settings

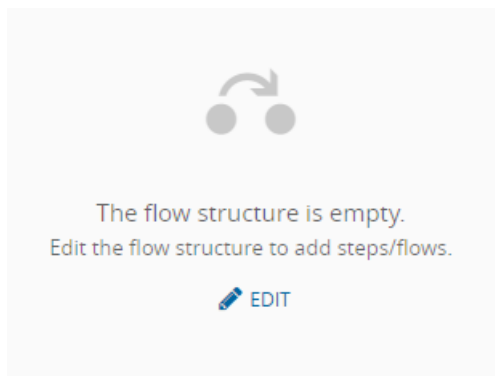
* Flow Type: Sequential x ▼

Enabled:

Comments:

Cancel
< Back
Create

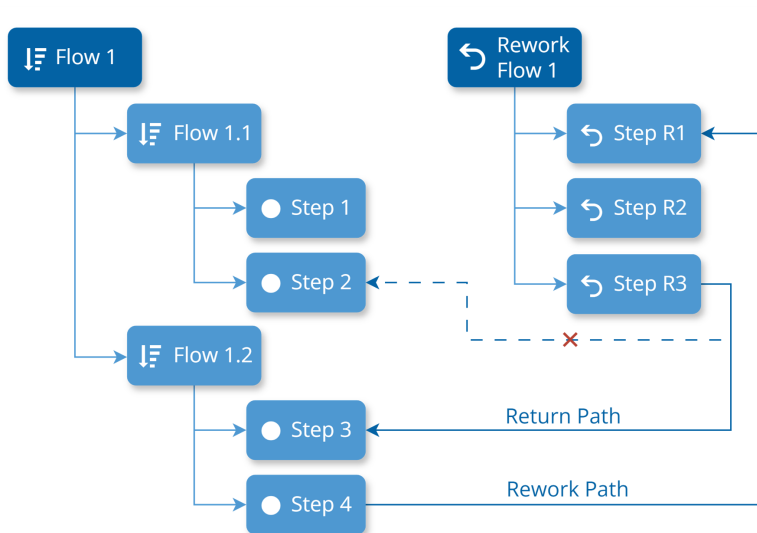
This means you don't have to indicate whether your **Flow** comprises only **Steps** or **Flows**; it can include both at the same level. You can add as many **Flow Items** as you like by selecting the button.



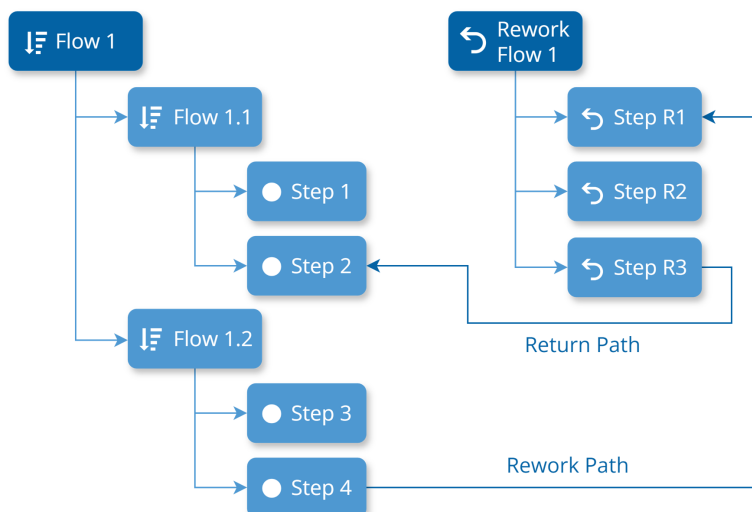
Rework Paths

Before version 11.0, when configuring Rework Flows, the Return Path had to be a **Step** within that **Flow**. So, in the **Before version 11.0** example shown below, if the Rework Path was configured in Step 4, the Return point would have to be Step 3. After version 11.0, Rework Paths can be defined at the **Parent Flow** level, allowing Return Paths to any **Step** within its structure. These Return Paths are anchored to the **TopMost Flow** where they are defined, rather than to a specific **Flow Item**. For instance, in the **After version 11.0** diagram, the Return Path can be any **Step** (e.g., Step 1, Step 2, Step 3, or Step 4) within the **TopMost Flow** (Flow 1).

Before version 11.0



After version 11.0



Master Data Template

Before version 11.0, the **Flow** sheet in the Master Data required specifying the Child Type (column D), indicating whether it was a **Step** or a **Flow**. After version 11.0, this requirement moved to the **Flow Items** sheet (column B).

Before version 11.0

A	B	C	D	E	F	G	H	I	J	K	L
Name	Description	Type	ChildType	IsAlternate	IsEnabled	IsNonSequentialBlock	IsLineFlow	DocumentationURL	IsTemplate	LastCorrelationID	ContainsLogicalNames
1	CookieProductionFlow [C.2]	Cookie Production Flow	Production Step	No	Yes	No	No		No		5 No
2	Main Flow [A.2]	Flow with Flows	Production Flow	No	Yes	No	No		No		No
3	Alternate Flow Example [A.1]	Alternate Flow Example	Production Step	Yes	Yes	No	No		No		No
4	Non-Sequential Block [A.1]	Non-Sequential Block	Production Step	No	Yes	Yes	No		No		No
5	Flow With Rework Paths [A.1]	Flow With Rework Paths	Production Step	No	Yes	No	No		No		No

After version 11.0

A	B	C	D	E	F	G	H	I	J	K	L	M	
Flow	Type	Target	IsOptional	Reworks	IsLine	LineFlow	LogicalN	OnEnterRule	OnExitRule	ConditionType	ConditionExpression	ConditionRule	Condition
1	Alternate Flow Example [A.1]	Flow	Alternate Flow Multiple Select	No									
2	Alternate Flow Example [A.1]	Flow	Alternate Flow Single Selection	No									
3	Alternate Flow Multiple Selection [A.1]	Step	Step 01	No						Expression	Scoutains(Name, "Material01")		
4	Alternate Flow Multiple Selection [A.1]	Step	Step 02	No						Rule	Scoutains(Name, "Material02")		
5	Alternate Flow Multiple Selection [A.1]	Step	Step 03	No						Rule		isMaterial01	
6	Alternate Flow Multiple Selection [A.1]	Step	Step 04	No						Rule		isMaterial02	
7	Alternate Flow Multiple Selection [A.1]	Step	Step 05	No						Rule			
8	Alternate Flow Single Selection [A.1]	Step	Step 01	No						Expression	Scoutains(Name, "Material01")		
9	Alternate Flow Single Selection [A.1]	Step	Step 02	No						Expression	Scoutains(Name, "Material02")		
10	Alternate Flow Single Selection [A.1]	Step	Step 03	No						Rule		isMaterial01	
11	Alternate Flow Single Selection [A.1]	Step	Step 04	No						Rule		isMaterial02	
12	Chocolate [A.1]	Step	Chocolate Preparation	No									
13	Chocolate [A.1]	Step	Chocolate Mixing	No									
14	Chocolate [A.1]	Step	Chocolate Cooking	No									
15	Chocolate [A.1]	Step	Chocolate Packaging	No									
16	CookiesFlow [A.2]	Step	Mixing	No									
17	CookiesFlow [A.2]	Step	Molding	No									
18	CookiesFlow [A.2]	Step	Baking	No									
19	CookiesFlow [A.2]	Step	Cooling	No									
20	CookiesFlow [A.2]	Step	Packing	No									
21	Flow With Enter and Exit Rules [A.1]	Step	Step 01	No				NotificationOnEnt	NotificationOnExit				
22	Flow With Enter and Exit Rules [A.1]	Step	Step 02	No									
23	Flow With Inherited Rework Paths [A.2]	Step	Step 01	No	description[lgotoflowpath]	No							
24	Flow With Inherited Rework Paths [A.2]	Step	Step 02	No	description[lgotoflowpath]	No							
25	Main Flow [A.2]	Step	Step 01	No	description[lgotoflowpath]	No							
26	Main Flow [A.2]	Step	Step 02	Yes	description[lgotoflowpath]	No							
27	Main Flow [A.2]	Step	Step 03	No		No							
28	Main Flow [A.2]	Flow	Sequential Flow With Condition	No									
29	Main Flow [A.2]	Flow	Alternate Flow Multiple Selection	No									
30	Main Flow [A.2]	Flow	Alternate Flow Single Selection	No									
31	Main Flow [A.2]	Flow	Flow With Enter and Exit Rules	No									
32	Main Flow [A.2]	Flow	Flow With Inherited Rework Paths	No									
33	Non-Sequential Block [A.1]	Step	Step 01	No									
34	Non-Sequential Block [A.1]	Step	Step 02	No									
35	Non-Sequential Block [A.1]	Step	Step 03	No									
36	Sequential Flow With Conditional Steps [A.1]	Step	Step 01	Yes						Expression	Scoutains(Name, "Material01")		

After version 11.0, it is also possible to choose whether your Alternate **Flow** uses Single or Multiple Selection (column J). Single Selection considers only the first **Flow Item** whose condition resolves to true when attempting to move the **Material** to the next **Step**, while Multiple Selection allows choosing from any **Flow Items** with true conditions. Before version 11.0, Multiple Selection was the default setting, and this choice wasn't available.

Before version 11.0

A	B	C	D	E	F	G	H	I	J	K	L
Name	Description	Type	ChildType	IsAlternate	IsEnabled	IsNonSequentialBlock	IsLineFlow	DocumentationURL	IsTemplate	LastCorrelationID	ContainsLogicalNames
1	CookieProductionFlow [C.2]	Cookie Production Flow	Production Step	No	Yes	No	No		No		5 No
2	Main Flow [A.2]	Flow with Flows	Production Flow	No	Yes	No	No		No		No
3	Alternate Flow Example [A.1]	Alternate Flow Example	Production Step	Yes	Yes	No	No		No		No
4	Non-Sequential Block [A.1]	Non-Sequential Block	Production Step	No	Yes	Yes	No		No		No
5	Flow With Rework Paths [A.1]	Flow With Rework Paths	Production Step	No	Yes	No	No		No		No

After version 11.0

A	B	C	D	E	F	G	H	I	J
Name	Description	Type	IsAlternate	IsEnabled	IsNonSequentialBlock	IsLineFlow	DocumentationURL	IsTemplate	AlternateFlowSelectionType
1	Alternate Flow Example [A.1]	Alternate Flow Example	Production	Yes	Yes	No	No	No	Multiple
2	Alternate Flow Multiple Selection [A.1]	Alternate Flow Multiple Selection	General	Yes	Yes	No	No	No	Multiple
3	Alternate Flow Single Selection [A.1]	Alternate Flow Single Selection	General	Yes	Yes	No	No	No	Single
4	Chocolate [A.1]	Chocolates Flow	Production	No	Yes	No	No	No	
5	CookiesFlow [A.2]	CookiesFlow Flow	Production	No	Yes	No	No	No	
6	Flow With Enter and Exit Rules [A.1]	Flow With Enter and Exit Rules	General	No	Yes	No	No	No	
7	Flow With Inherited Rework Paths [A.2]	Flow With Inherited Rework Paths	General	No	Yes	No	No	No	
8	Line Flow [A.1]	Flow With Line Flow	FrontEnd	No	Yes	No	Yes	No	
9	Main Flow [A.2]	Flow with Flows and Steps	General	No	Yes	No	No	No	
10	Non-Sequential Block [A.1]	Non-Sequential Block	Production	No	Yes	Yes	No	No	
11	Sequential Flow With Conditional Steps [A.1]	Sequential Flow With Conditional Steps	General	No	Yes	No	No	No	
12	Standard Cookie Flow [A.1]	Standard Cookie Flow	Production	No	Yes	No	No	No	

In version 11.0, the **Flow** Structure sheet was renamed to **Flow Items**, requiring you to change the name of this sheet in your Master Data template to be compatible with versions above 11.0. In addition, it's now possible to set Rework Path conditions, such as Expressions (column L), Rules (column M), Sampling Steps (column N), and Sampling Plans (column O). You can also define entry and exit Rules for **Steps** (columns J and K).

Before version 11.0

	A	B	C	D	E	F	G	H
1	Flow	Target	IsOptional	Reworks	IsLine	LineFlows	LogicalName	CorrelationID
2	CookieProductionFlow [C.2]	Mixing	No		No			1
3	CookieProductionFlow [C.2]	Molding	No	description[[]gotoflowpath]Remolding:A.1/Remixing:1 returnstep[Baking]reason[Deformed]isinlinerework[]	No			2
4	CookieProductionFlow [C.2]	Baking	No		No			3
5	CookieProductionFlow [C.2]	Cooling	No		No			4
6	CookieProductionFlow [C.2]	Packing	No		No			5
7	Main Flow [A.2]	Alternate Flow Example	No		No			1
8	Main Flow [A.2]	Non-Sequential Block	No		No			2
9	Flow With Rework Paths [A.1]	Step 01	No	description[[]gotoflowpath]CookiesFlow:A.1/Mixing:1 sourceflowpath[Flow With Inherited Rework Paths:A.1/Step 01:1] returnflow No	No			1
10	Flow With Rework Paths [A.1]	Step 02	No	description[[]gotoflowpath]CookiesFlow:A.1/Mixing:1 sourceflowpath[Flow With Inherited Rework Paths:A.1/Step 02:2] returnflow No	No			2

After version 11.0

	A	B	C	D	E	F	G	H	I	J	K	L	M	
1	Flow	Type	Target	IsOptional	Reworks	IsLine	LineFlow	LogicalName	OnEnterRule	OnExitRule	ConditionType	ConditionExpression	ConditionRule	Conditions
2	Alternate Flow Example [A.1]	Flow	Alternate Flow Multiple Select	No	No	No								
3	Alternate Flow Example [A.1]	Flow	Alternate Flow Single Selection	No	No	No								
4	Alternate Flow Multiple Selection [A.1]	Step	Step 01	No	No	No					Expression	Scotains(Name, "Material01")		
5	Alternate Flow Multiple Selection [A.1]	Step	Step 02	No	No	No					Expression	Scotains(Name, "Material02")		
6	Alternate Flow Multiple Selection [A.1]	Step	Step 03	No	No	No					Rule		isMaterial01	
7	Alternate Flow Multiple Selection [A.1]	Step	Step 04	No	No	No					Rule		isMaterial02	
8	Alternate Flow Multiple Selection [A.1]	Step	Step 05	No	No	No								
9	Alternate Flow Single Selection [A.1]	Step	Step 01	No	No	No					Expression	Scotains(Name, "Material01")		
10	Alternate Flow Single Selection [A.1]	Step	Step 02	No	No	No					Expression	Scotains(Name, "Material02")		
11	Alternate Flow Single Selection [A.1]	Step	Step 03	No	No	No					Rule		isMaterial01	
12	Alternate Flow Single Selection [A.1]	Step	Step 04	No	No	No					Rule		isMaterial02	
13	Chocolate [A.1]	Step	Chocolate Preparation	No	No	No								
14	Chocolate [A.1]	Step	Chocolate Mixing	No	No	No								
15	Chocolate [A.1]	Step	Chocolate Cooking	No	No	No								
16	Chocolate [A.1]	Step	Chocolate Packaging	No	No	No								
22	CookiesFlow [A.2]	Step	Mixing	No	No	No								
23	CookiesFlow [A.2]	Step	Molding	No	No	No								
24	CookiesFlow [A.2]	Step	Baking	No	No	No								
25	CookiesFlow [A.2]	Step	Cooling	No	No	No								
26	CookiesFlow [A.2]	Step	Packing	No	No	No								
27	Flow With Enter and Exit Rules [A.1]	Step	Step 01	No	No	No					NotificationOnEnt	NotificationOnExit		
28	Flow With Enter and Exit Rules [A.1]	Step	Step 02	No	No	No								
31	Flow With Inherited Rework Paths [A.2]	Step	Step 01	No	description[[]gotoflowpath]	No								
32	Flow With Inherited Rework Paths [A.2]	Step	Step 02	No	description[[]gotoflowpath]	No								
49	Main Flow [A.2]	Step	Step 01	No	description[[]gotoflowpath]	No								
50	Main Flow [A.2]	Step	Step 02	Yes	description[[]gotoflowpath]	No								
51	Main Flow [A.2]	Step	Step 03	No	description[[]gotoflowpath]	No								
52	Main Flow [A.2]	Flow	Sequential Flow With Conditio	No		No								
53	Main Flow [A.2]	Flow	Alternate Flow Multiple Select	No		No								
54	Main Flow [A.2]	Flow	Alternate Flow Single Selection	No		No								
55	Main Flow [A.2]	Flow	Flow With Enter and Exit Rules	No		No								
56	Main Flow [A.2]	Flow	Flow With Inherited Rework Pa	No		No								
166	Non-Sequential Block [A.1]	Step	Step 01	No	No	No								
167	Non-Sequential Block [A.1]	Step	Step 02	No	No	No								
168	Non-Sequential Block [A.1]	Step	Step 03	No	No	No								
169	Sequential Flow With Conditional Steps [A.1]	Step	Step 01	Yes	No	No					Expression	Scotains(Name, "Material01")		

Beyond the basic information, you can specify additional settings in version 11.0, such as whether the Rework Path applies to Queued and Processed States (columns O and P), and set Rules for On Rework (column Q).

Before version 11.0

	A	B	C	D	E	F	G	H	I	J	K	L	M
1	Flow	SourceStep	GotoFlowPath	ReturnStepPosition	IsInLineRework	Descriptio	DocumentationUrl	GotoFlow	GotoStep	IsTemplate	ReturnFlowPath	ReturnStep	ReworkReason
2	CookieProductionFlow [C.2]	Molding	Remolding:A.1/Remixing:1	3				Remolding [A]	Remixing	No	CookieProductionFlow:C.1/Baking:3	Baking	Deformed
3	Flow With Inherited Rework Paths [Step 02]	CookiesFlow:A.1/Mixing:1		1				CookiesFlow [A]	Mixing	No	Flow With Inherited Rework Paths:A.1/Step 01:1	Step 01	Deformed
4	Flow With Inherited Rework Paths [Step 01]	CookiesFlow:A.1/Mixing:1		1				CookiesFlow [A]	Mixing	No	Flow With Inherited Rework Paths:A.1/Step 01:1	Step 01	Deformed

	A	H	I	J	K	L	M	N	O	P	Q
1	Flow	GoToFlow	GoToStep	IsTemplate	ReturnFlowPath	ReturnStep	ReworkReason	SourceFlowPath	SourceFlowMission	Order	SourceStepPosition
2	CookieProductionFlow [C.2]	Remolding [A]	Remixing	No	CookieProductionFlow:C1/Baking:3	Baking	Deformed	CookieProductionFlow:C1/Molding:2	CookieProductionFlow [C.2]	1	2
3	Flow With Rework Paths [A.2]	CookiesFlow [A]	Mixing	No	Flow With Inherited Rework Paths:A1/Step 01:1	Step 01	Deformed	Flow With Inherited Rework Paths:A:1/Step 02:2	Flow With Rework Paths [A.2]	1	2
4	Flow With Rework Paths [A.2]	CookiesFlow [A]	Mixing	No	Flow With Inherited Rework Paths:A3/Step 01:1	Step 01	Deformed	Flow With Inherited Rework Paths:A:1/Step 01:1	Flow With Rework Paths [A.2]	1	1

After version 11.0

	A	B	C	D	E	F	G	H	I	J
1	Flow	SourceStep	GoToFlowPath	ReturnStepPosition	IsInlineRework	Description	GoToFlow	GoToStep	IsTemplate	ReturnFlowPath
2	Flow With Inherited Rework Paths [A.2]	Step 02	CookiesFlow:A:1/Mixing:1	1			CookiesFlow [A]	Mixing	No	Flow With Inherited Rework Paths:A:1/Step 01:1
3	Flow With Inherited Rework Paths [A.2]	Step 01	CookiesFlow:A:1/Mixing:1	1			CookiesFlow [A]	Mixing	No	Flow With Inherited Rework Paths:A:1/Step 01:1
4	Main Flow [A.2]	Step 02	CookiesFlow:A:1/Packing:5	6			CookiesFlow [A]	Packing	No	Main Flow:A:1/Step 03:6
5	Main Flow [A.2]	Step 01	CookiesFlow:A:1/Packing:5	6			CookiesFlow [A]	Packing	No	Main Flow:A:1/Step 03:6

	K	L	M	N	O	P	Q	R	S	T
1	ReturnStep	ReworkReason	SourceFlowPath	Order	ApplicableToProcessed	ApplicableToQueued	OnReworkRule	ReturnFlow	SourceFlow	SourceStepPosition
2	Step 01	Deformed	Flow With Inherited Rework Paths:A:1/Step 02:2	1	Yes	Yes	NotificationOnRework	Flow With Inherited Rework Paths [A]	Flow With Inherited Rework Paths [A]	2
3	Step 01	Deformed	Flow With Inherited Rework Paths:A:1/Step 01:1	2	Yes	Yes		Flow With Inherited Rework Paths [A]	Flow With Inherited Rework Paths [A]	1
4	Step 03	Deformed	Main Flow:A:1/Flow With Inherited Rework Paths:A:11/Step 02:2	1	Yes	No	NotificationOnRework	Main Flow [A]	Flow With Inherited Rework Paths [A]	2
5	Step 03		Main Flow:A:1/Flow With Inherited Rework Paths:A:11/Step 01:1	2	Yes	No		Main Flow [A]	Flow With Inherited Rework Paths [A]	1



Legal Information

Disclaimer

The information contained in this document represents the current view of Critical Manufacturing on the issues discussed as of the date of publication. Because Critical Manufacturing must respond to changing market conditions, it should not be interpreted to be a commitment on the part of Critical Manufacturing, and Critical Manufacturing cannot guarantee the accuracy of any information presented after the date of publication. This document is for informational purposes only.

Critical Manufacturing makes no warranties, express, implied or statutory, as to the information herein contained.

Confidentiality Notice

All materials and information included herein are being provided by Critical Manufacturing to its Customer solely for Customer internal use for its business purposes. Critical Manufacturing retains all rights, titles, interests in and copyrights to the materials and information herein. The materials and information contained herein constitute confidential information of Critical Manufacturing and the Customer must not disclose or transfer by any means any of these materials or information, whether total or partial, to any third party without the prior explicit consent by Critical Manufacturing.

Copyright Information

All title and copyrights in and to the Software (including but not limited to any source code, binaries, designs, specifications, models, documents, layouts, images, photographs, animations, video, audio, music, text incorporated into the Software), the accompanying printed materials, and any copies of the Software, and any trademarks or service marks of Critical Manufacturing are owned by Critical Manufacturing unless explicitly stated otherwise. All title and intellectual property rights in and to the content that may be accessed through use of the Software is the property of the respective content owner and is protected by applicable copyright or other intellectual property laws and treaties.

Trademark Information

Critical Manufacturing is a registered trademark of Critical Manufacturing.

All other trademarks are property of their respective owners.