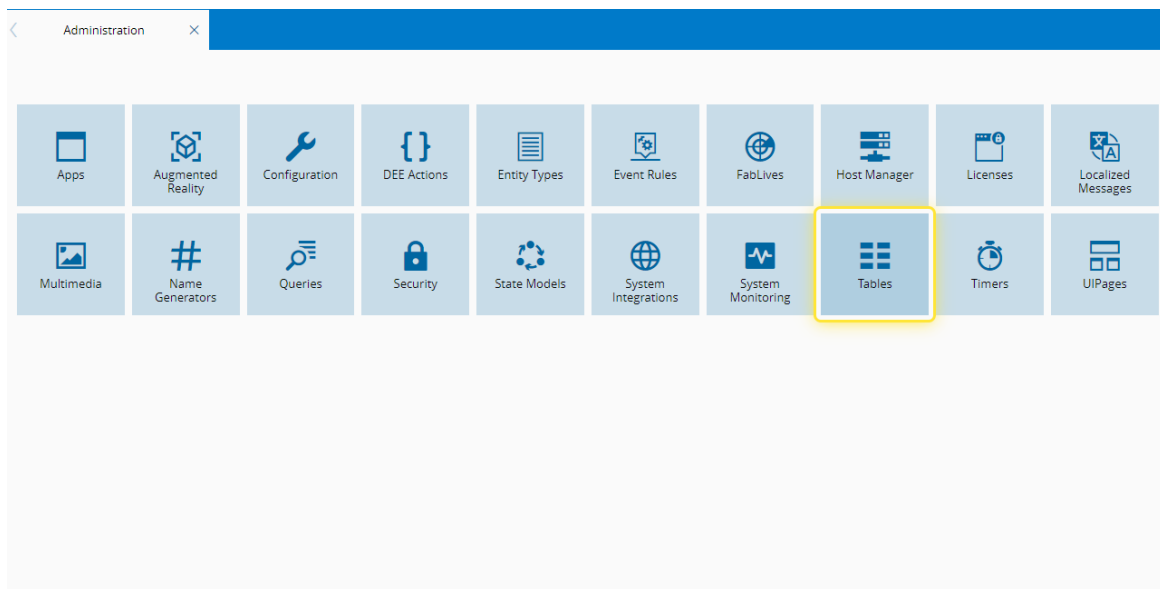


How to: Add Value to Smart Table

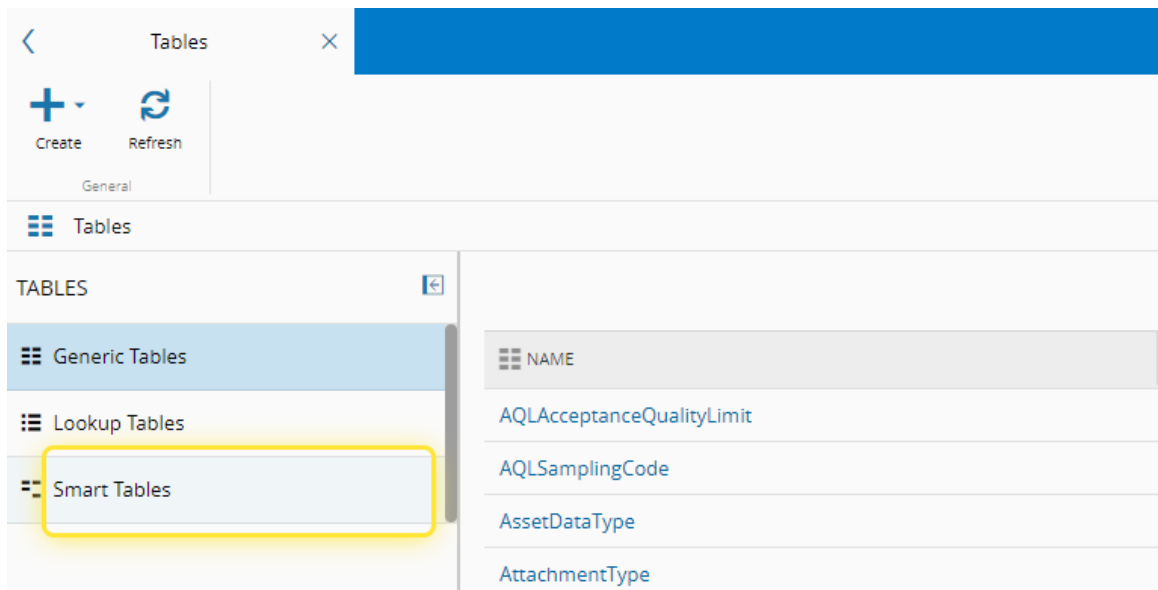
1. Go to the Administration menu.



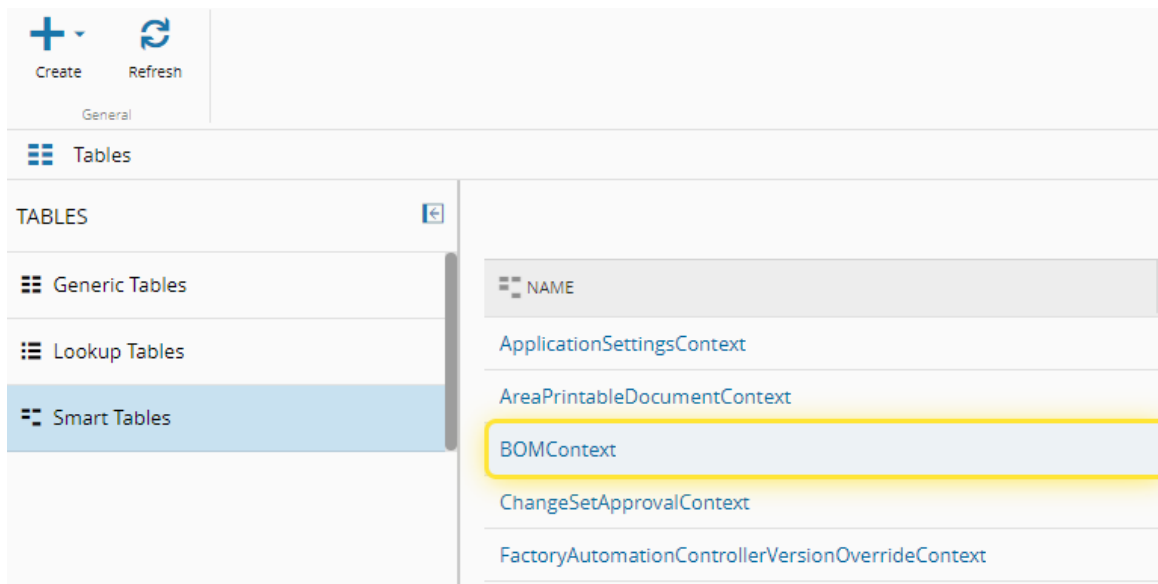
2. Select the Tables tile.



3. Select the Smart Tables option.

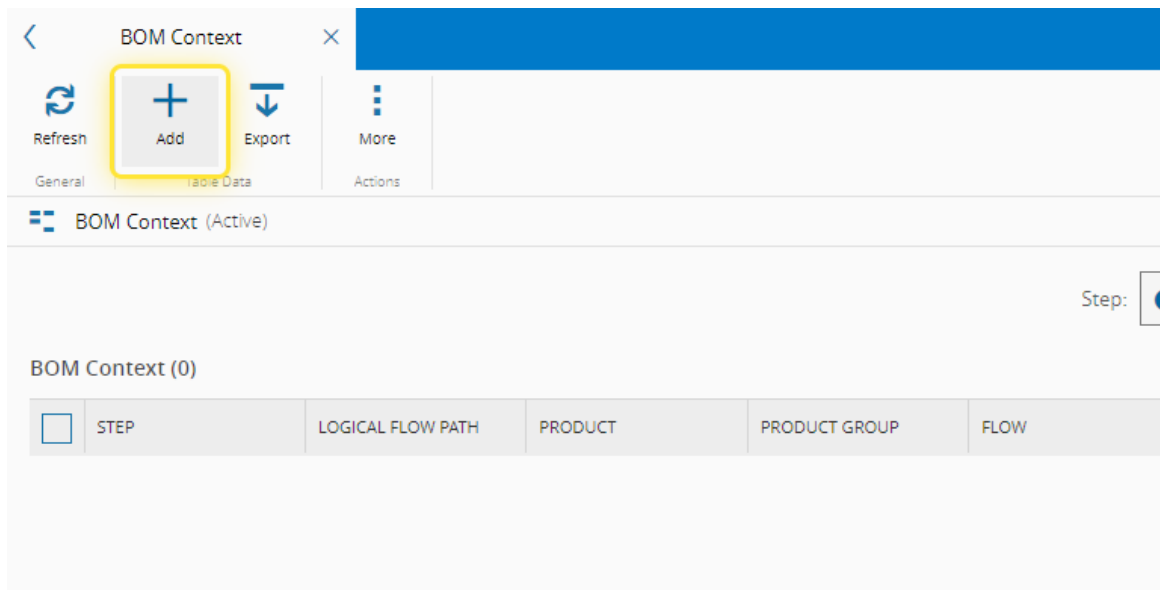


4. Select the Name of the Smart Table you need.

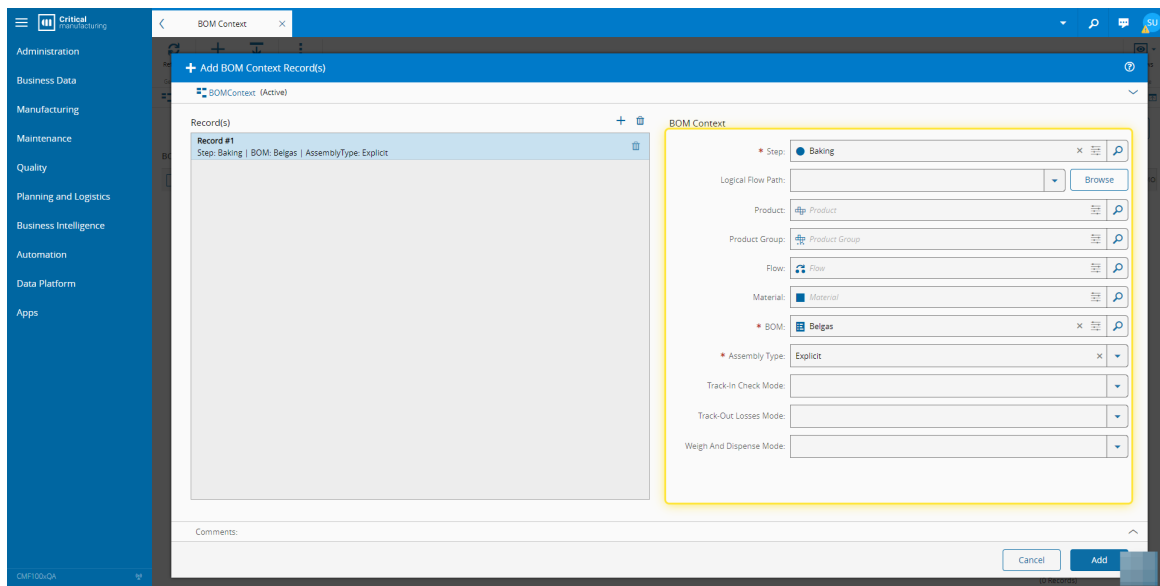


5. Select the Add button.

For more information, see [Smart Tables - Critical Manufacturing Documentation Portal](#)



6. Complete the necessary fields.



7. Select the Add button.

The screenshot displays the 'Add BOM Context Records' dialog box within the Critical Manufacturing 11.0 interface. The left sidebar contains navigation options: Administration, Business Data, Manufacturing, Maintenance, Quality, Planning and Logistics, Business Intelligence, Automation, Data Platform, and Apps. The main window title is 'BOM Context'. The dialog title is '+ Add BOM Context Records'. Below the title, there is a section for 'BOMContext: (Active)' containing a table of records. One record is listed: 'Record #1' with details 'Step: Baking | BOM: Belgas | AssemblyType: Explicit'. To the right of the table is a 'BOM Context' configuration form with the following fields: 'Step' (radio button selected for 'Baking'), 'Logical Flow Path' (dropdown with 'Browse' button), 'Product' (dropdown with 'Product' selected), 'Product Group' (dropdown with 'Product Group' selected), 'Flow' (dropdown with 'Flow' selected), 'Material' (dropdown with 'Material' selected), 'BOM' (radio button selected for 'Belgas'), 'Assembly Type' (dropdown with 'Explicit' selected), 'Track-In Check Mode' (dropdown), 'Track-Out Losses Mode' (dropdown), and 'Weigh And Dispense Mode' (dropdown). At the bottom right of the dialog, there are 'Cancel' and 'Add' buttons, with the 'Add' button highlighted by a yellow rectangular box.