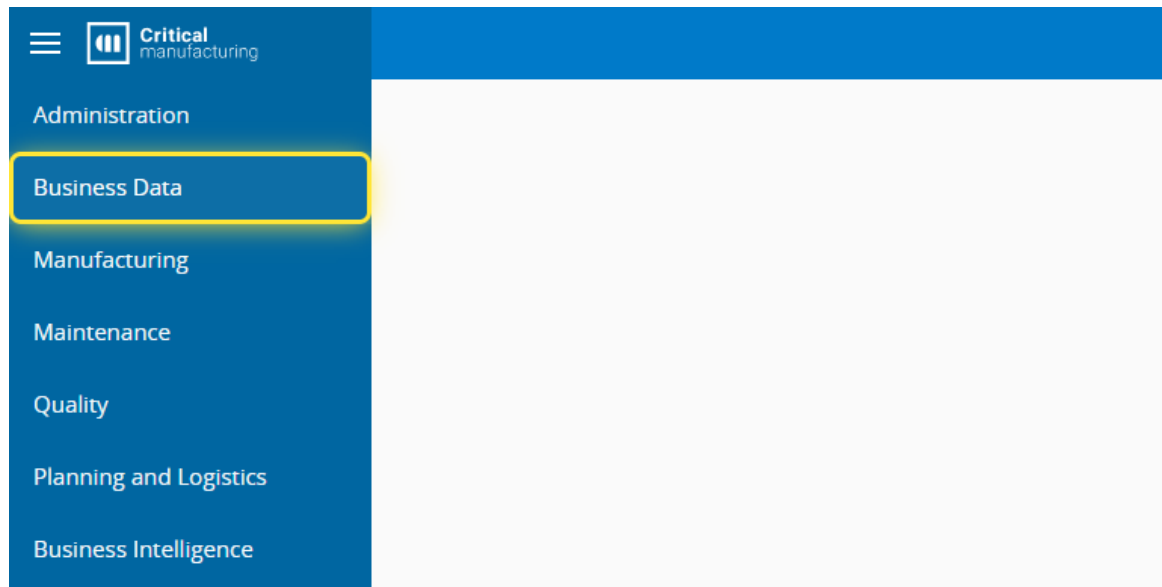
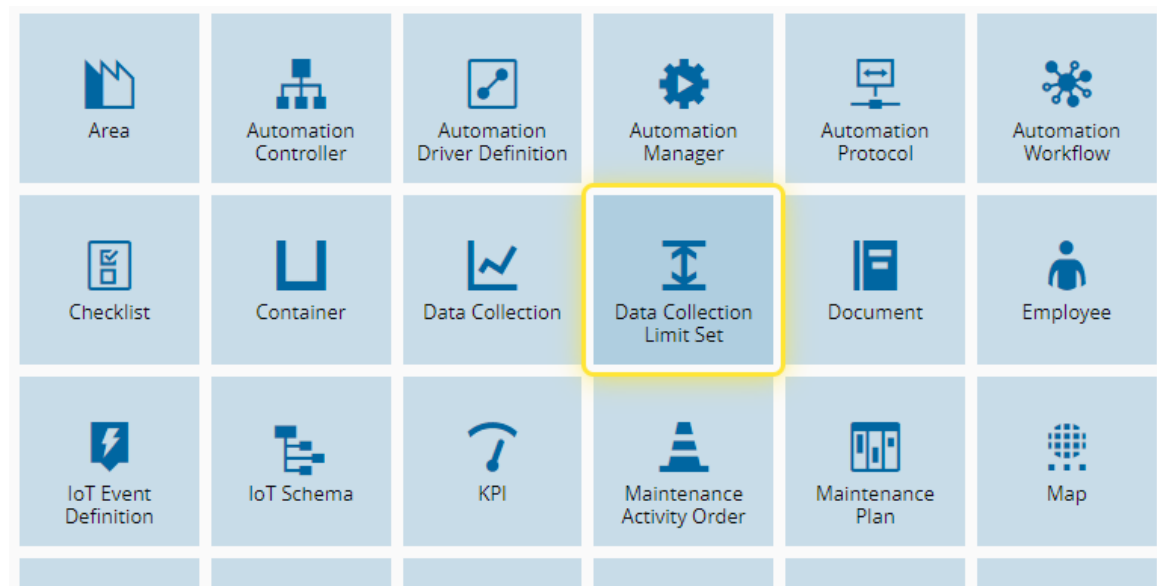


How to: Create a Data Collection Limit Set

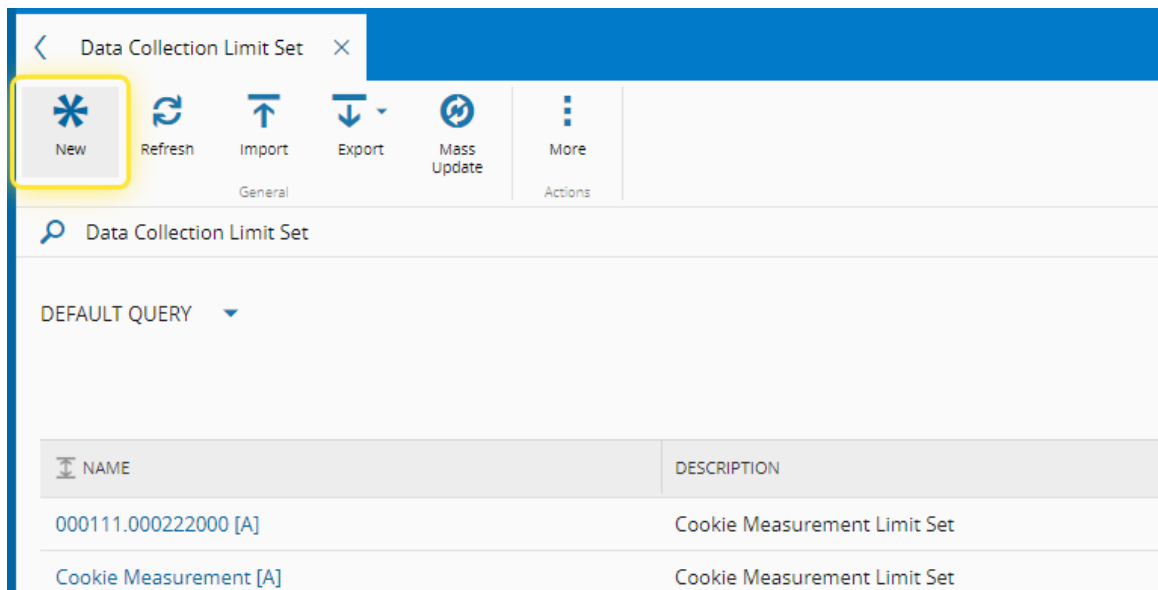
1. Go to the Business Data menu.



2. Select the Data Collection Limit Set entity.

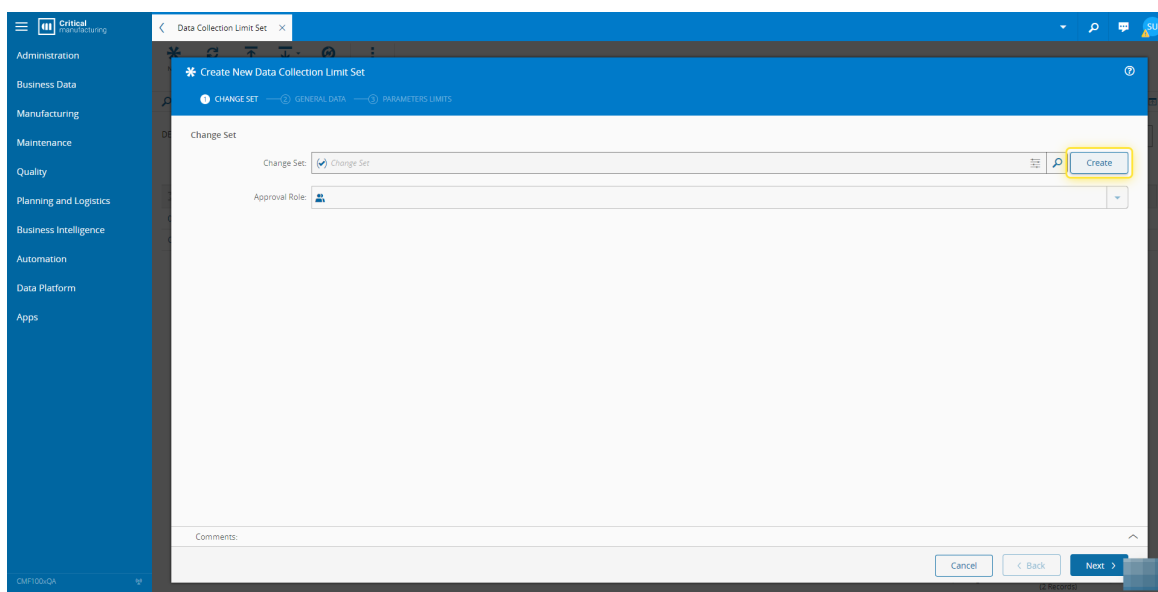


3. Select the New button.

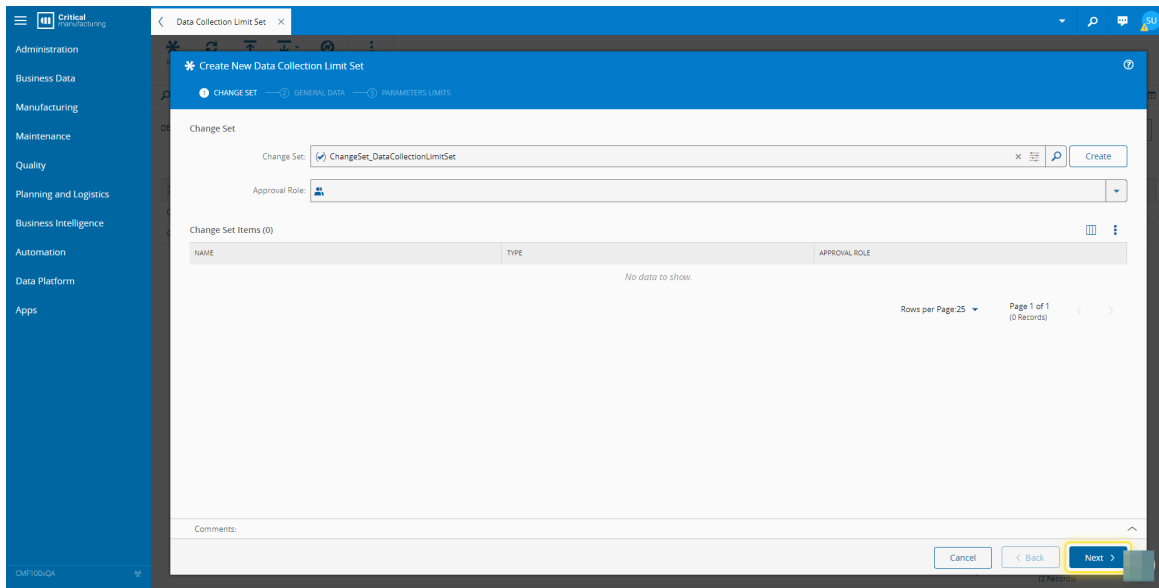


4. Under the Change Set tab, select an existing Change Set or Create a new one.

For more information, see [Create Change Set - Critical Manufacturing Documentation Portal](#)

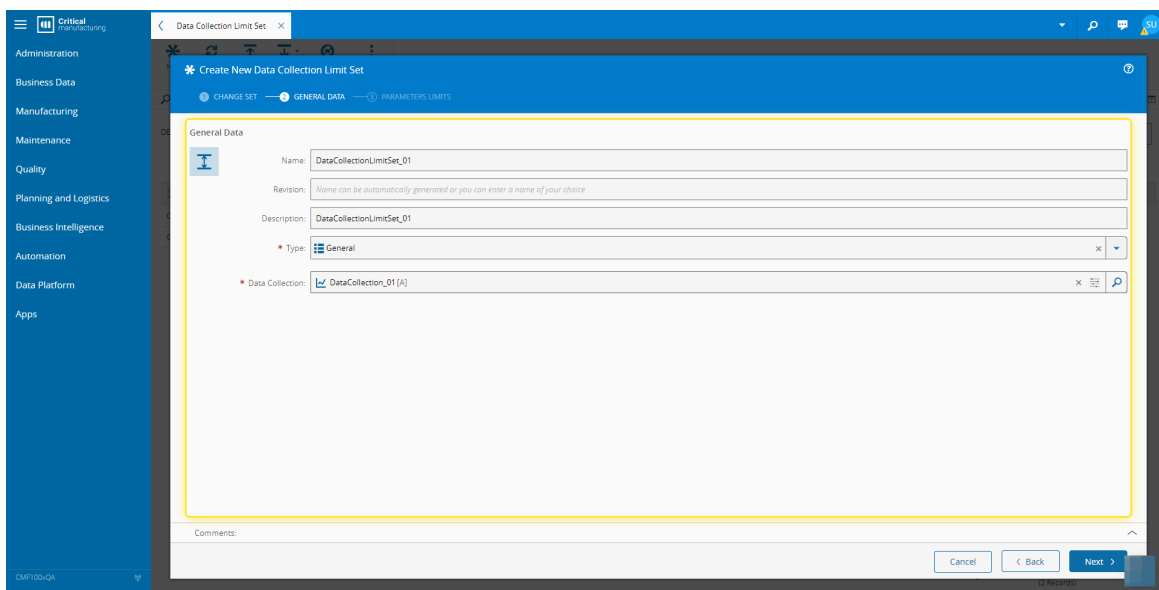


5. Select the Next button.

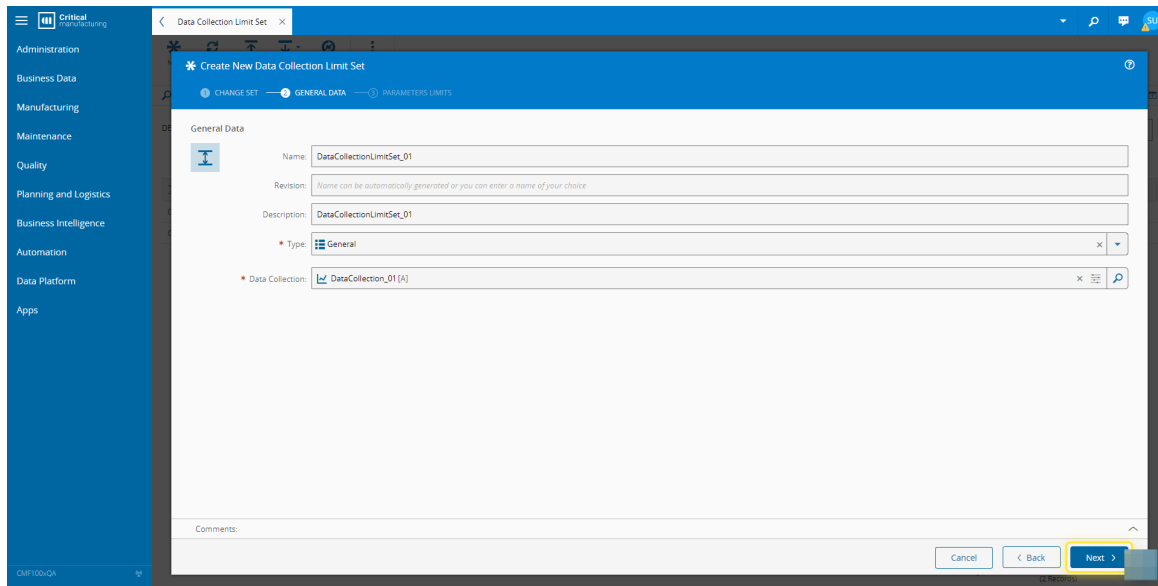


6. Under the General Data tab, complete the necessary fields.

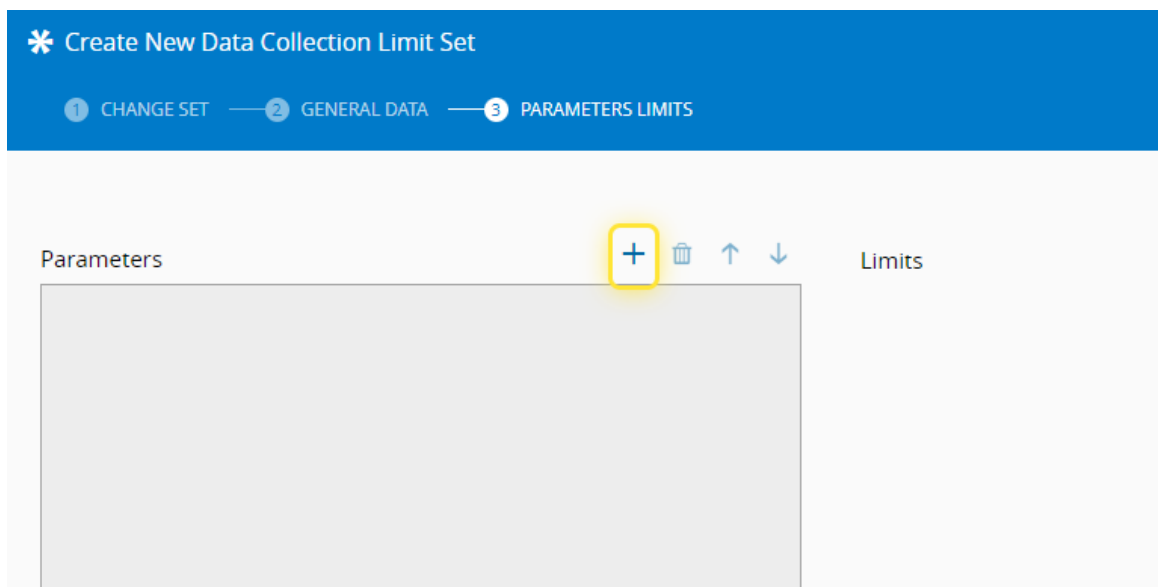
For more information, see [Create Data Collection Limit Set - Critical Manufacturing Documentation Portal](#)



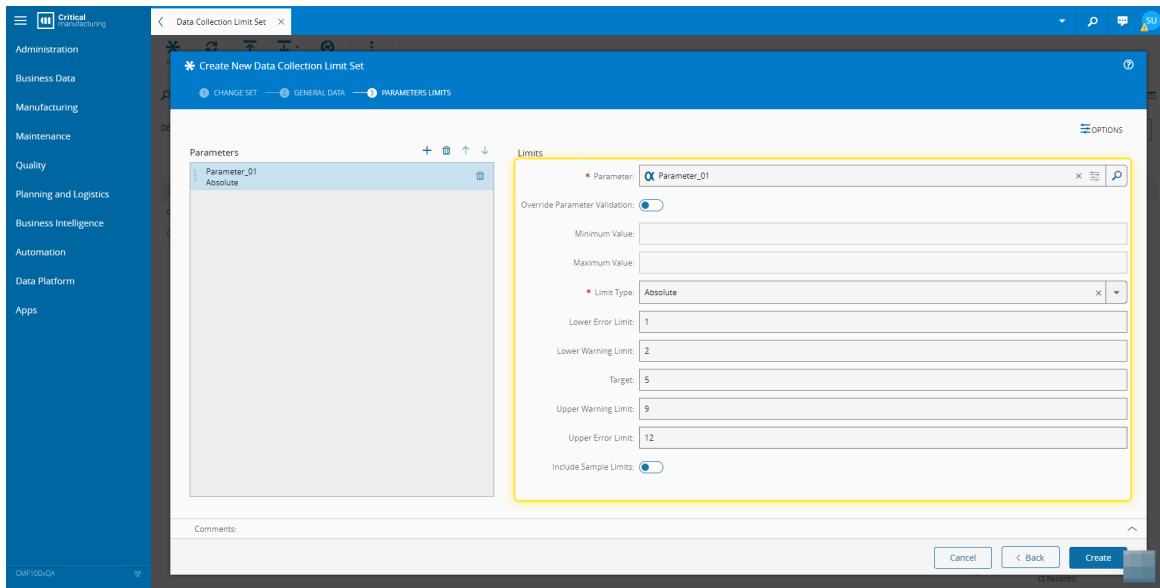
7. Select the Next button.



8. Select + to add Parameters.



9. Enter the needed Limits information.



10. Select the Create button.

