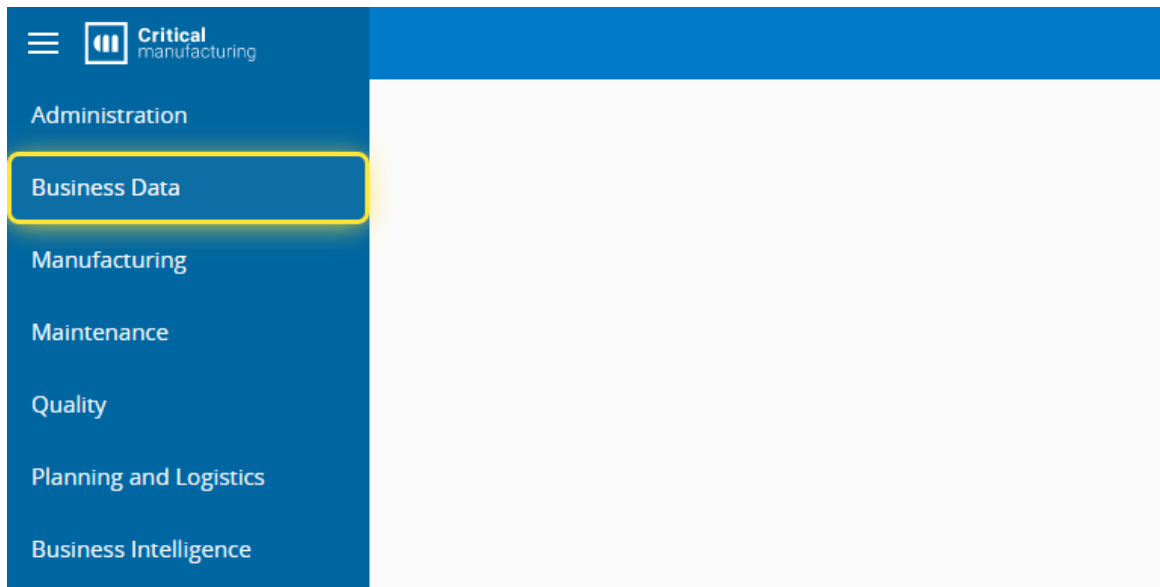
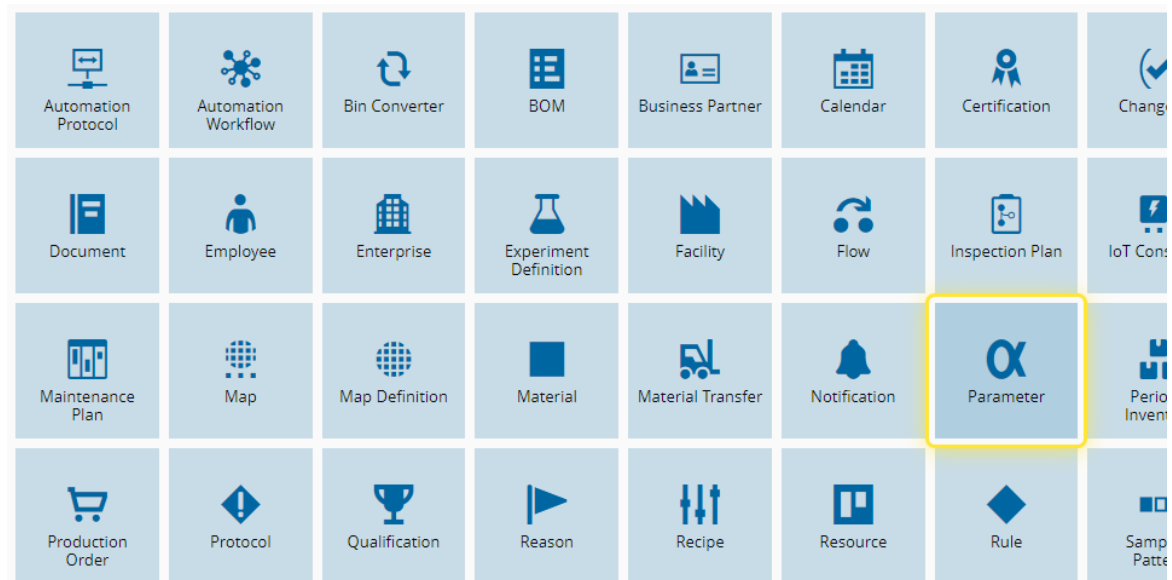


How to: Create a Parameter

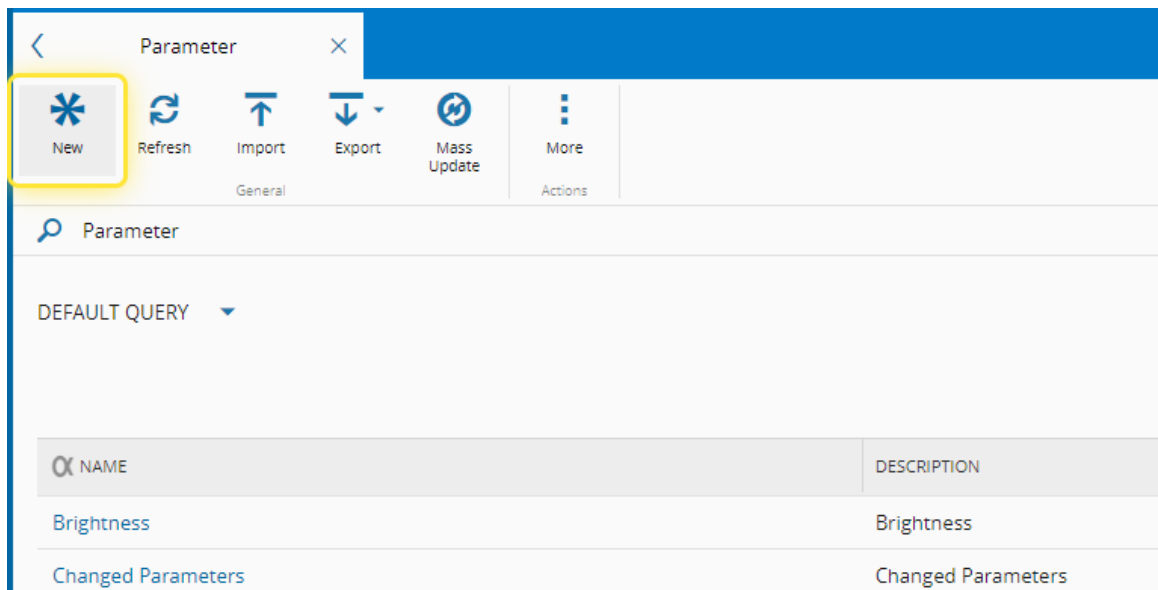
1. Go to the Business Data menu.



2. Select the Parameter entity.

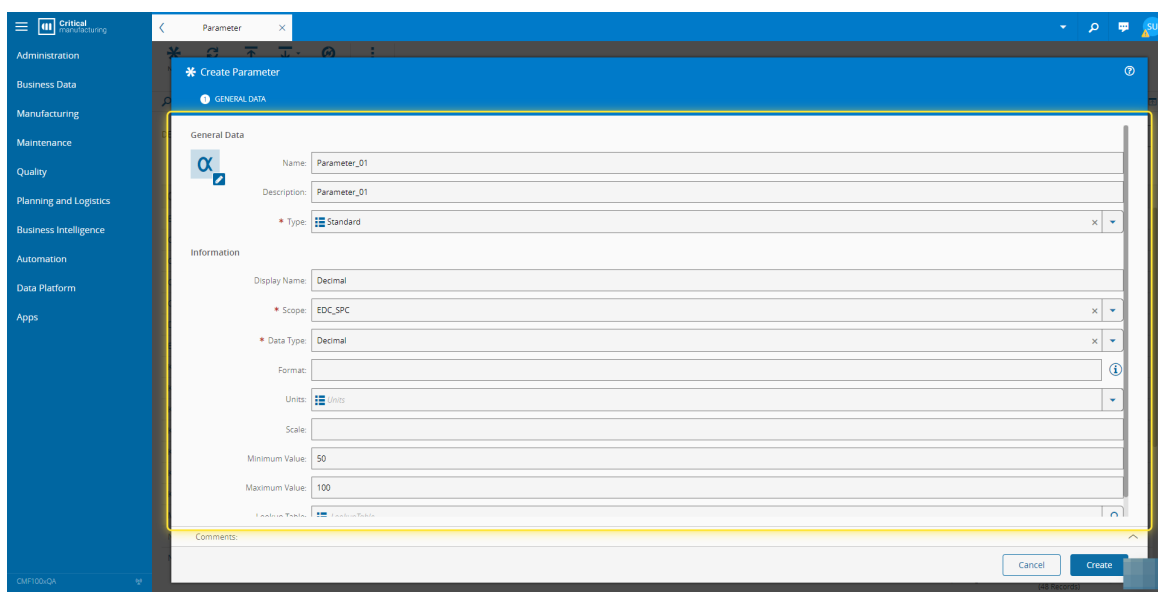


3. Select the New button.



4. Under the General Data tab, complete the necessary fields.

For more information, see [Create Parameter - Critical Manufacturing Documentation Portal](#)



5. Select the Create button

The screenshot shows the 'Create Parameter' dialog box in the Critical Manufacturing 11.0 application. The dialog is titled 'Create Parameter' and has a 'GENERAL DATA' tab. It contains the following fields and values:

- Name: Parameter_01
- Description: Parameter_01
- Type: Standard
- Display Name: Decimal
- Scope: EDC_SPC
- Data Type: Decimal
- Format: (empty)
- Units: (empty)
- Scale: (empty)
- Minimum Value: 50
- Maximum Value: 100
- Comments: (empty)

The 'Create' button is highlighted with a yellow box.