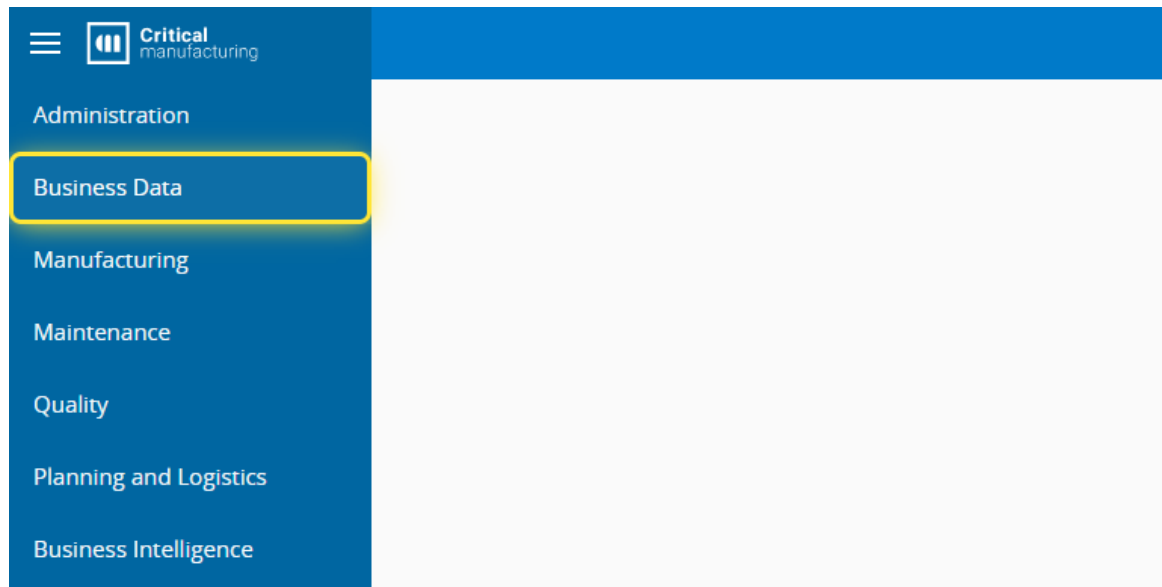
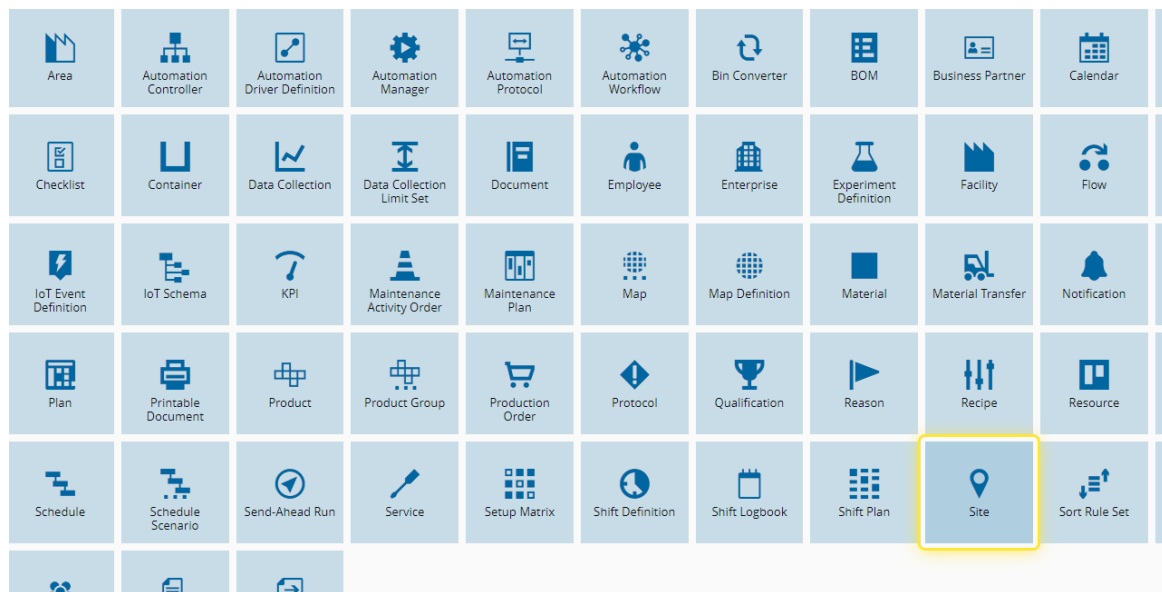


# How to: Create a Site

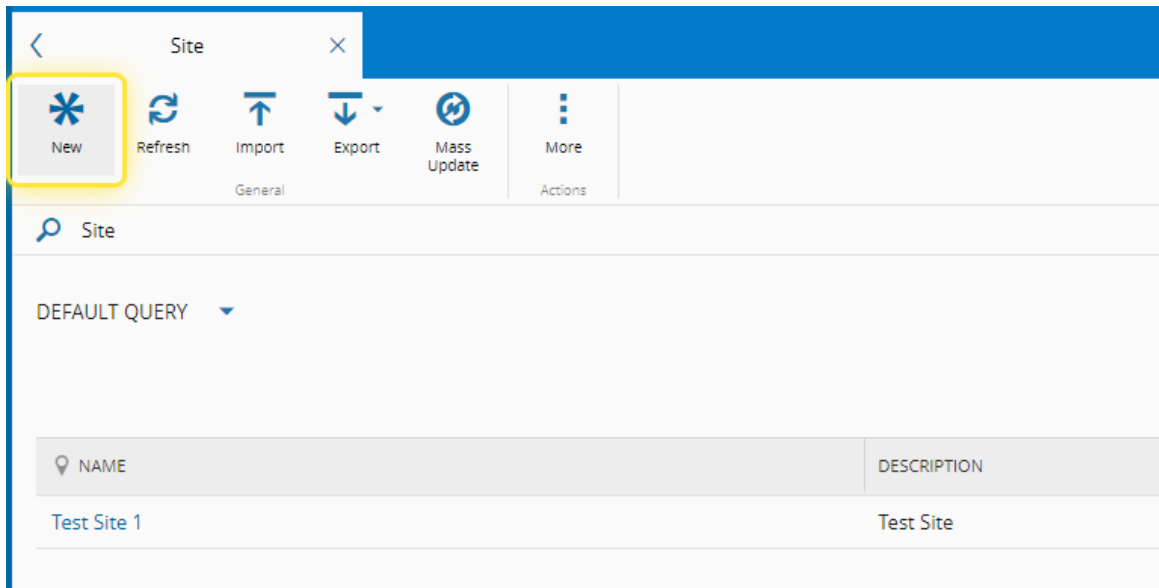
1. Go to the Business Data menu.



2. Select the Site entity.

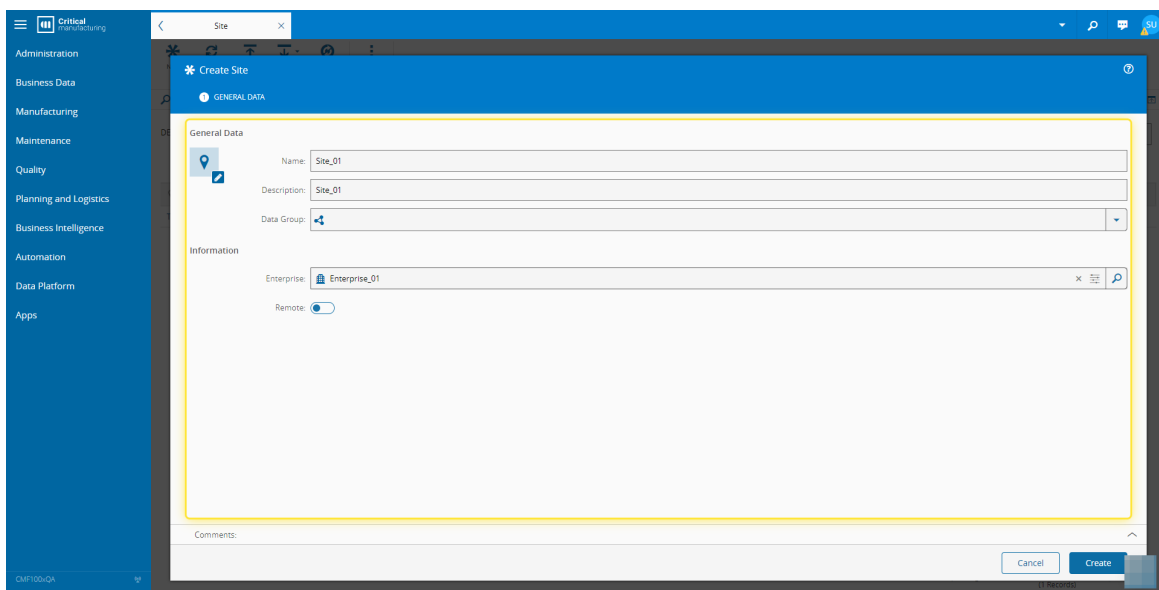


3. Select the New button.



4. Under the General Data tab, complete the necessary fields.

For more information, see [Create Site - Critical Manufacturing Documentation Portal](#)



5. Select the Create button.

The screenshot shows the 'Create Site' dialog box in the Critical Manufacturing 11.0 application. The dialog is titled 'Create Site' and has a 'GENERAL DATA' tab. It contains the following fields and controls:

- Name:** Site\_01
- Description:** Site\_01
- Data Group:** (Empty dropdown menu)
- Enterprise:** Enterprise\_01
- Remote:**

At the bottom right of the dialog, there are two buttons: 'Cancel' and 'Create'. The 'Create' button is highlighted with a yellow border.