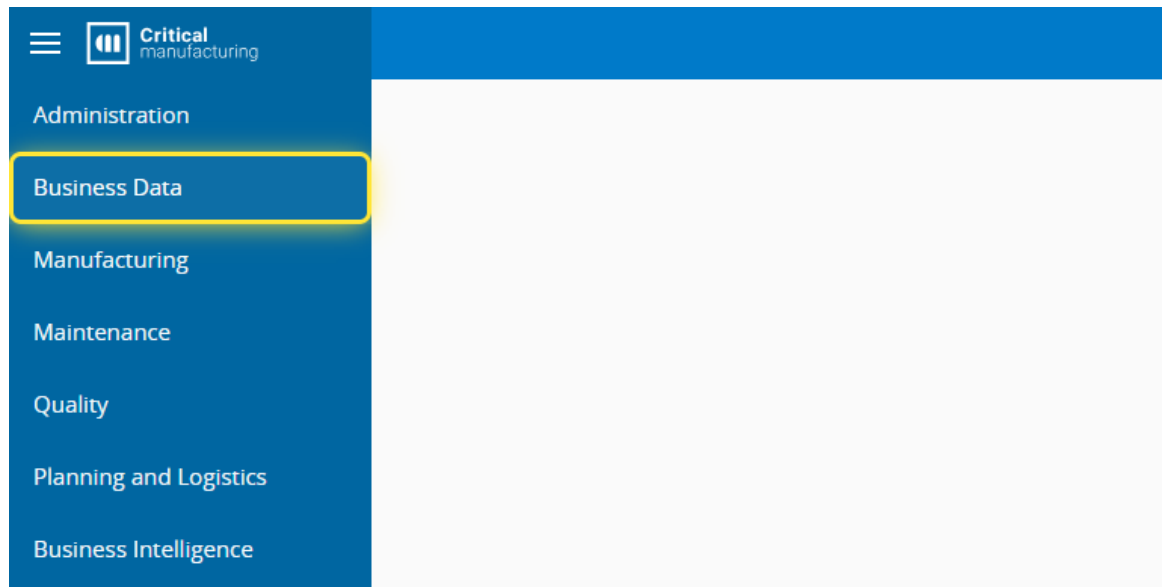


# How to: Manage BOM Items

1. Go to the Business Data menu.



2. Select the BOM entity.

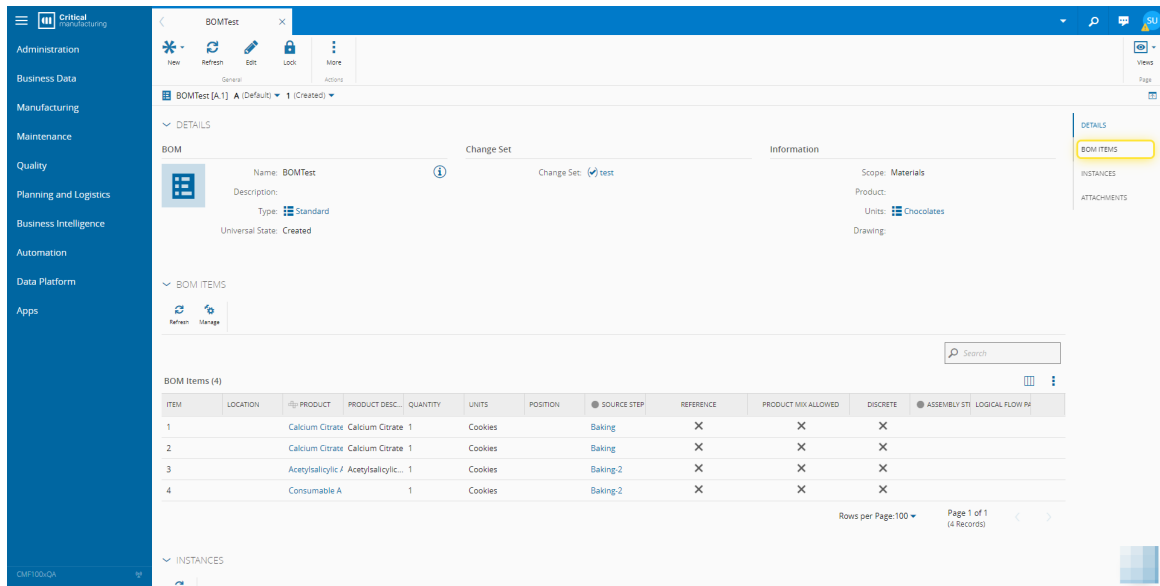


3. Select the BOM you need.

(BOMTest [A] for this example)

| NAME                         | DESCRIPTION                  |
|------------------------------|------------------------------|
| Acetylsalicylic Acid ABS [A] | Acetylsalicylic Acid ABS BOM |
| Acetylsalicylic Acid REL [A] | Acetylsalicylic Acid REL BOM |
| Belgas [A]                   | Belgas BOM                   |
| BOMTest [A]                  |                              |
| Durable [A]                  |                              |
| SMT [A]                      |                              |

#### 4. Select the BOM ITEMS section.



The screenshot shows the configuration page for BOMTest [A]. The 'BOM ITEMS' section is expanded, displaying a table with the following data:

| ITEM | LOCATION | PRODUCT                              | PRODUCT DESC.   | QUANTITY | UNITS   | POSITION | SOURCE STEP | REFERENCE | PRODUCT MIX ALLOWED | DISCRETE | ASSEMBLY ST | LOGICAL FLOW PH |
|------|----------|--------------------------------------|-----------------|----------|---------|----------|-------------|-----------|---------------------|----------|-------------|-----------------|
| 1    |          | Calcium Citrate                      | Calcium Citrate | 1        | Cookies |          | Baking      | X         | X                   | X        |             |                 |
| 2    |          | Calcium Citrate                      | Calcium Citrate | 1        | Cookies |          | Baking      | X         | X                   | X        |             |                 |
| 3    |          | Acetylsalicylic / Acetylsalicylic... |                 | 1        | Cookies |          | Baking:2    | X         | X                   | X        |             |                 |
| 4    |          | Consumable A                         |                 | 1        | Cookies |          | Baking:2    | X         | X                   | X        |             |                 |

#### 5. Select Manage.

For more information, see [Manage BOM Items - Critical Manufacturing Documentation Portal](#)

BOMTest [A.1] A (Default) 1 (Created)

BOM ITEMS

Refresh Manage

BOM Items (4)

| ITEM | LOCATION | PRODUCT           | PRODUCT DESC...    | QUANTITY | UNITS   | POSITION | SOURCE |
|------|----------|-------------------|--------------------|----------|---------|----------|--------|
| 1    |          | Calcium Citrate   | Calcium Citrate    | 1        | Cookies |          | Baking |
| 2    |          | Calcium Citrate   | Calcium Citrate    | 1        | Cookies |          | Baking |
| 3    |          | Acetylsalicylic A | Acetylsalicylic... | 1        | Cookies |          | Baking |

6. Add, remove or re-order as needed.

For this example, we are going to Add.

Manage BOM Items

BOM ITEMS SUBSTITUTES

BOMTest [A.1]

BOM Items

| PRODUCT   | QTY       |
|---|-----------|
| Calcium Citrate [A] (Calcium Citrate)<br><i>No Position</i>           | 1 Cookies |
| Calcium Citrate [A] (Calcium Citrate)<br><i>No Position</i>           | 1 Cookies |
| Acetylsalicylic Acid [A] (Acetylsalicylic Acid)<br><i>No Position</i> | 1 Cookies |
| Consumable A [A]<br><i>No Position</i>                                | 1 Cookies |

BOM Items Details

\* Product: Calcium Citrate [A]

Product Description: Calcium Citrate

\* Quantity: 1

Units: Cookies

Location:

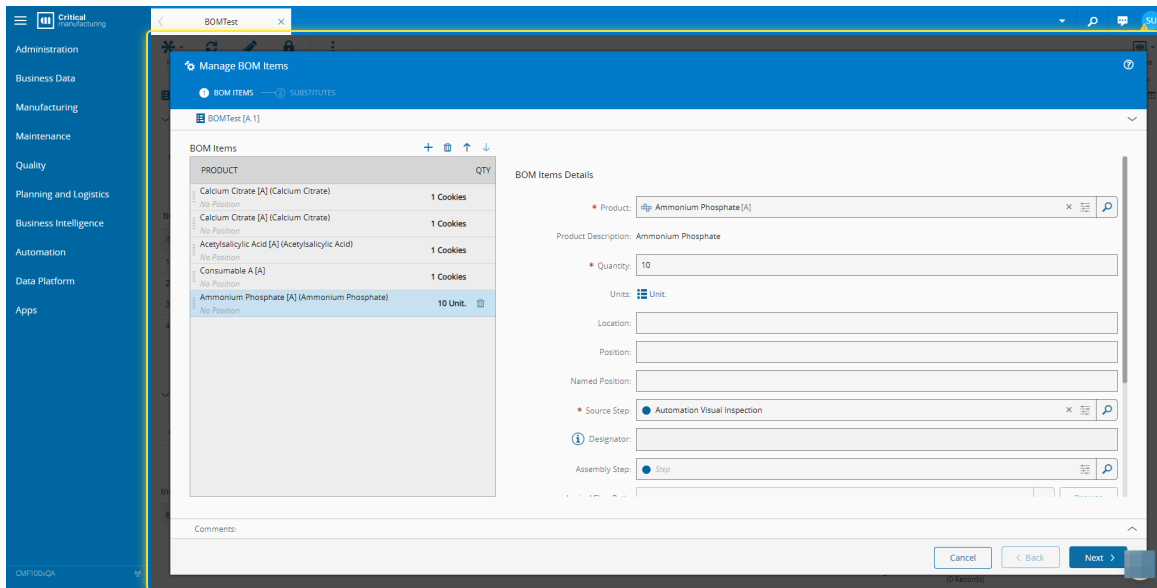
Position:

Named Position:

\* Source Step: Baking

Designator:

7. Enter the necessary information and select Next.



8. Add the necessary information for the Substitute Products if needed and then select Update.

