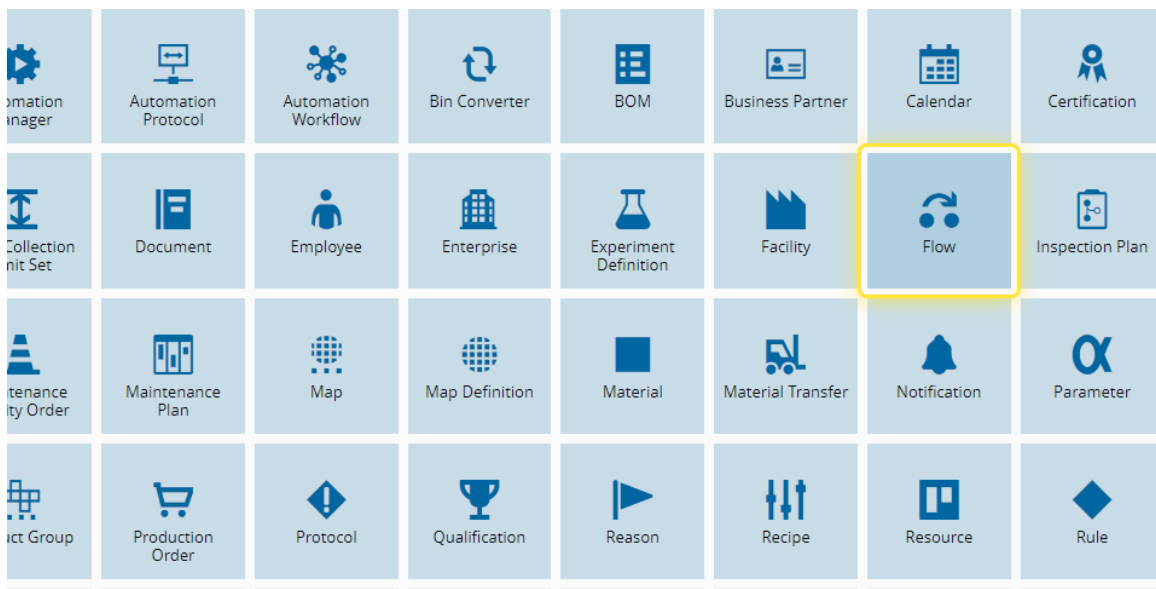


# How to: Manage an Off-Flow

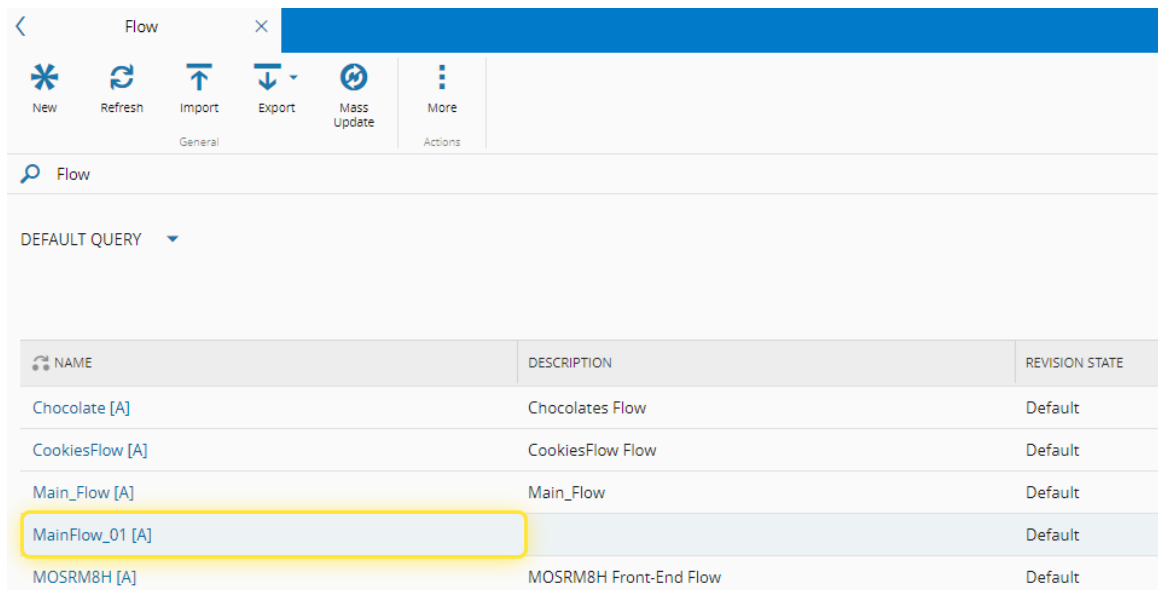
1. Go to the Business Data menu.



2. Select the Flow entity.



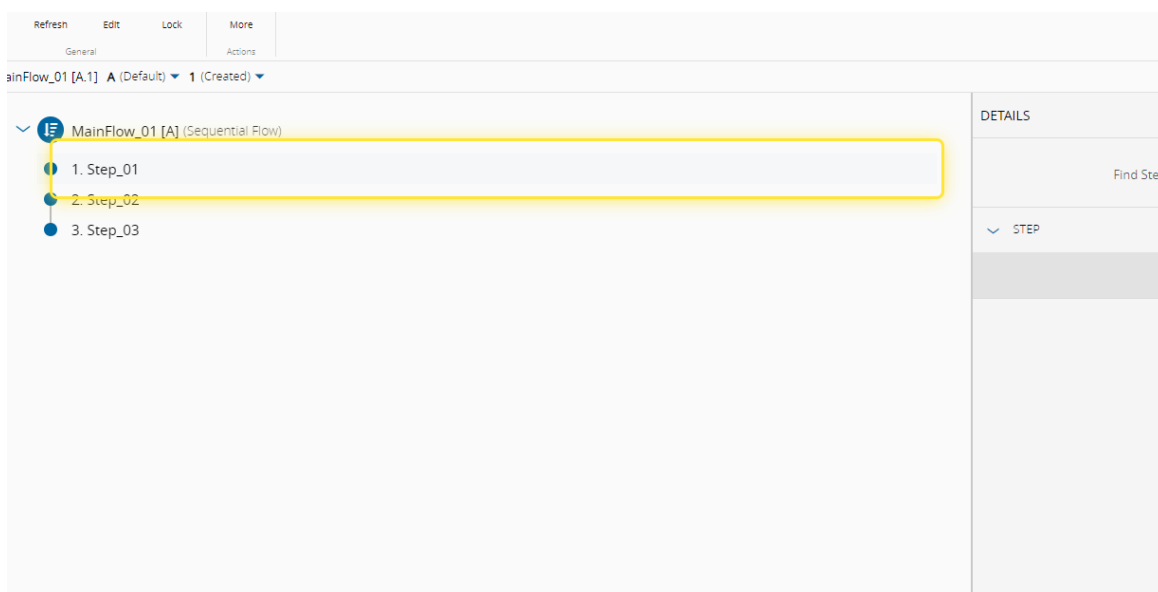
3. Select the Flow you want to use.



NAME	DESCRIPTION	REVISION STATE
Chocolate [A]	Chocolates Flow	Default
CookiesFlow [A]	CookiesFlow Flow	Default
Main_Flow [A]	Main_Flow	Default
MainFlow_01 [A]		Default
MOSRM8H [A]	MOSRM8H Front-End Flow	Default

4. Select the Step for Rework.

For more information, see [Create Flow - Critical Manufacturing Documentation Portal](#)



Refresh Edit Lock More

General Actions

MainFlow\_01 [A.1] A (Default) 1 (Created)

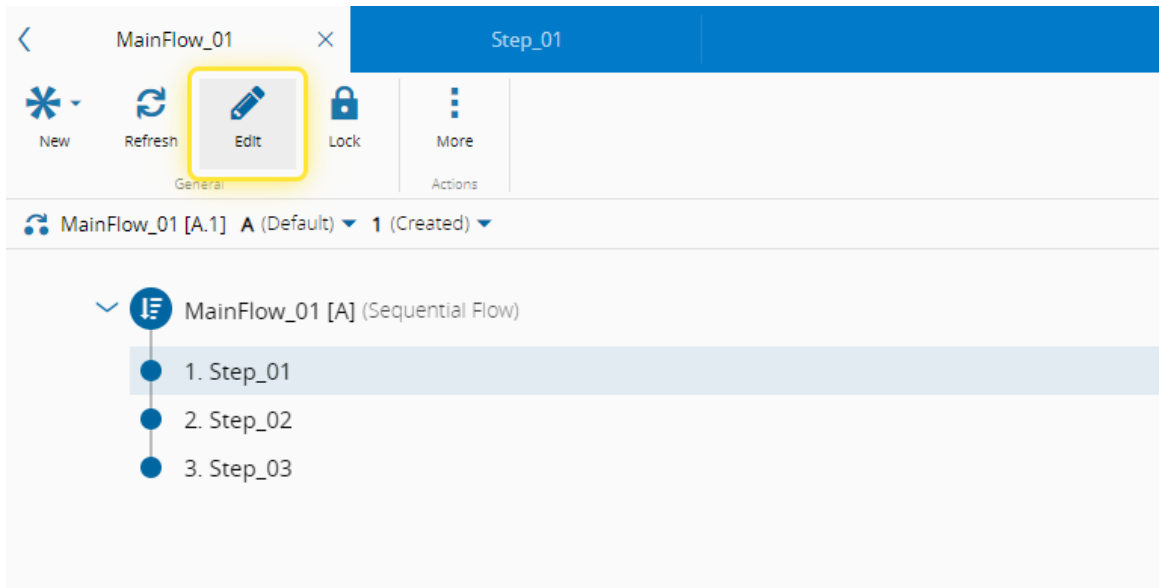
- MainFlow\_01 [A] (Sequential Flow)
  - 1. Step\_01
  - 2. Step\_02
  - 3. Step\_03

DETAILS

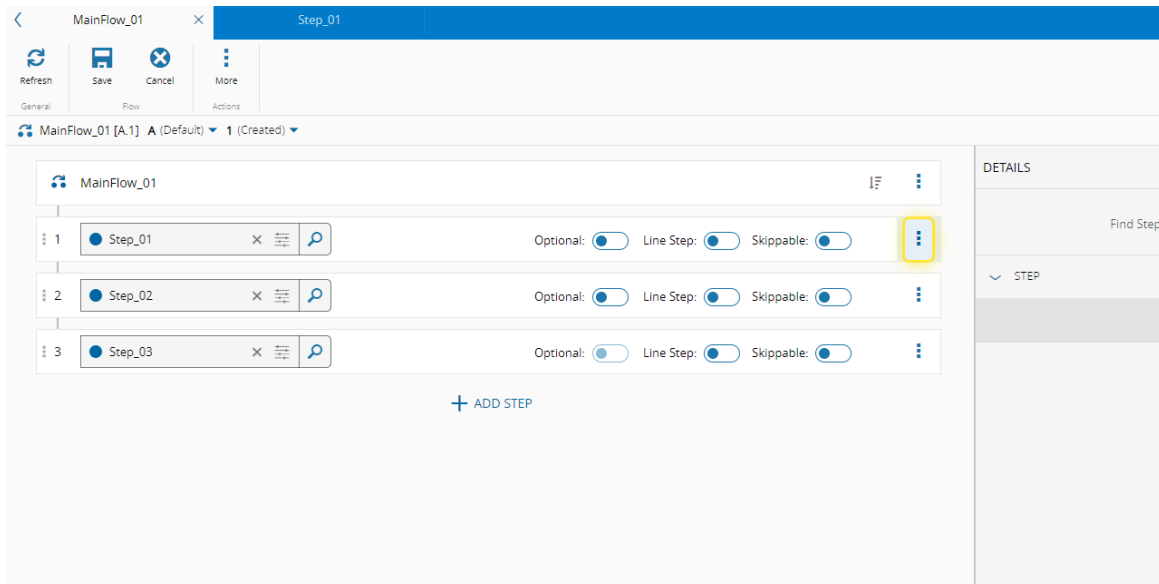
Find Step

STEP

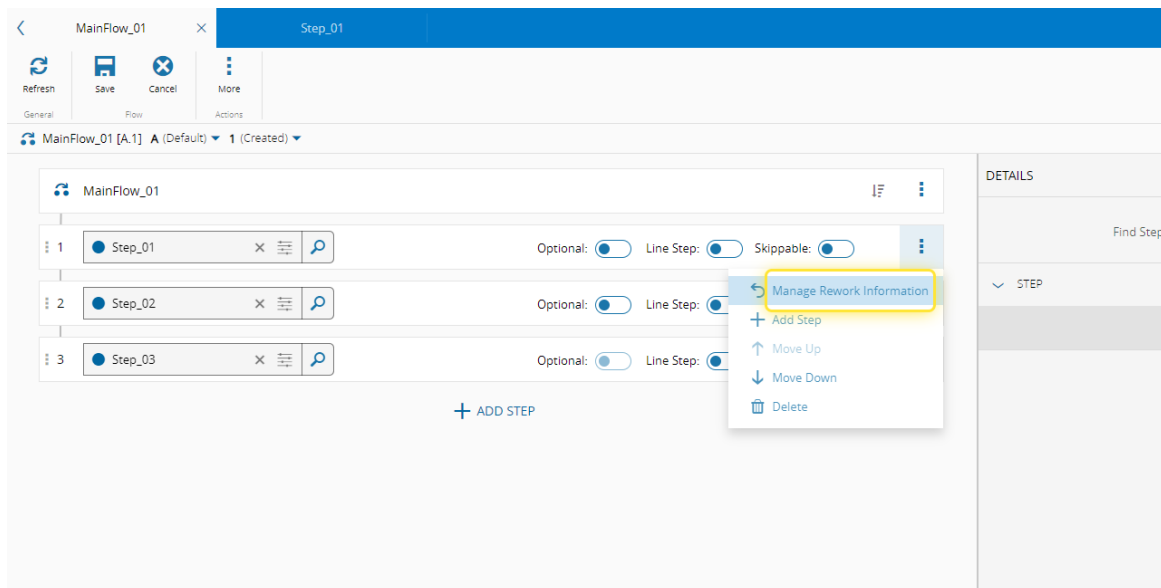
5. Select the Edit button.



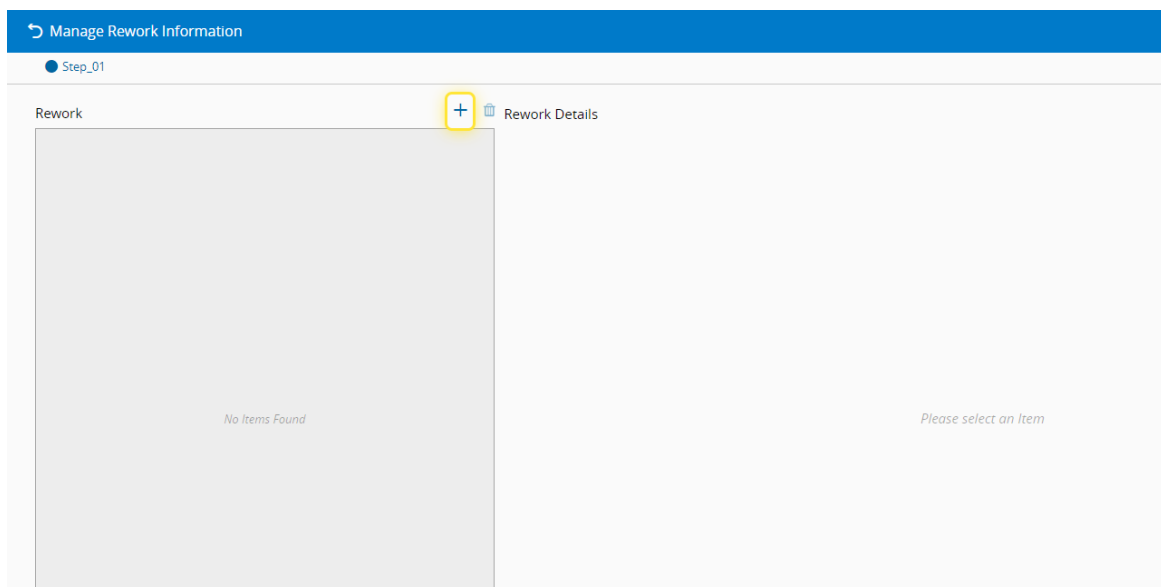
6. Select the More action.



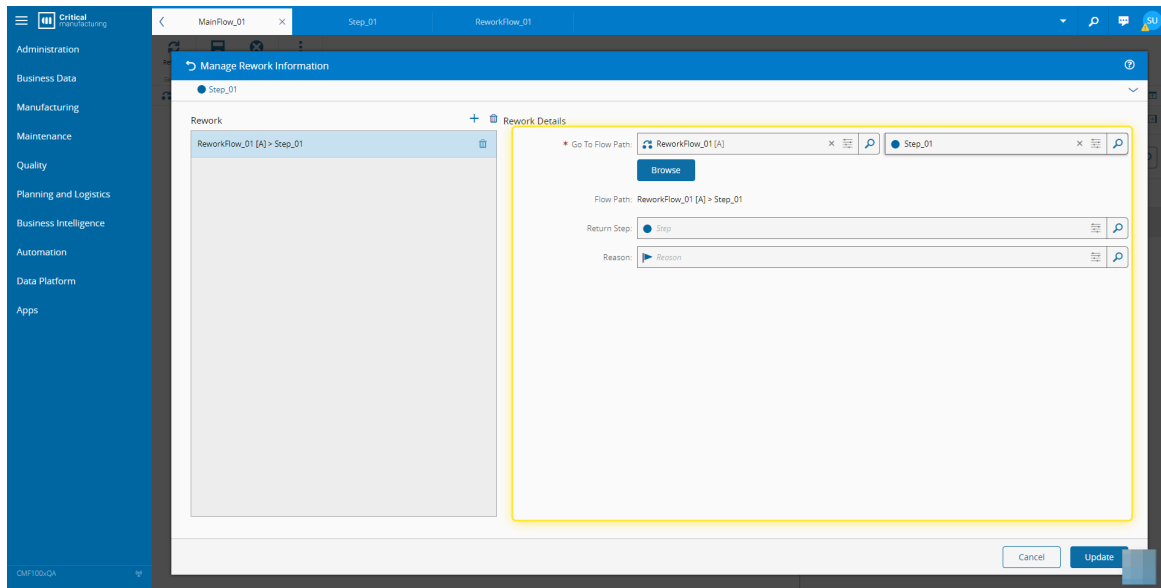
7. Select the Manage Rework Information option.



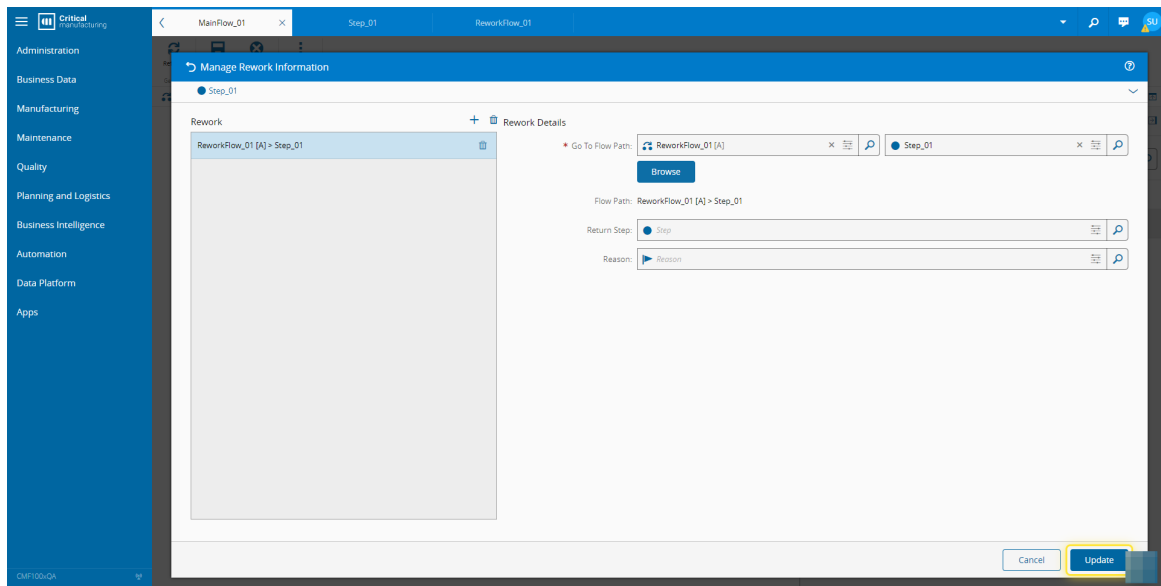
8. Select + to add Rework path to the Step.



9. Complete the necessary fields.



10. Select the Update button.



11. Select Save to update the Flow.

The screenshot displays a software interface for configuring a flow process. At the top, there are tabs for 'MainFlow\_01', 'Step\_01', and 'ReworkFlow\_01'. Below the tabs is a toolbar with 'Refresh', 'Save', 'Cancel', and 'More' buttons. The 'Save' button is highlighted with a yellow box. Below the toolbar, the main area shows a list of steps under the heading 'MainFlow\_01'. The steps are numbered 1, 2, and 3, corresponding to 'Step\_01', 'Step\_02', and 'Step\_03'. Each step has a search icon, a close icon, and three toggle switches for 'Optional', 'Line Step', and 'Skippable'. A '+ ADD STEP' button is located at the bottom of the list. On the right side, there is a 'DETAILS' panel for the selected step. It includes a 'Find Step' button, a 'STEP' section, a 'General Data' section, and a 'Rework 1' section. The 'General Data' section includes fields for 'Step:', 'Description:', 'Optional:', 'Line Step:', 'Skippable:', and 'Rework:'. The 'Rework 1' section includes a 'Go to Flow Path:' field.