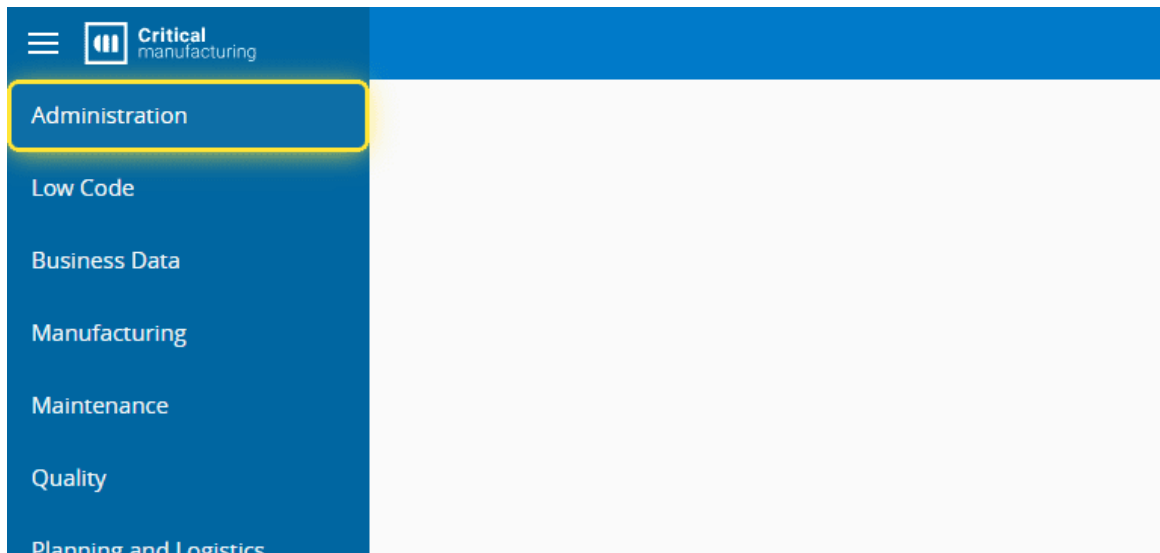
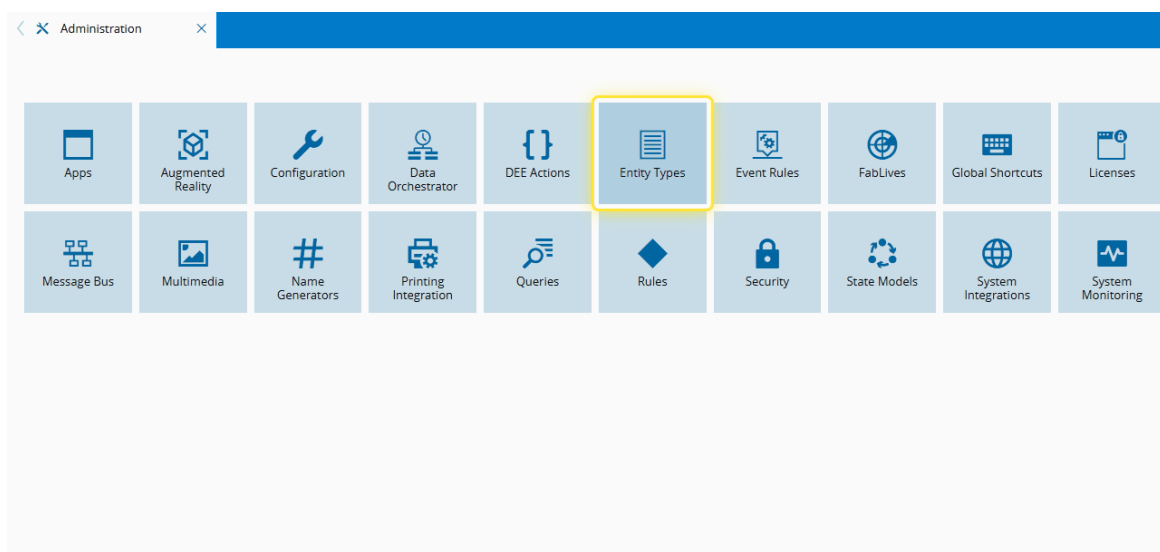


## How to: Add an attribute to an Entity

1. Go to the Administration menu.



2. Select the Entity Types option.



3. Select the Entity you need.

Entity Types

Create Refresh Export Download LBOs

Entity Types

Entity Types (367)

ENTITY TYPE	DESCRIPTION	SYSTEM	RELATION	VERSIONED
AutomationTasksLibrary	An Automation Task Library is a set of me...	✓	✗	✗
AutomationWorkflow	This object represents the available auto...	✓	✗	✗
AutoMLNET	AutoMLNET	✓	✗	✗
Batch	Batch	✓	✗	✗
BinConversion	This is an object that represents a single b...	✓	✗	✗
BinConverter	This is an object that represents a set of b...	✓	✗	✗
<b>BOM</b>	BOM Object	✓	✗	✓
BOMInstance	BOM Instance Object	✓	✗	✗
BOMInstanceltem	BOM Instance Item Object	✓	✗	✗

#### 4. Select the ATTRIBUTES section.

BOM

Refresh Edit Export Generate

BOM (Active)

DETAILS

General Data

Name: BOM  
Description: BOM Object  
System: ✓ Yes  
Universal State: Active

Relation

Relation: ✗ No  
Lock Type: Lock None  
Clone Behavior: No Copy

Instances

Versioned: ✓ Yes  
Allow Automatic Change Set: ✗ No  
Make Change Set Items: ✗ No  
Effective on Approval: ✗ No  
Change Set Name Generator:  
Approval:  
Notify Requester: ✗ No  
Notify Approvers: ✗ No  
Use Change Set Approval: ✗ No  
Content:  
Enable Automatic Approval: ✗ No  
Display Change Set on Clone: ✗ No  
Allow Delete Instances: ✗ No  
Enable Default Revision Dates: ✗ No  
Enable Version Creation: ✓ Yes

Flags

Licensed: ✓ Yes  
Unique Name Required: ✓ Yes  
Replicate to OOS: ✓ Yes

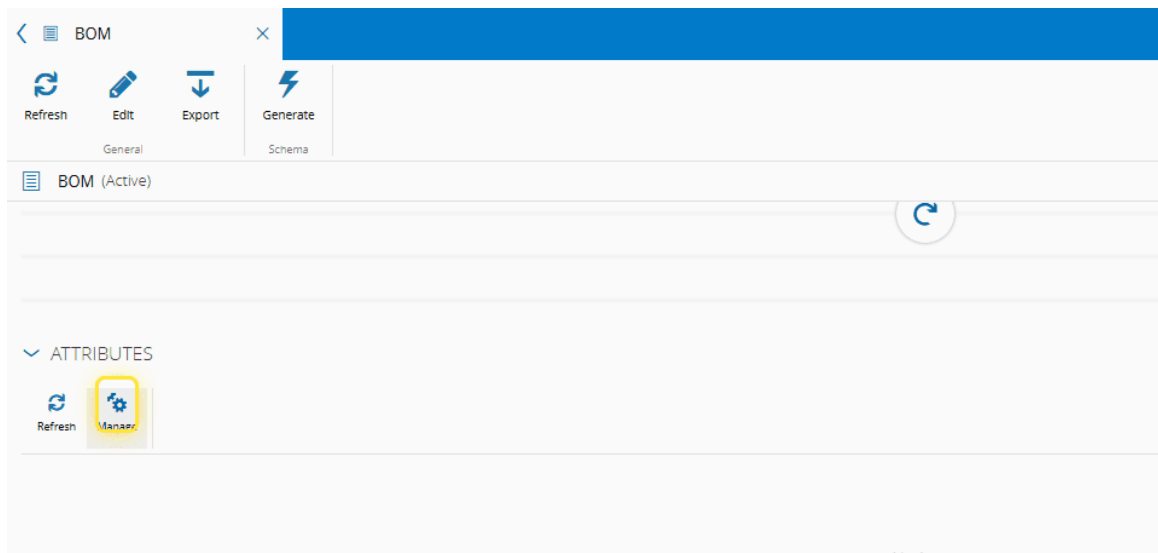
Information

History Retention Time: 30 days  
History Default Interval: 180 days  
Purge Type: Generic

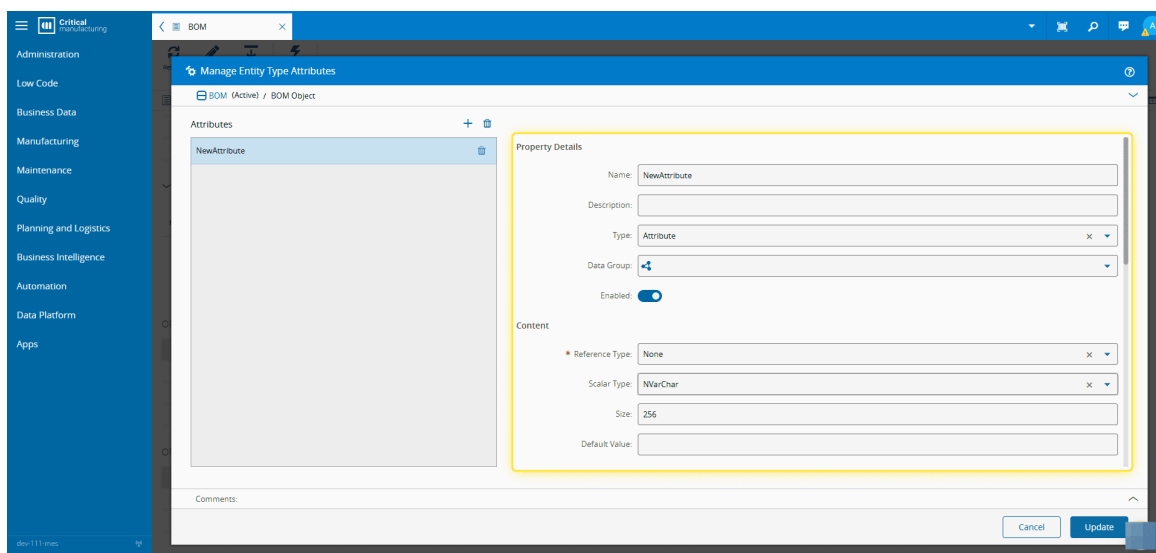
DETAILS  
STATE MODELS  
PROPERTIES  
**ATTRIBUTES**  
OPERATIONS  
ATTRIBUTES

#### 5. Select Manage.

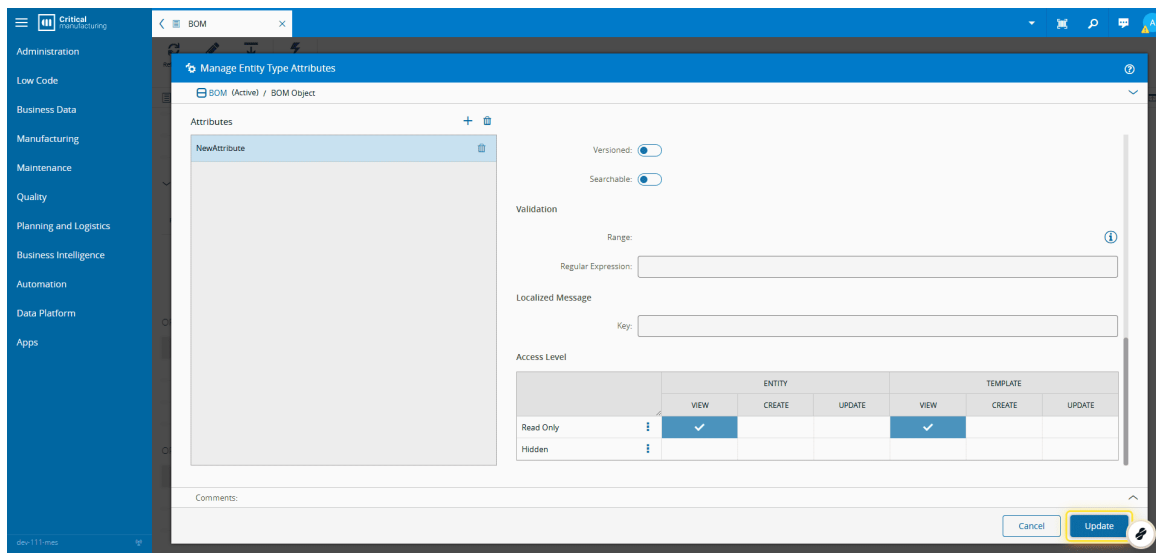
For more information, see [Manage Entity Type Attributes - Critical Manufacturing Documentation Portal](#).



6. Add, remove or re-order as needed.

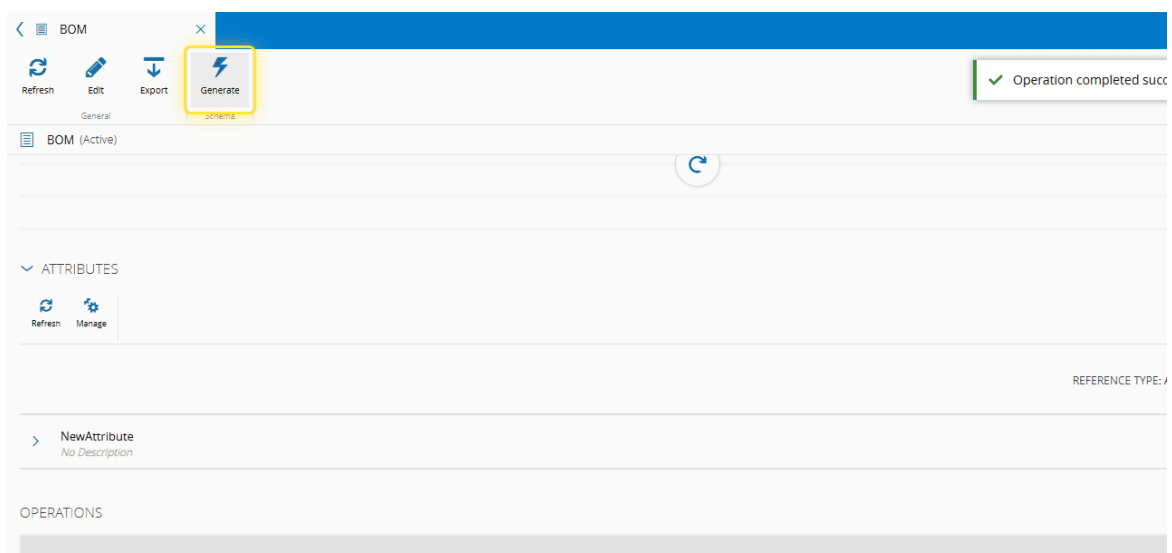


7. Select Update.



## 8. Select Generate.

For more information, see [Generating an Entity Type Schema - Critical Manufacturing Documentation Portal](#).



## 9. Select Generate.

