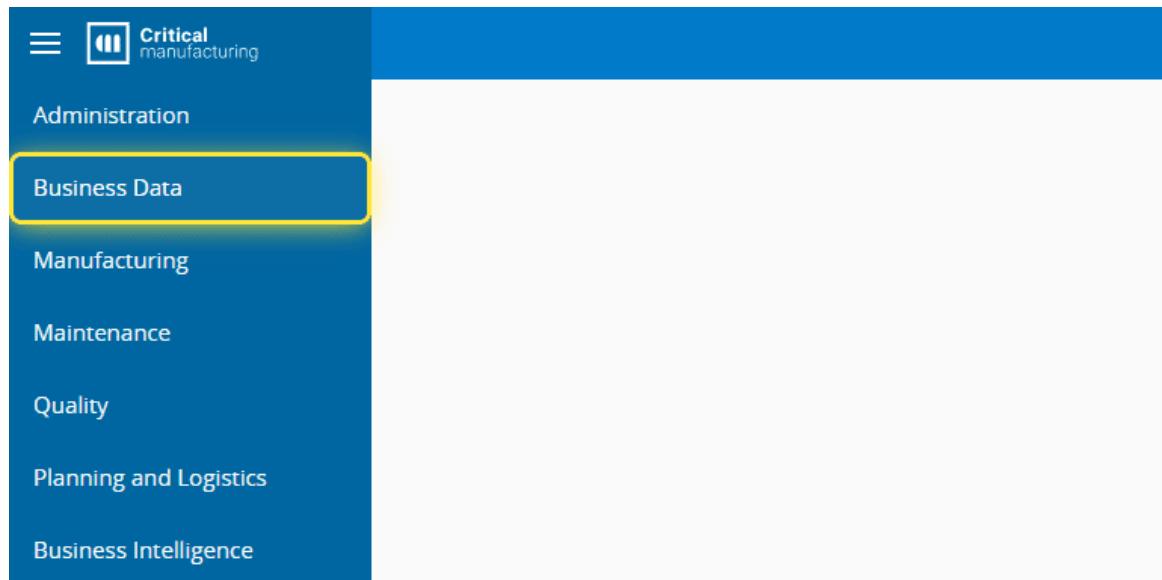
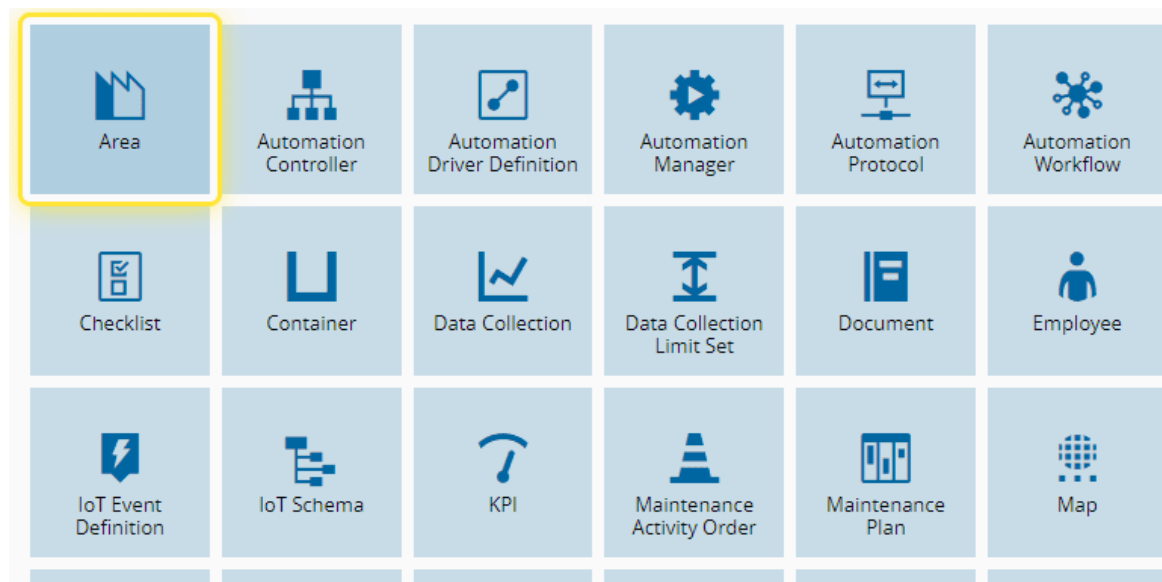


How to: Clone an Object

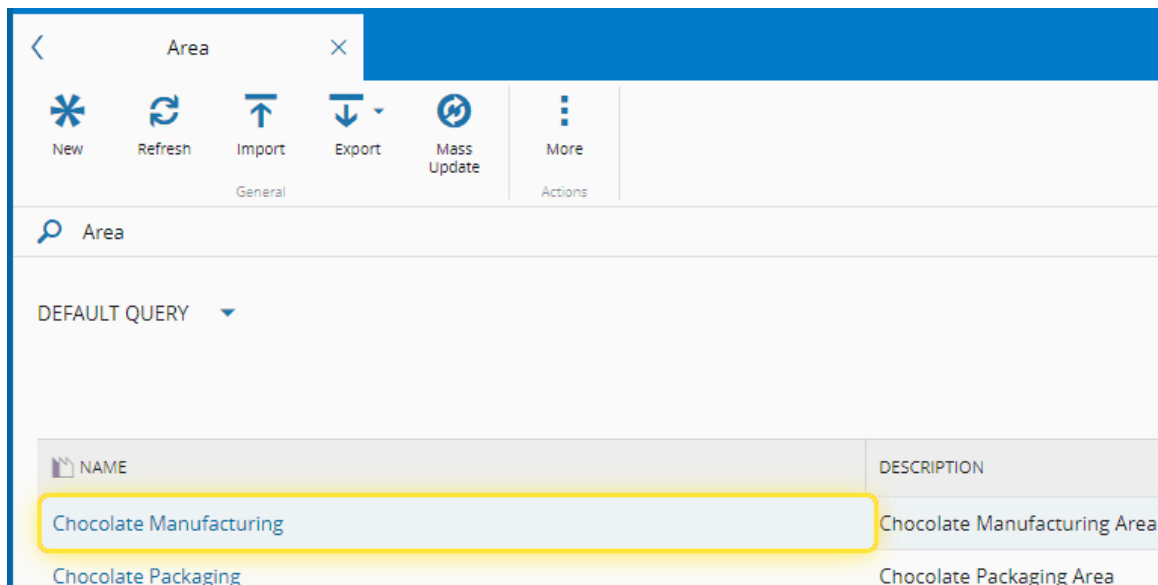
1. Go to the Business Data menu.



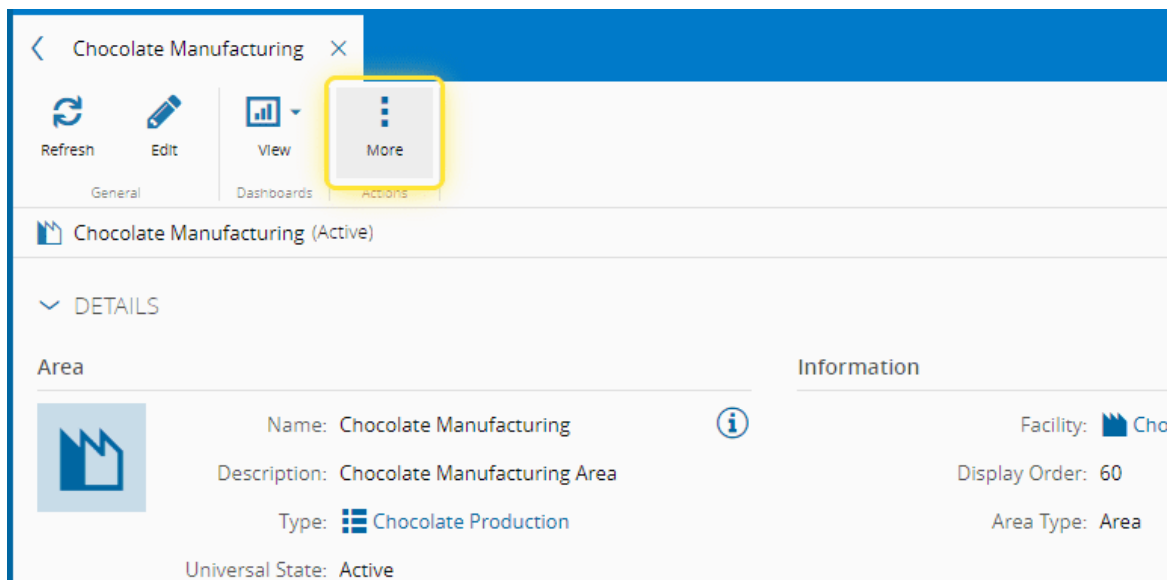
2. Select the Entity of the object to be cloned.



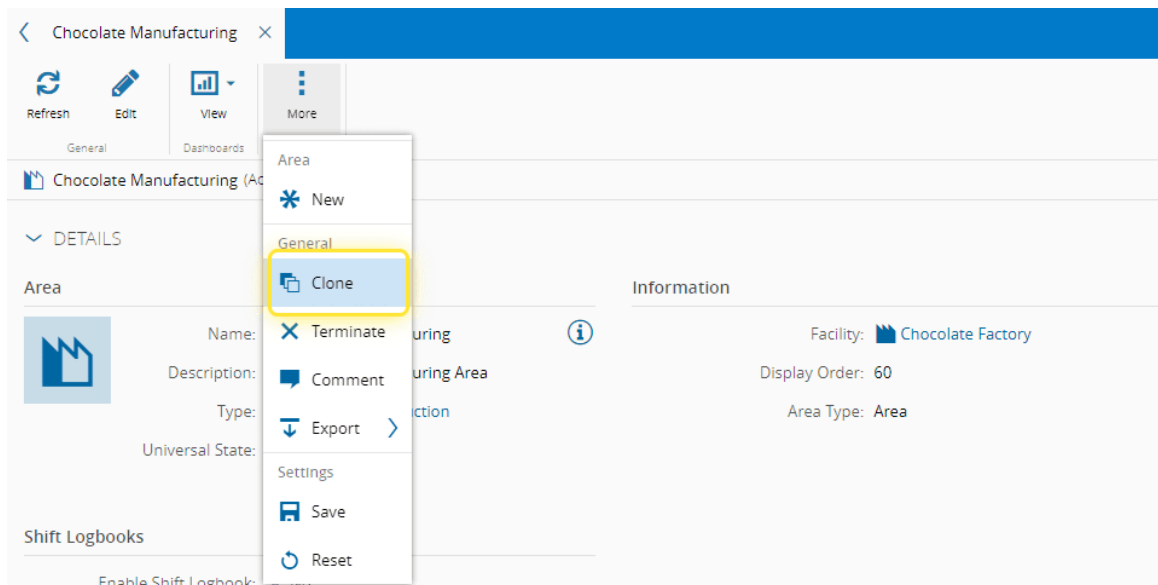
3. Select an object.



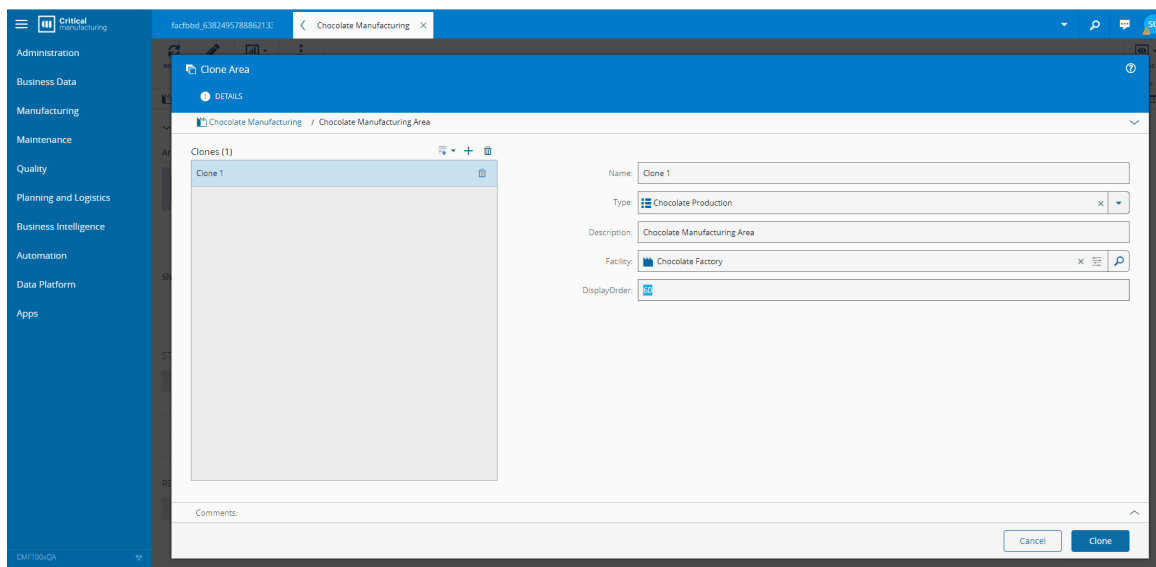
4. Select the More button.



5. Select the Clone option.



6. Complete the necessary fields.



7. Select the Clone button.

Critical manufacturing

Administration

Business Data

Manufacturing

Maintenance

Quality

Planning and Logistics

Business Intelligence

Automation

Data Platform

Apps

Chocolate Manufacturing

Chocolate Manufacturing

Clone Area

DETAILS

Chocolate Manufacturing / Chocolate Manufacturing Area

Clones (1)

Clone 1

Name: Clone 1

Type: Chocolate Production

Description: Chocolate Manufacturing Area

Facility: Chocolate Factory

DisplayOrder: 20

Comments:

Cancel

Clone