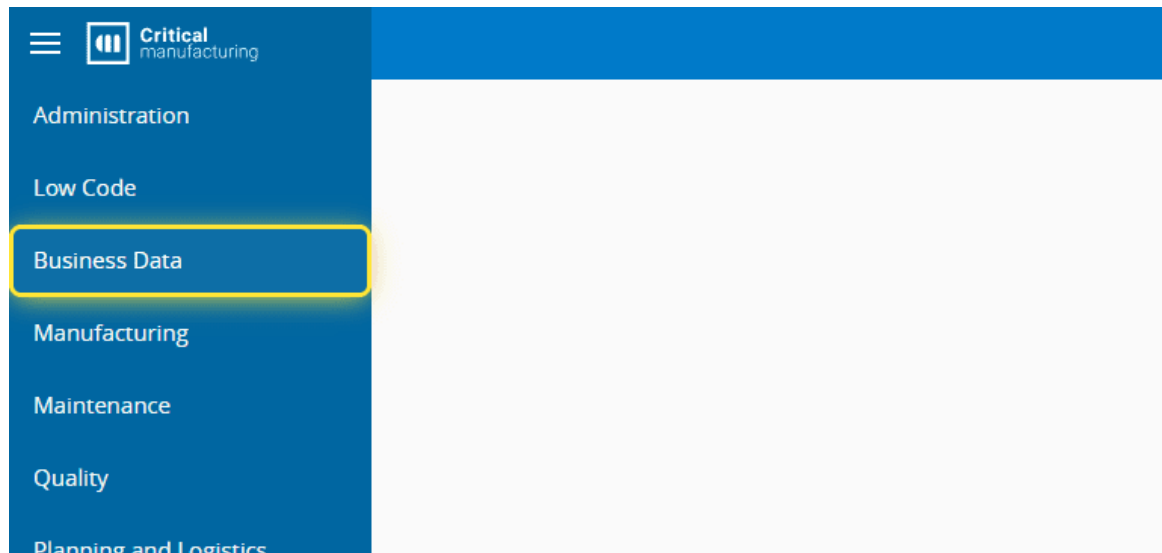
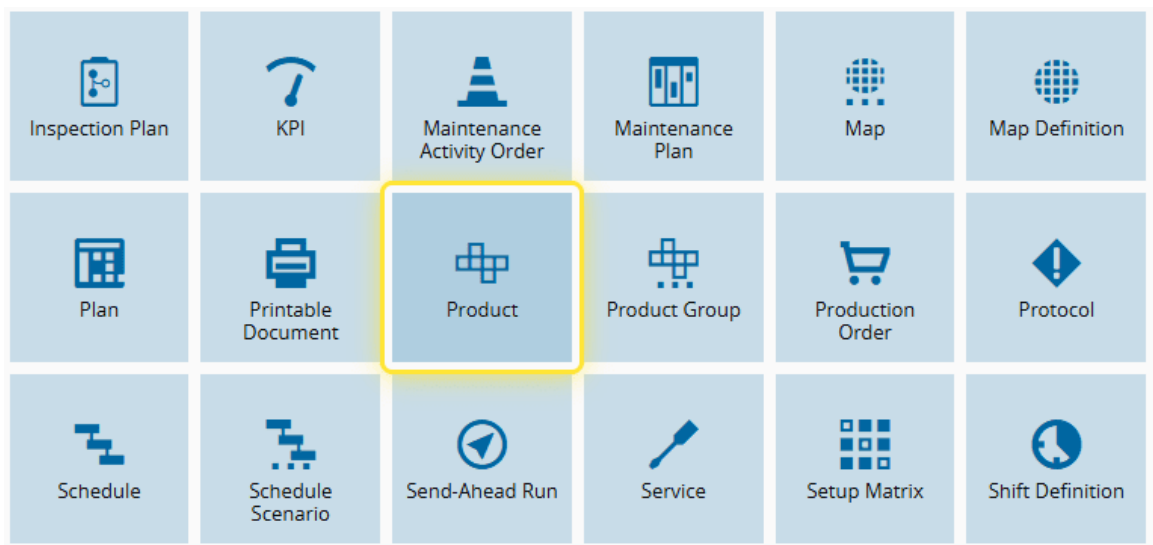


How to: Manage Product Manufacturers

1. Go to the Business Data menu.



2. Select the Product entity.



3. Select the Product you need.

Product

General Actions

Product

DEFAULT QUERY

REVISION

NAME	DESCRIPTION	REVISION STATE	UNIV
Print Paste AVCO [A]		Default	Effect
Reel 14.2x8.3 [A]		Default	Effect
Reel 15.5x9.1 [A]		Default	Effect
Reel Box 450X350X300 [A]		Default	Effect
Reel Box 500X400X350 [A]		Default	Effect
Reticle Layer AZ#2EDN7524F [A]		Default	Effect
Reticle Layer AZ#2EDN8524F* [A]		Default	Effect
Reticle Layer AZ#2EGN7523G* [A]		Default	Effect

4. Select the PRODUCT MANUFACTURERS section.

Blade 0.12

Product

Name: Blade 0.12

Description:

Type: Durable

Universal State: Created

Change Set: aecbedeebbac_638825513756537329

Information

Default Start Flow Path: Kanban Sawing [A] > Kanban Sawing

Product Type: Durable

Product Group Description:

Default Units: Unit

Default Material Type: Durable

Default Material Form: Durable

Default BOM:

Substrate Map:

Maturity:

Capacity Class:

Moisture Sensitivity Level:

Floor Life:

Enabled: Yes

Blocked: No

Discrete: Yes

Requires Bin Code: No

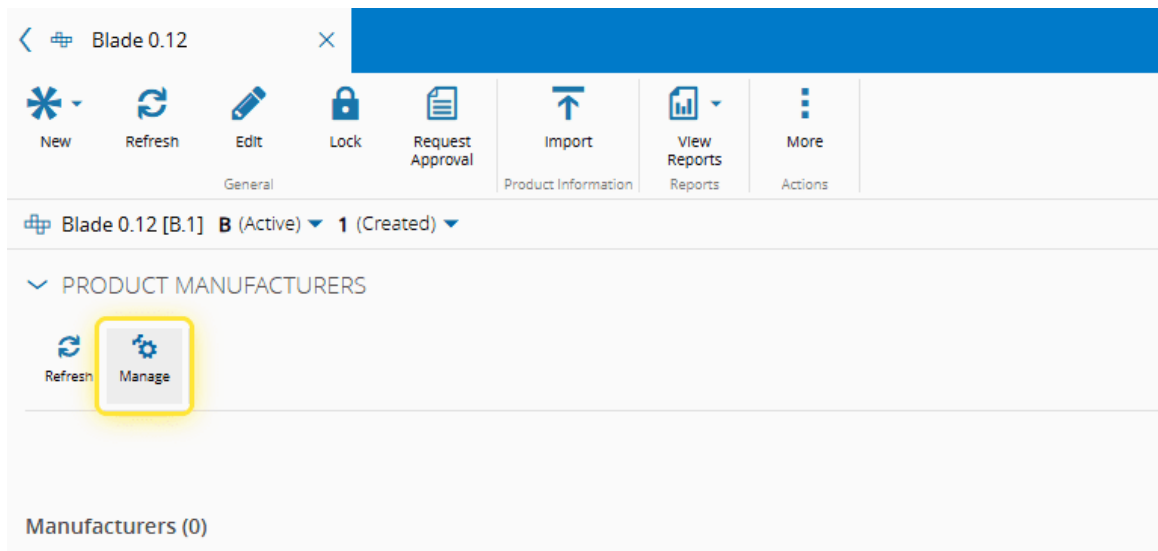
PRODUCT MANUFACTURERS

5. Select Manage.

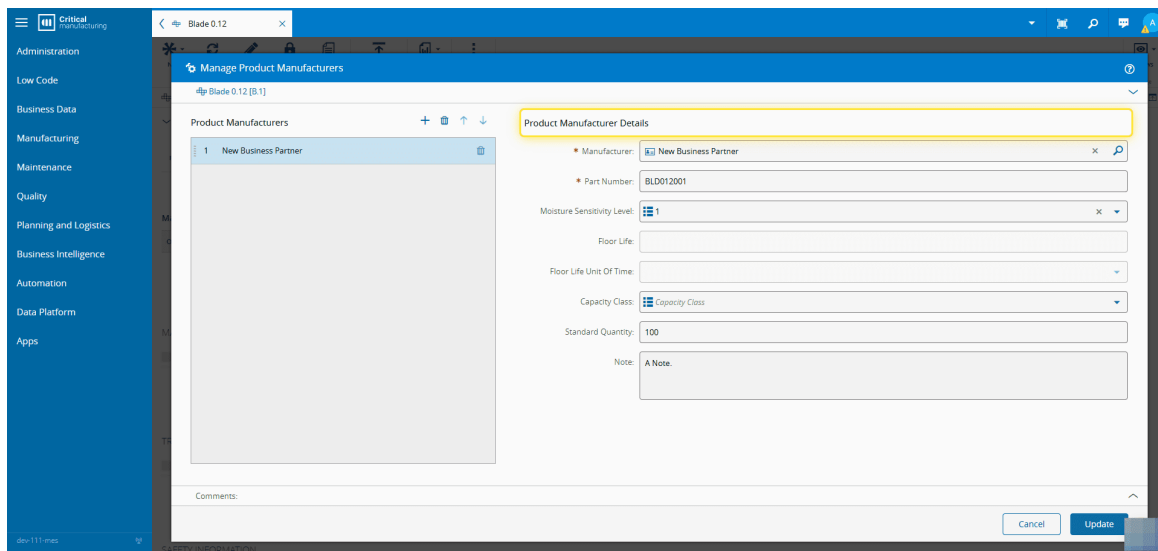
For more information, see [Manage Product Manufacturers - Critical Manufacturing Documentation Portal](#).



This option is only available for Products of type: Durable, Part and Raw Material.



6. Add, remove or re-order as needed.



7. Enter the necessary information and select Next.

Critical manufacturing

Administration

Low Code

Business Data

Manufacturing

Maintenance

Quality

Planning and Logistics

Business Intelligence

Automation

Data Platform

Apps

Blade 0.12

Manage Product Manufacturers

Blade 0.12 [B.1]

Product Manufacturers

1 New Business Partner

Product Manufacturer Details

Manufacturer: New Business Partner

Part Number: BLD012001

Moisture Sensitivity Level: 1

Floor Life:

Floor Life Unit Of Time:

Capacity Class: Capacity Class

Standard Quantity: 100

Note: A Note

Comments:

Cancel Update