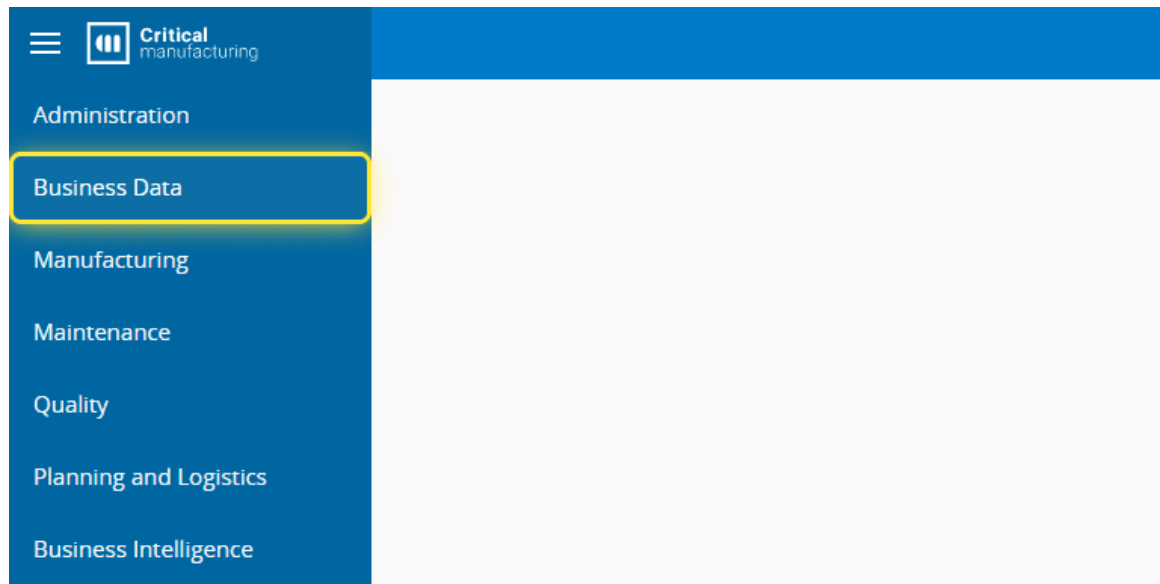
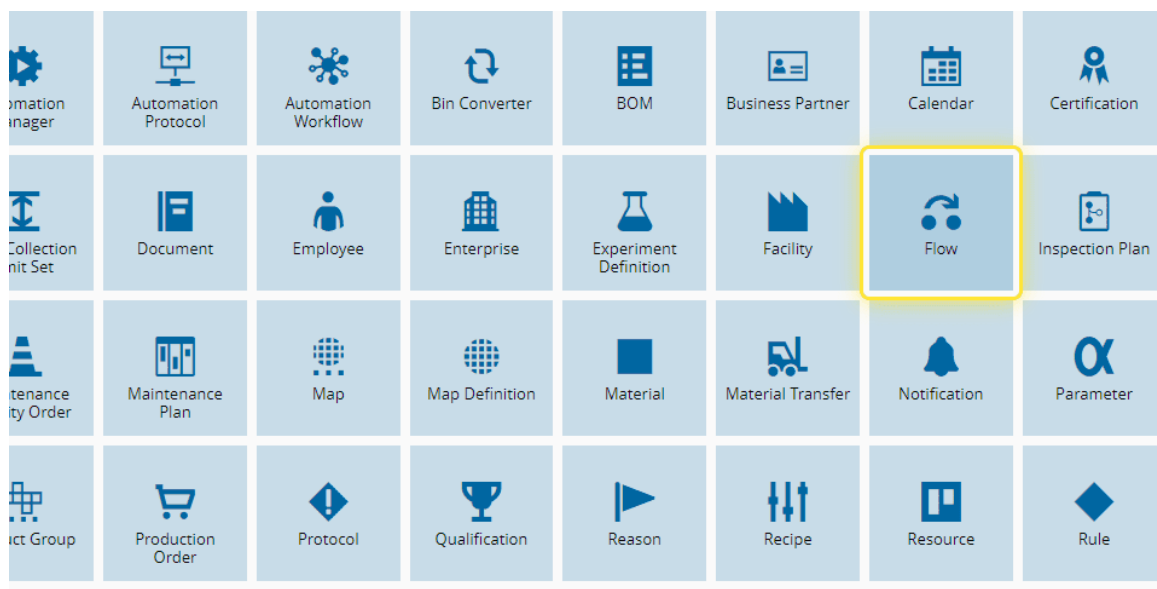


# How to: Manage an Off-Flow

1. Go to the Business Data menu.



2. Select the Flow entity.



3. Select the Flow you want to use.

Flow

[New](#)
[Refresh](#)
[Import](#)
[Export](#)
[Mass Update](#)
[More](#)

Flow

DEFAULT QUERY ▾

NAME	DESCRIPTION	REVISION STATE
Chocolate [A]	Chocolates Flow	Default
CookiesFlow [A]	CookiesFlow Flow	Default
Main_Flow [A]	Main_Flow	Default
MainFlow_01 [A]		Default
MOSRM8H [A]	MOSRM8H Front-End Flow	Default

#### 4. Select the Step for Rework.

For more information, see [Create Flow - Critical Manufacturing Documentation Portal](#)

[Refresh](#)
[Edit](#)
[Lock](#)
[More](#)

[MainFlow\\_01 \[A,1\]](#)
[A \(Default\)](#)
[1 \(Created\)](#)

[MainFlow\\_01 \[A\] \(Sequential Flow\)](#)

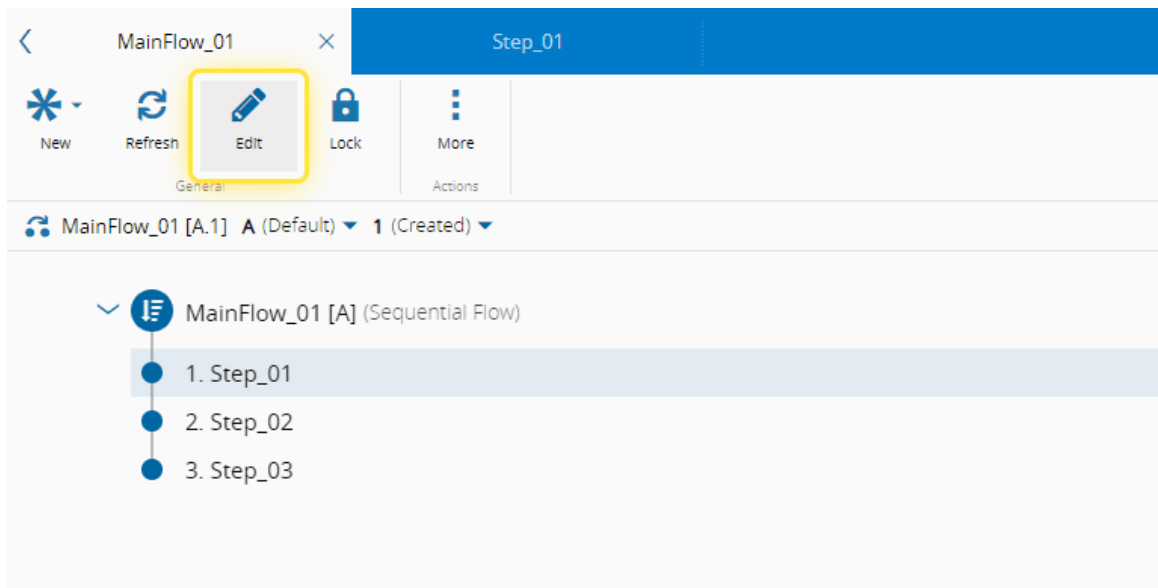
[1. Step\\_01](#)
[2. Step\\_02](#)
[3. Step\\_03](#)

DETAILS

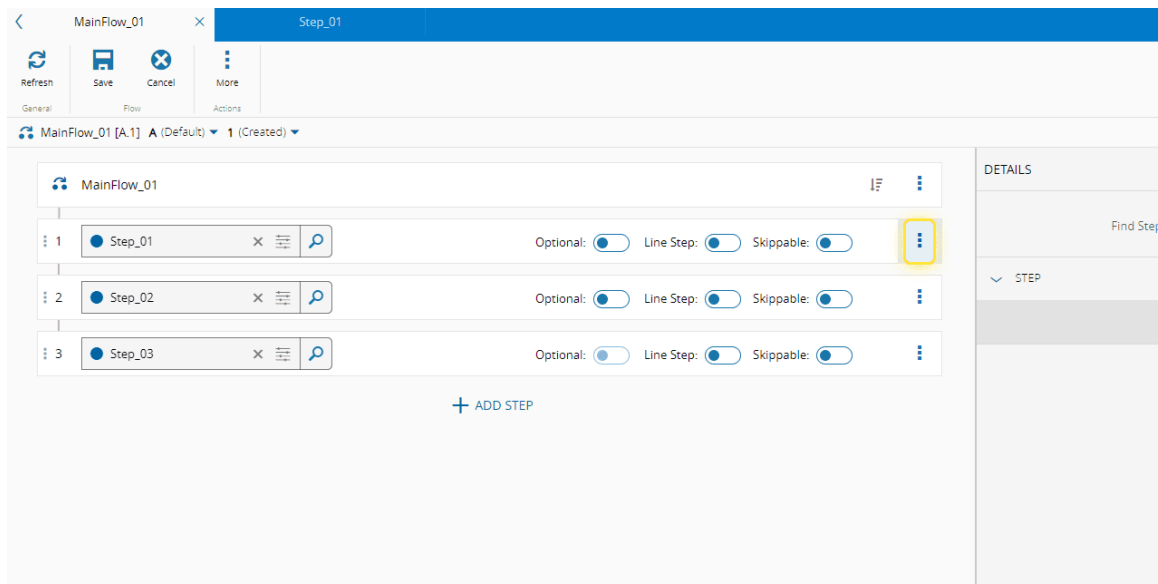
Find Step

STEP

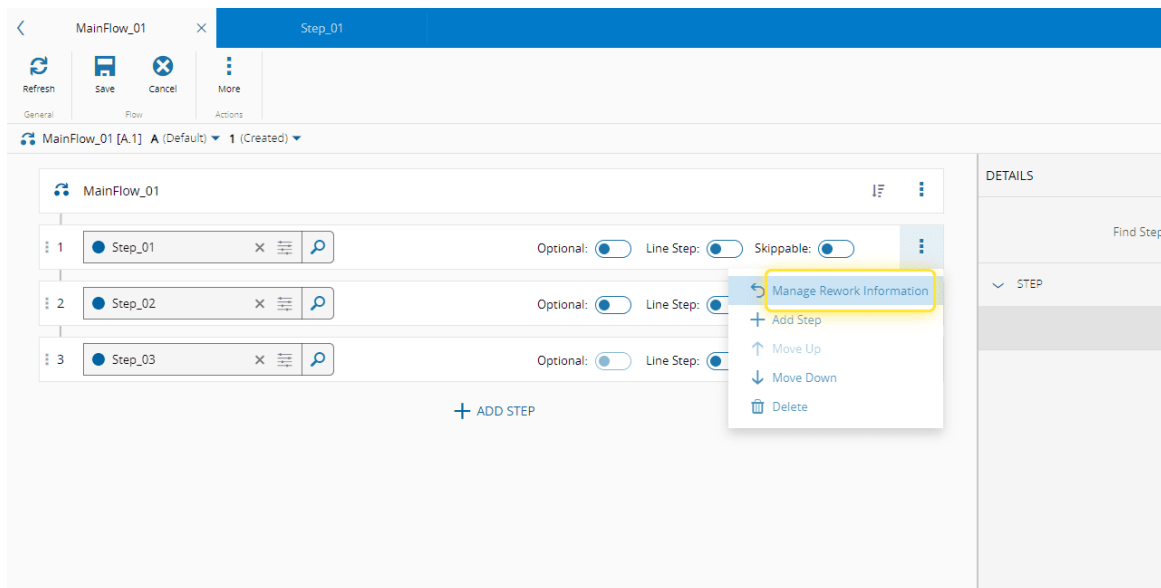
#### 5. Select the Edit button.



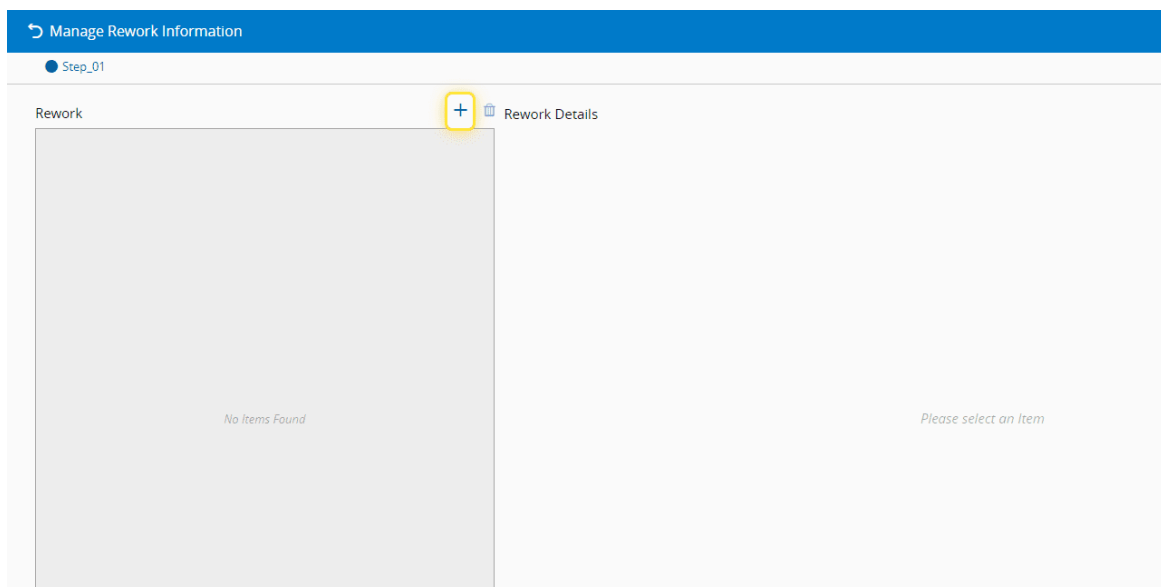
6. Select the More action.



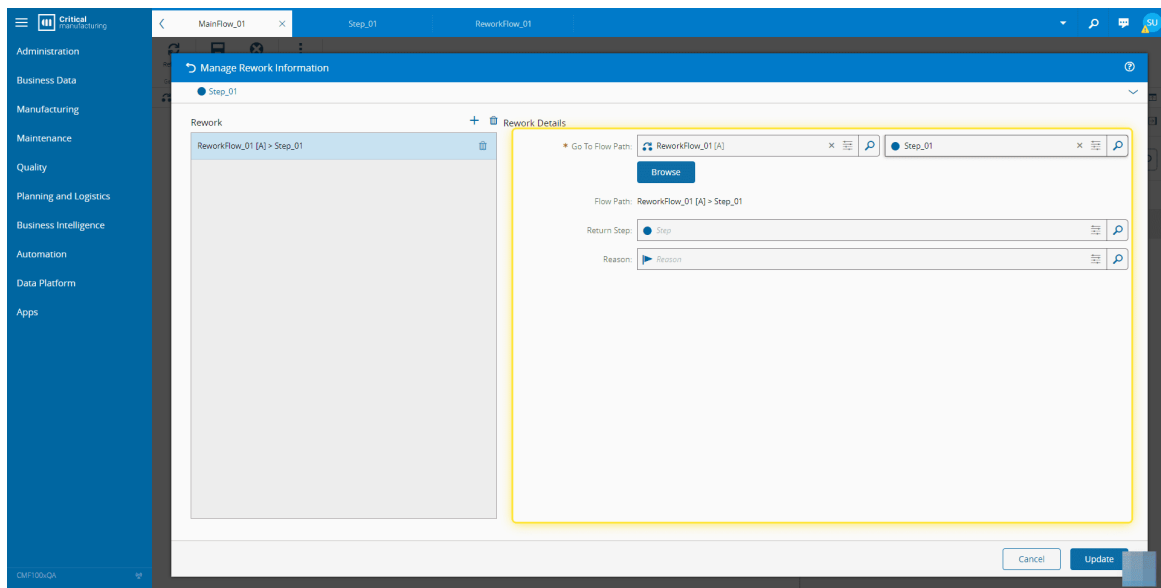
7. Select the Manage Rework Information option.



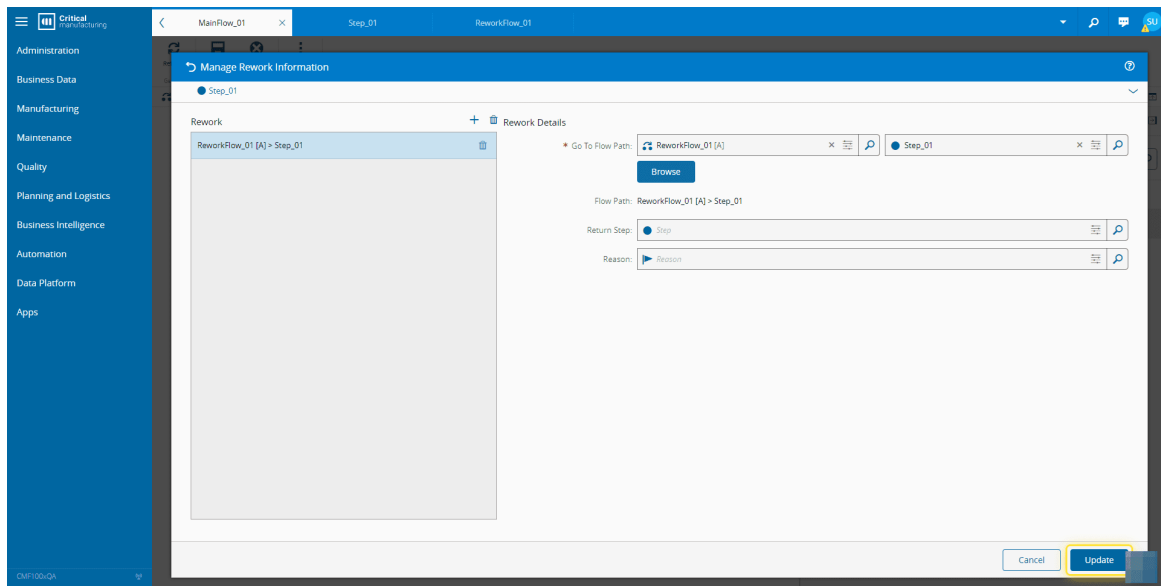
8. Select + to add Rework path to the Step.



9. Complete the necessary fields.



10. Select the Update button.



11. Select Save to update the Flow.

[illegible]