



Critical
manufacturing
an ASM PT company

How to: Manage Product Manufacturers

11.3

April 2026

DOCUMENT ACCESS

Public

DISCLAIMER

The contents of this document are under copyright of Critical Manufacturing S.A. it is released on condition that it shall not be copied in whole, in part or otherwise reproduced (whether by photographic, or any other method) and the contents therefore shall not be divulged to any person other than that of the addressee (save to other authorized offices of his organization having need to know such contents, for the purpose for which disclosure is made) without prior written consent of submitting company.

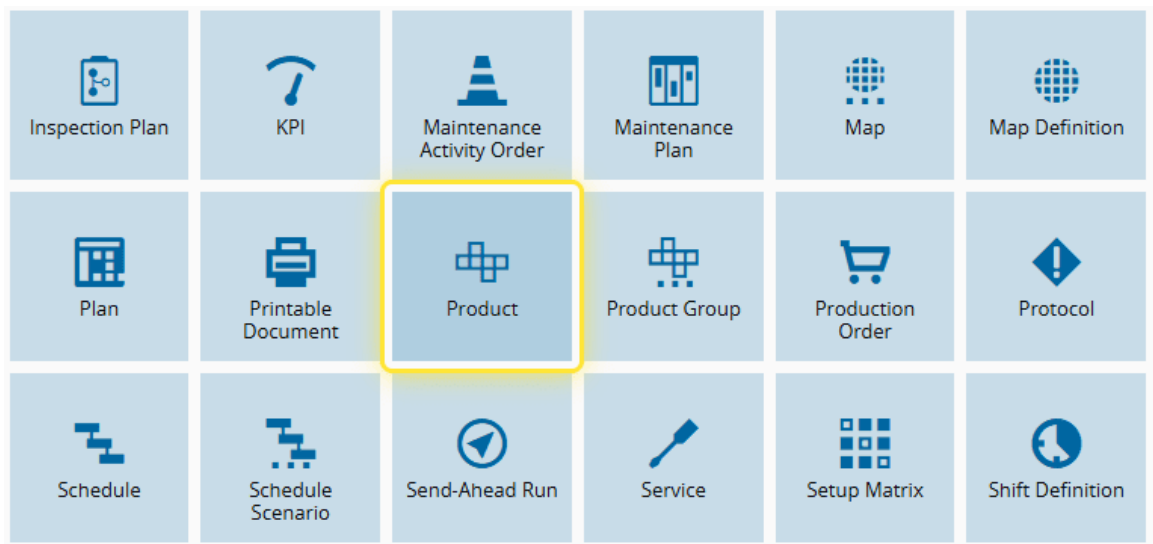
Home Tutorials All Guides Modules Material Logistics How to

How to: Manage Product Manufacturers

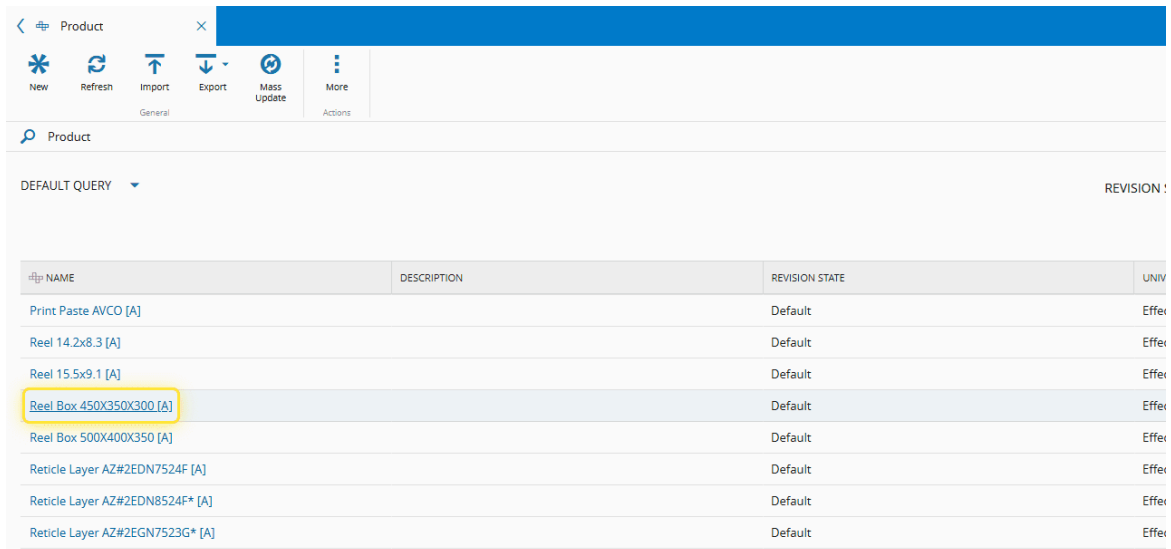
1. Go to the Business Data menu.



2. Select the Product entity.

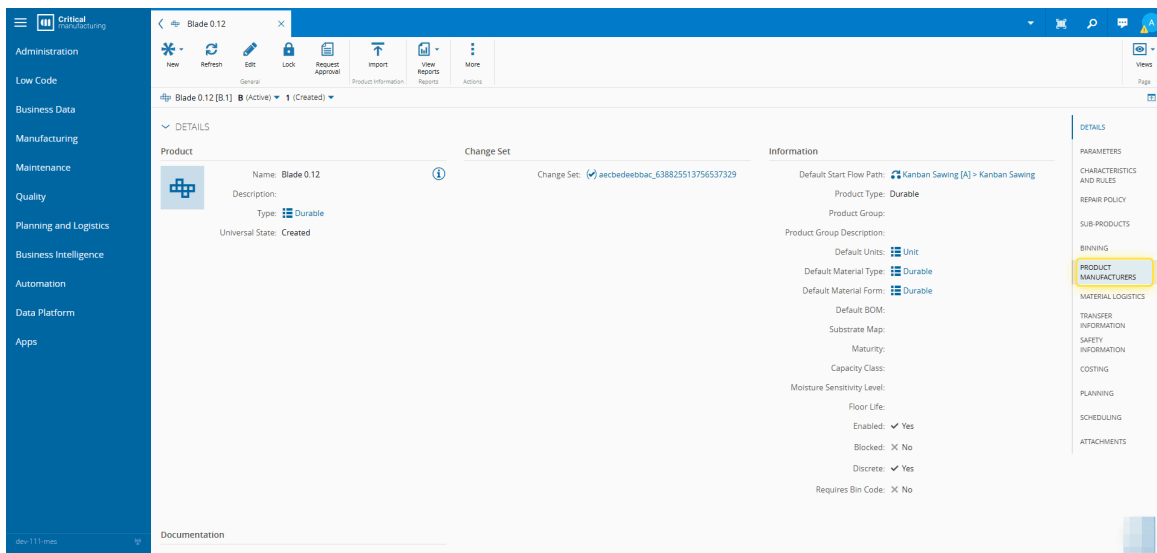


3. Select the Product you need.



NAME	DESCRIPTION	REVISION STATE	UNIV
Print Paste AVCO [A]		Default	Effect
Reel 14.2x8.3 [A]		Default	Effect
Reel 15.5x9.1 [A]		Default	Effect
Reel Box 450X350X300 [A]		Default	Effect
Reel Box 500X400X350 [A]		Default	Effect
Reticle Layer AZ#2EDN7524F [A]		Default	Effect
Reticle Layer AZ#2EDN8524F* [A]		Default	Effect
Reticle Layer AZ#2EGN7523G* [A]		Default	Effect

4. Select the PRODUCT MANUFACTURERS section.



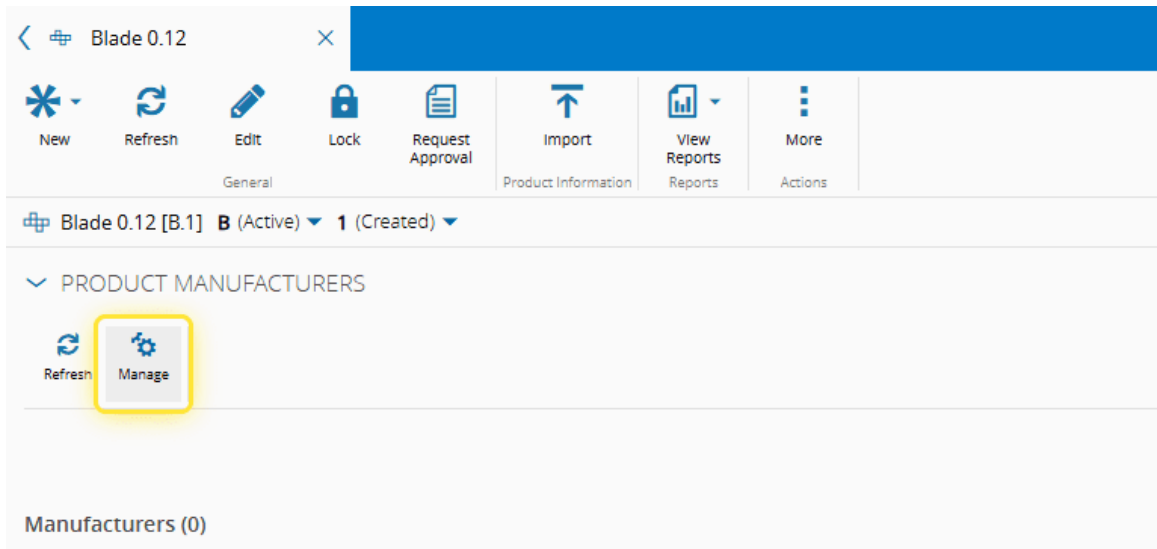
The screenshot shows the 'Blade 0.12' product details page. The left sidebar contains navigation options like Administration, Low Code, Business Data, Manufacturing, Maintenance, Quality, Planning and Logistics, Business Intelligence, Automation, Data Platform, and Apps. The main content area is divided into 'DETAILS' and 'Information' sections. The 'Information' section lists various product attributes such as Default Start Flow Path, Product Type, Product Group, Default Units, Default Material Type, Default Material Form, Default BOM, Substrate Map, Maturity, Capacity Class, Moisture Sensitivity Level, Floor Life, and various checkboxes for Enabled, Blocked, Discrete, and Requires Bin Code. On the right-hand side, a vertical sidebar lists additional sections: PARAMETERS, CHARACTERISTICS AND RULES, REPAIR POLICY, SUB-PRODUCTS, BINNING, **PRODUCT MANUFACTURERS** (highlighted), MATERIAL LOGISTICS, TRANSFER INFORMATION, SAFETY INFORMATION, COSTING, PLANNING, SCHEDULING, and ATTACHMENTS.

5. Select Manage.

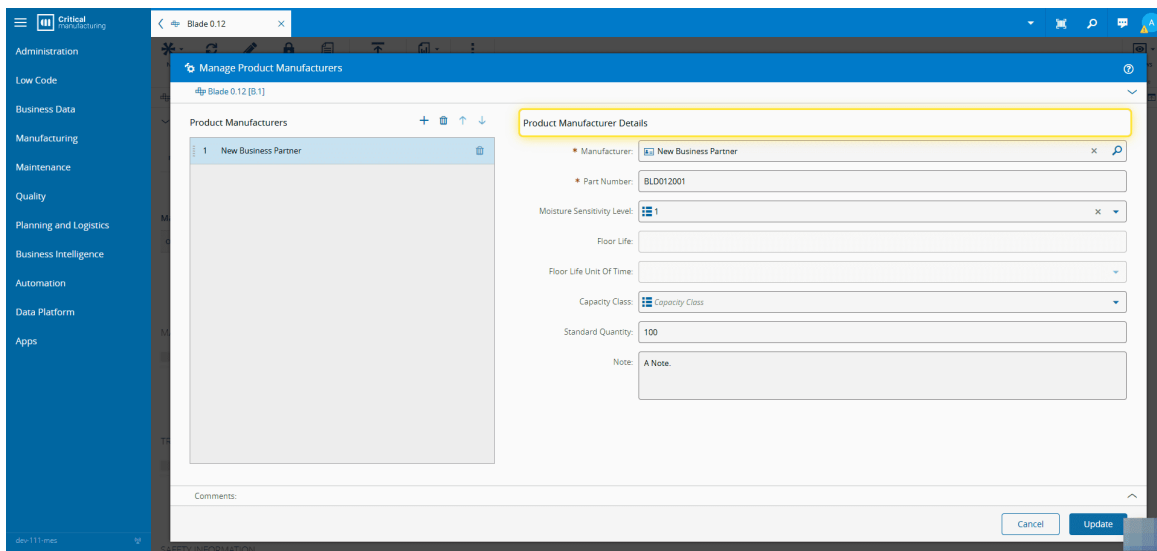
For more information, see [Manage Product Manufacturers - Critical Manufacturing Documentation Portal](#).



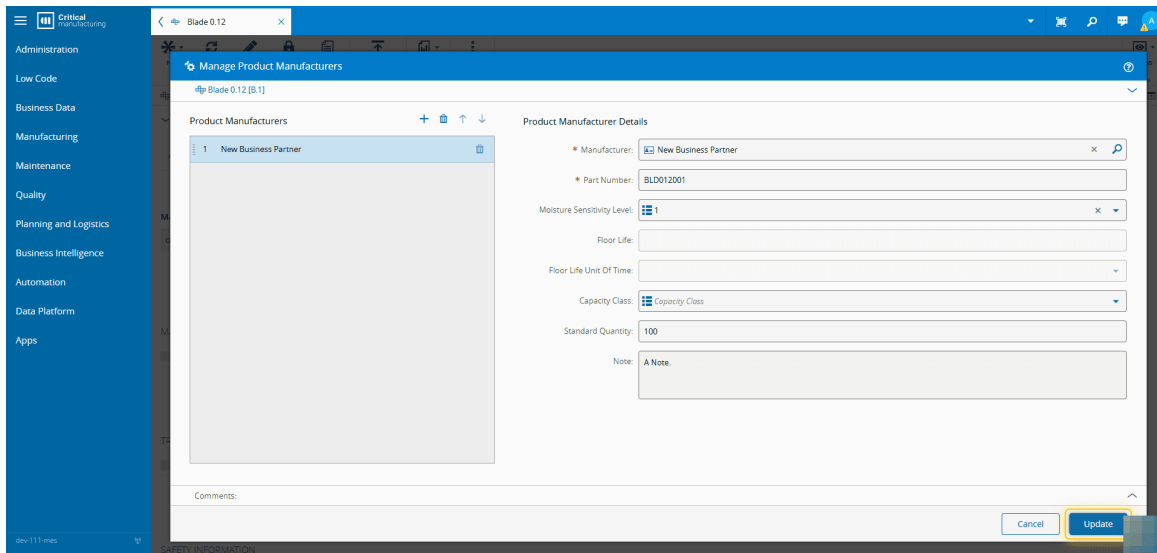
This option is only available for Products of type: Durable, Part and Raw Material.



6. Add, remove or re-order as needed.



7. Enter the necessary information and select Next.



The screenshot displays the 'Manage Product Manufacturers' application window. On the left is a navigation sidebar with categories like Administration, Low Code, Business Data, Manufacturing, Maintenance, Quality, Planning and Logistics, Business Intelligence, Automation, Data Platform, and Apps. The main area is split into two panes. The left pane, titled 'Product Manufacturers', contains a table with one entry: '1 New Business Partner'. The right pane, titled 'Product Manufacturer Details', contains a form with the following fields: 'Manufacturer' (New Business Partner), 'Part Number' (BLD012001), 'Moisture Sensitivity Level' (1), 'Floor Life' (empty), 'Floor Life Unit Of Time' (dropdown), 'Capacity Class' (Capacity Class), 'Standard Quantity' (100), and a 'Note' field with the text 'A Note'. At the bottom right of the form are 'Cancel' and 'Update' buttons, with the 'Update' button highlighted by a yellow box.



Legal Information

Disclaimer

The information contained in this document represents the current view of Critical Manufacturing on the issues discussed as of the date of publication. Because Critical Manufacturing must respond to changing market conditions, it should not be interpreted to be a commitment on the part of Critical Manufacturing, and Critical Manufacturing cannot guarantee the accuracy of any information presented after the date of publication. This document is for informational purposes only.

Critical Manufacturing makes no warranties, express, implied or statutory, as to the information herein contained.

Confidentiality Notice

All materials and information included herein are being provided by Critical Manufacturing to its Customer solely for Customer internal use for its business purposes. Critical Manufacturing retains all rights, titles, interests in and copyrights to the materials and information herein. The materials and information contained herein constitute confidential information of Critical Manufacturing and the Customer must not disclose or transfer by any means any of these materials or information, whether total or partial, to any third party without the prior explicit consent by Critical Manufacturing.

Copyright Information

All title and copyrights in and to the Software (including but not limited to any source code, binaries, designs, specifications, models, documents, layouts, images, photographs, animations, video, audio, music, text incorporated into the Software), the accompanying printed materials, and any copies of the Software, and any trademarks or service marks of Critical Manufacturing are owned by Critical Manufacturing unless explicitly stated otherwise. All title and intellectual property rights in and to the content that may be accessed through use of the Software is the property of the respective content owner and is protected by applicable copyright or other intellectual property laws and treaties.

Trademark Information

Critical Manufacturing is a registered trademark of Critical Manufacturing.

All other trademarks are property of their respective owners.