



**Critical**  
manufacturing  
an ASM PT company

# Scheduling Durables

## 11.2

February 2026

### DOCUMENT ACCESS

Public

### DISCLAIMER

The contents of this document are under copyright of Critical Manufacturing S.A. it is released on condition that it shall not be copied in whole, in part or otherwise reproduced (whether by photographic, or any other method) and the contents therefore shall not be divulged to any person other than that of the addressee (save to other authorized offices of his organization having need to know such contents, for the purpose for which disclosure is made) without prior written consent of submitting company.

## scheduling

# Scheduling Durables

Durables are tools which may be used together with a Resource in order to produce different Products. It may occur that, for the same Resource, different Products may require different durables. Furthermore, it may be possible that, for a single operation, more than one type of durables is required, with each individual durable having its own Maintenance Plan, and the same pool of durables can be shared across multiple Resources.

If durables are a constraining factor in the production process, given these considerations or others, it may become important to include them in scheduling. Scheduling supports durables scheduling, in other words, constraining the operations execution to when both the required Resource and durables are available.

**i** Durables scheduling significantly worsens the performance of scheduling in terms of time. Therefore, this functionality should only be activated when durables are a constraining factor.

In order to implement durable scheduling, it is necessary to:

- Activate durables scheduling
- Specify the durable availability
- Specify the durable demand

## Activating Durables Scheduling

Activating durable scheduling is done through the Schedule, with two properties:

- Schedule Durables - activates the functionality.
- Enforce Scheduled Durables at Track-In - when executing the Schedule the system will enforce, at Track-In, that the exact durables that were scheduled are the ones attached to the Resource (in other words, it is not just sufficient to have the correct quantity of durables of the correct Product, it must be the ones determined by scheduling).

### **i** Info

If the property `ExcludeFromScheduling` has been set to true at setup, the Durable Material will not be considered for scheduling.

**i** If the Schedule's property `Holds Processing Mode` is set to `Exclude` and the Durable is put on hold, it will not be considered for scheduling.

## Specifying the Durable Availability

For Durables to be considered, they must:

- Be in a Step where `Include in Scheduling` is set to `True`, and be present in an Area connected to the Schedule
- Belong to a Product that has both `Include in Schedule` and `Is Durable` set to `true`.

- Not have Exclude from Scheduling set to True and not be hold if the Schedule's property Holds Processing Mode is set to Exclude

#### Info

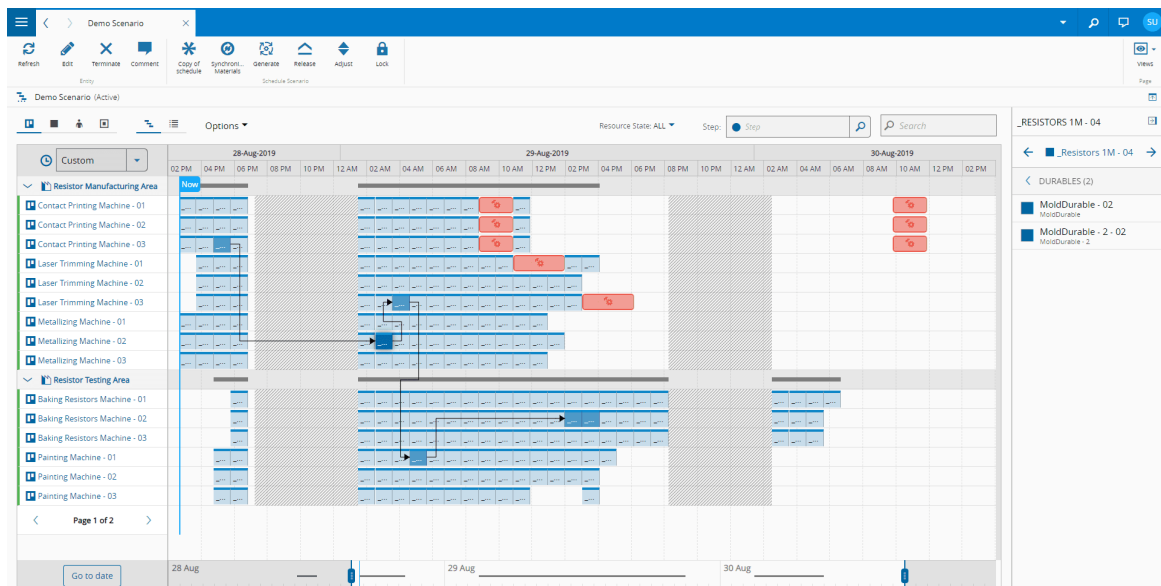
The processing Flow of the durable itself is not considered, that is, the scheduler will never attempt to plan the durable's processing through the various Steps of its Flow.

## Specifying the Durable Demand

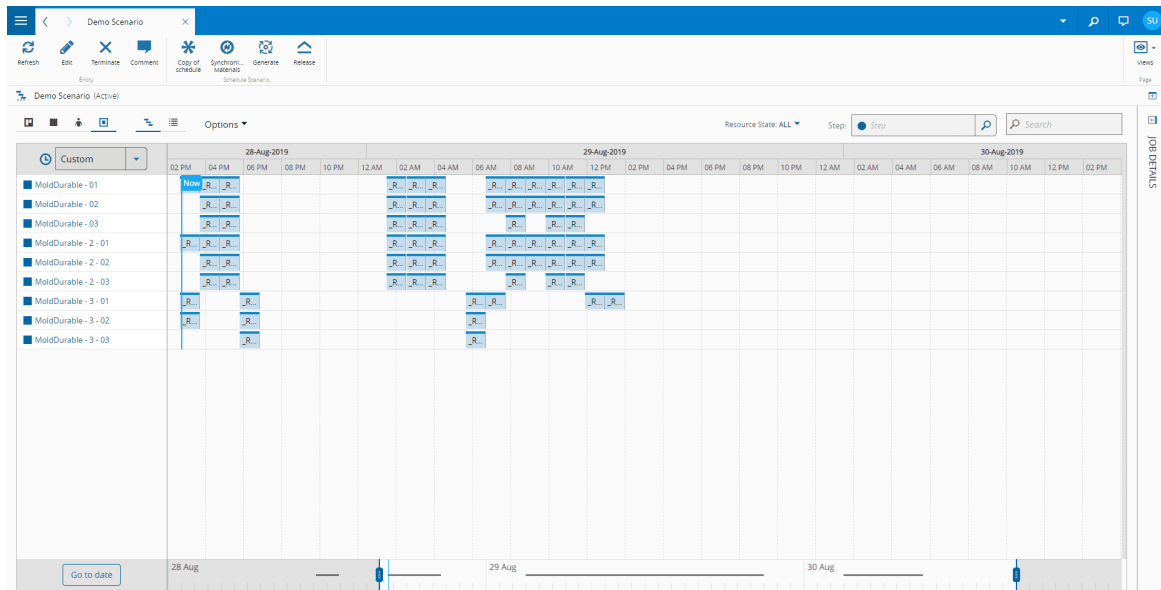
To implement Durable Demand, it is necessary to have:

- A BOM of Scope Durables, for each set of durables required.
- The MaterialDurablesContext smart table should provide a BOM for every context where durables are required. In addition, if Usage Steps are used in the BOM, then only BOM Products whose Usage Steps match the Step of the MaterialDurablesContext will be used for that Context.

It is possible to see the durable allocation to a particular Schedule Scenario Job by selecting the Job, opening the details tab on the right, and expanding the Tools tab.



In addition, by navigating to the Durables view, it is possible to see which Jobs are assigned to each Durable.





# Legal Information

## **Disclaimer**

The information contained in this document represents the current view of Critical Manufacturing on the issues discussed as of the date of publication. Because Critical Manufacturing must respond to changing market conditions, it should not be interpreted to be a commitment on the part of Critical Manufacturing, and Critical Manufacturing cannot guarantee the accuracy of any information presented after the date of publication. This document is for informational purposes only.

Critical Manufacturing makes no warranties, express, implied or statutory, as to the information herein contained.

## **Confidentiality Notice**

All materials and information included herein are being provided by Critical Manufacturing to its Customer solely for Customer internal use for its business purposes. Critical Manufacturing retains all rights, titles, interests in and copyrights to the materials and information herein. The materials and information contained herein constitute confidential information of Critical Manufacturing and the Customer must not disclose or transfer by any means any of these materials or information, whether total or partial, to any third party without the prior explicit consent by Critical Manufacturing.

## **Copyright Information**

All title and copyrights in and to the Software (including but not limited to any source code, binaries, designs, specifications, models, documents, layouts, images, photographs, animations, video, audio, music, text incorporated into the Software), the accompanying printed materials, and any copies of the Software, and any trademarks or service marks of Critical Manufacturing are owned by Critical Manufacturing unless explicitly stated otherwise. All title and intellectual property rights in and to the content that may be accessed through use of the Software is the property of the respective content owner and is protected by applicable copyright or other intellectual property laws and treaties.

## **Trademark Information**

Critical Manufacturing is a registered trademark of Critical Manufacturing.

All other trademarks are property of their respective owners.