

How to: Create an Automation Protocol

11.2

February 2026

DOCUMENT ACCESS

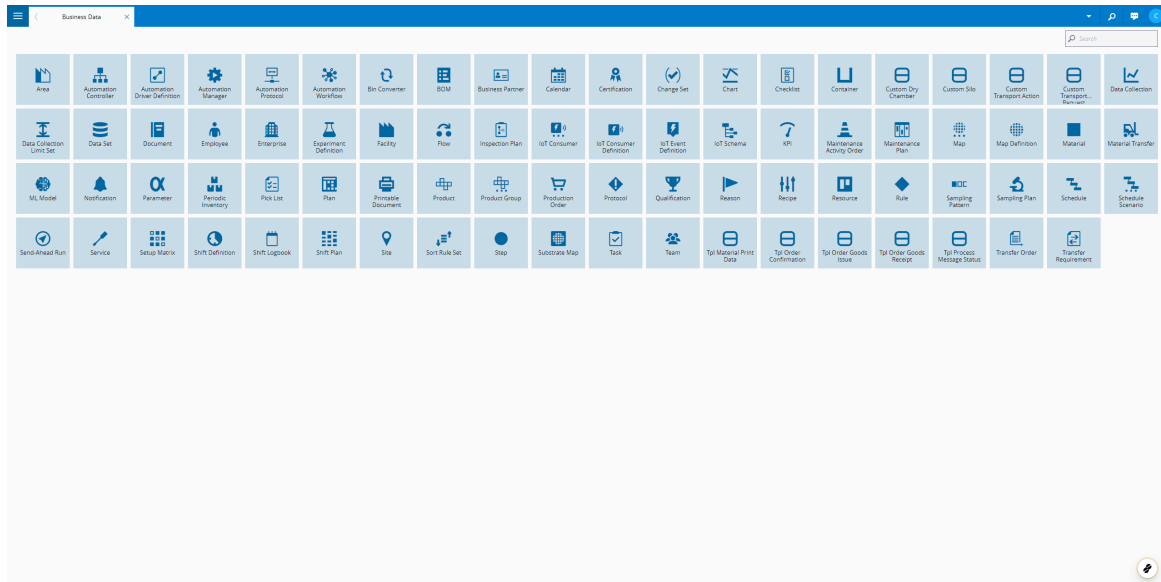
Public

DISCLAIMER

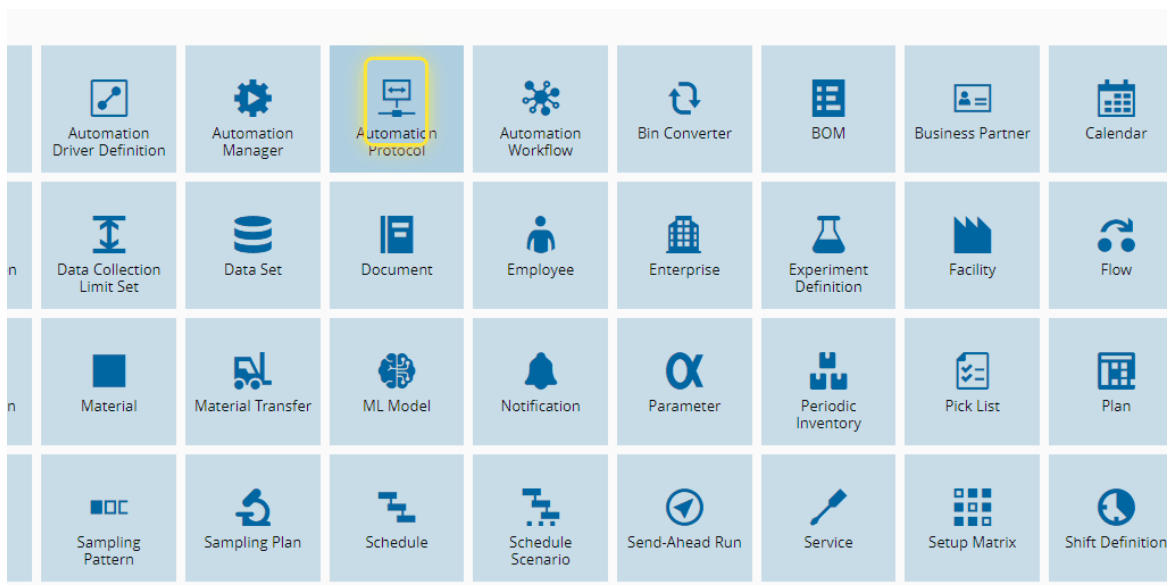
The contents of this document are under copyright of Critical Manufacturing S.A. it is released on condition that it shall not be copied in whole, in part or otherwise reproduced (whether by photographic, or any other method) and the contents therefore shall not be divulged to any person other than that of the addressee (save to other authorized offices of his organization having need to know such contents, for the purpose for which disclosure is made) without prior written consent of submitting company.

How to: Create an Automation Protocol

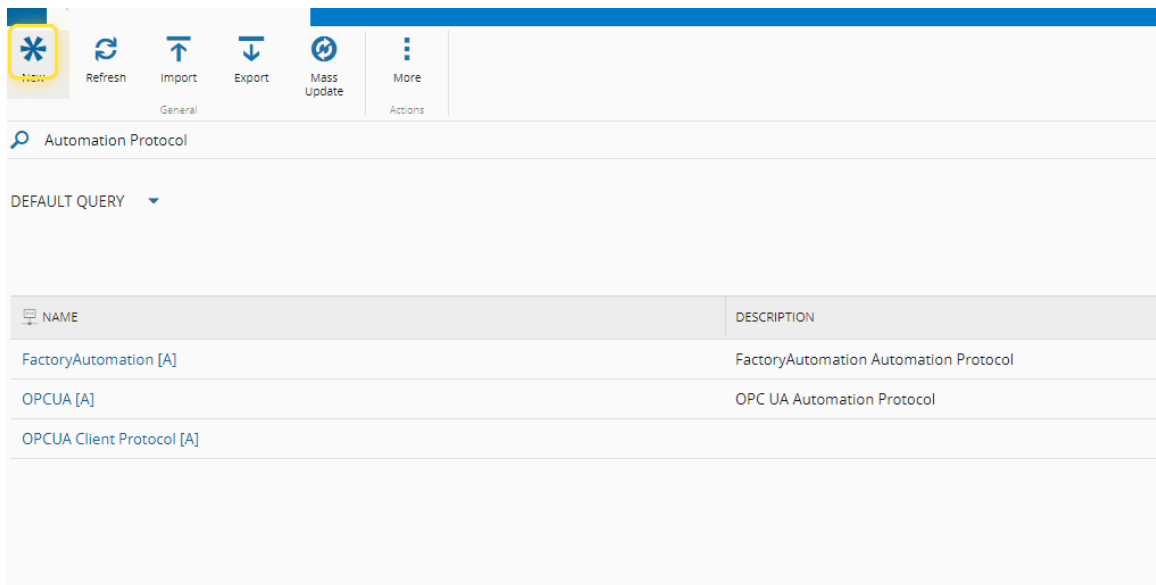
1. Go to the Business Data menu.



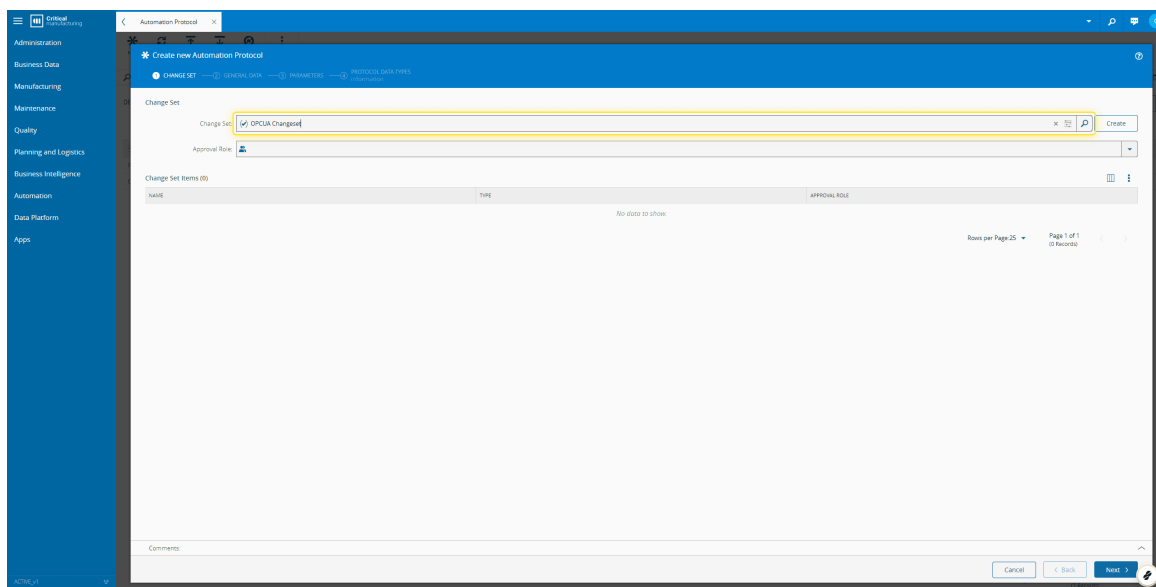
2. Select The Automation Protocol tile




3. Select New



4. Add a ChangeSet



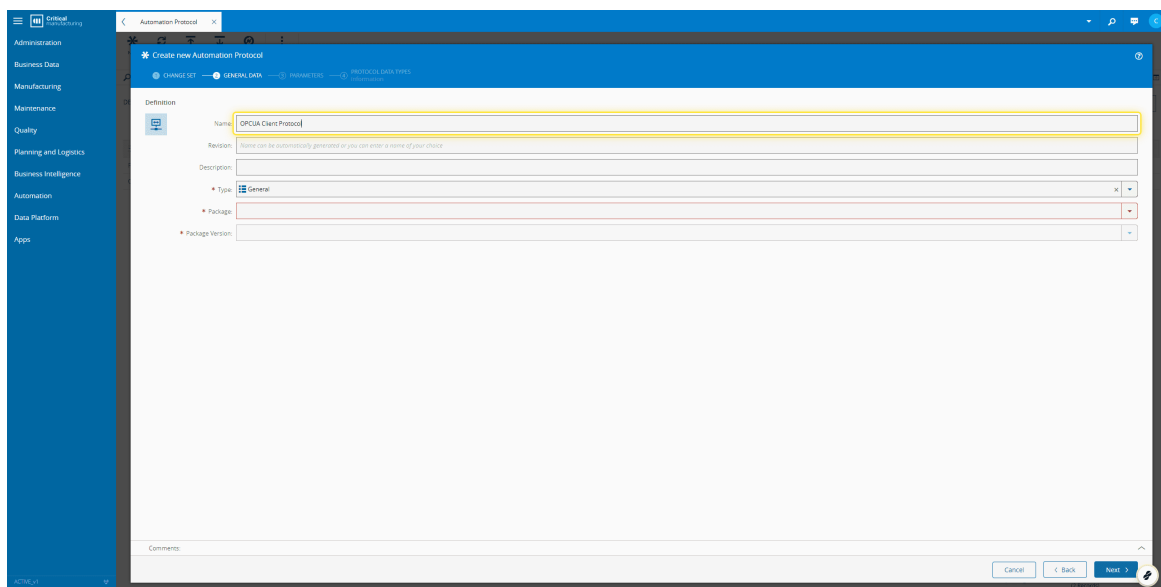
5. Select Next



Automation Protocol

Cancel < Back **Next >**

6. Provide a Name for your Automation Protocol



Automation Protocol

Create new Automation Protocol

CHANGE SET GENERAL DATA PROPERTIES PROTOCOL DATA MODEL

Definition

Name: **OPCUA Client Protocol**

Revision: Name can be automatically generated or you can enter a name of your choice

Description:

Type: General

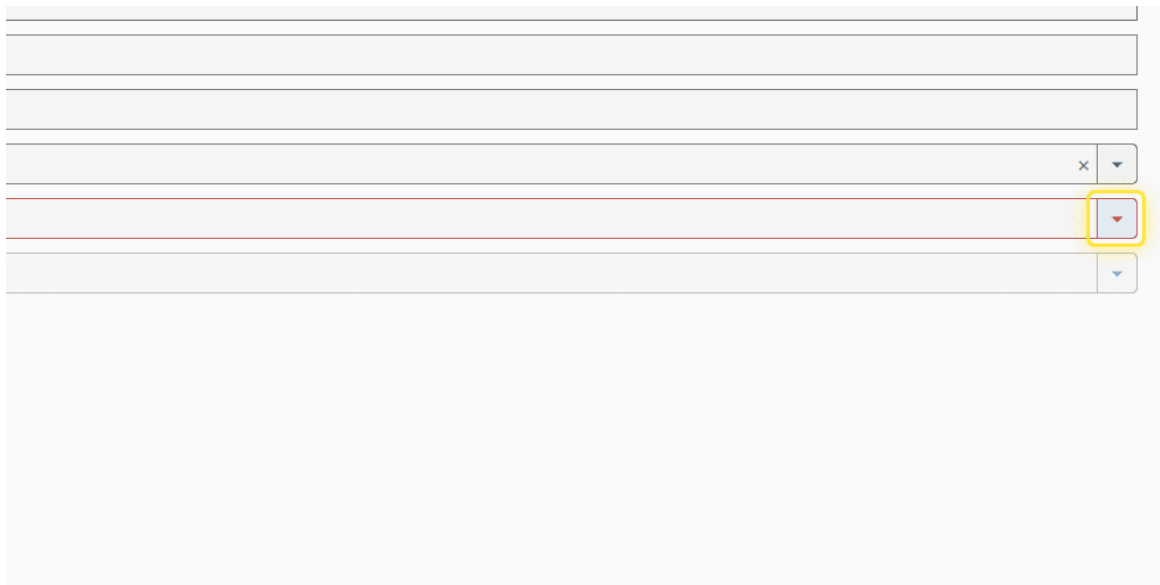
Package:

Package Version:

Comments:

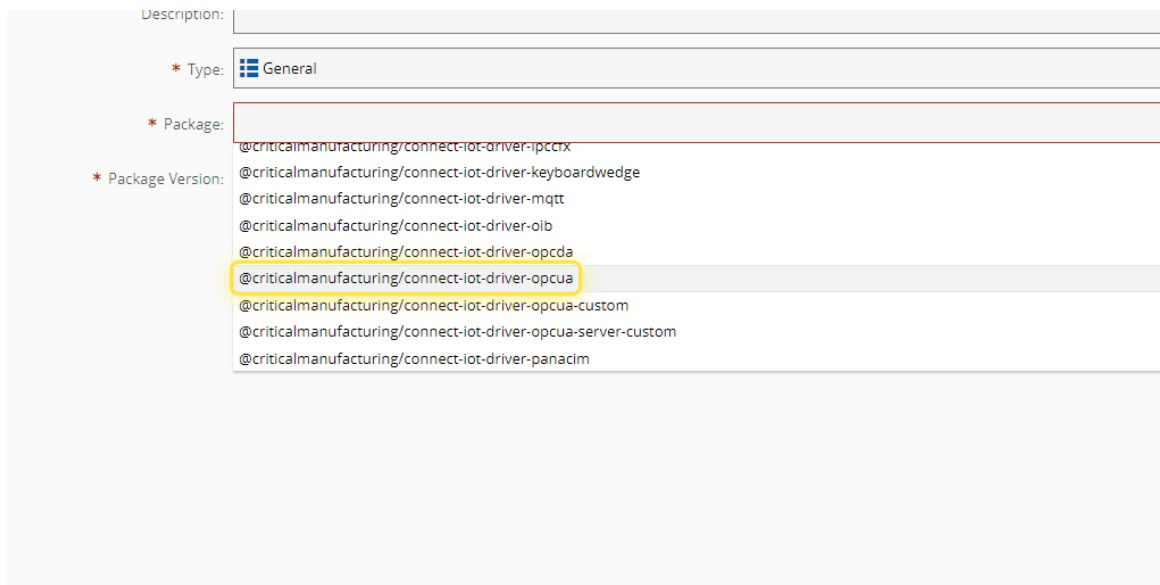
Cancel < Back **Next >**

7. Select the Driver package that you depend on



The screenshot shows a software interface with a list of items. A dropdown menu is open, and the option `@criticalmanufacturing/connect-iot-driver-opcua` is highlighted. The interface includes a search bar at the top and a list of items below it.

8. Select @criticalmanufacturing/connect-iot-driver-opcua



The screenshot shows the software interface with the `* Package Version:` dropdown menu open. The option `@criticalmanufacturing/connect-iot-driver-opcua` is highlighted. The list of package versions includes:

- `@criticalmanufacturing/connect-iot-driver-ipccrx`
- `@criticalmanufacturing/connect-iot-driver-keyboardwedge`
- `@criticalmanufacturing/connect-iot-driver-mqtt`
- `@criticalmanufacturing/connect-iot-driver-oib`
- `@criticalmanufacturing/connect-iot-driver-opcda`
- `@criticalmanufacturing/connect-iot-driver-opcua` (highlighted)
- `@criticalmanufacturing/connect-iot-driver-opcua-custom`
- `@criticalmanufacturing/connect-iot-driver-opcua-server-custom`
- `@criticalmanufacturing/connect-iot-driver-panacim`

9. Select the desired package version

Create new Automation Protocol

1 CHANGE SET — 2 GENERAL DATA — 3 PARAMETERS — 4 PROTOCOL DATA TYPES information

Definition

Name: OPCUA Client Protocol

Revision: *Name can be automatically generated or you can enter a name of your choice*

Description:

* Type: General

* Package: @criticalmanufacturing/connect-iot-driver-opcua

* Package Version:

10. Select the version you wish to use

Description:

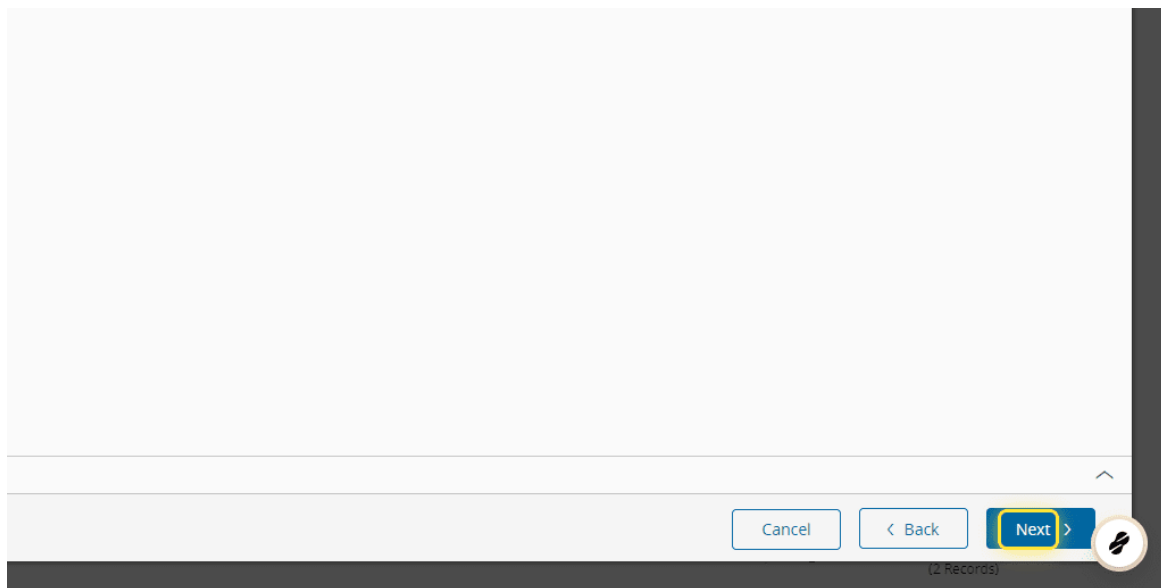
* Type: General

* Package: @criticalmanufacturing/connect-iot-driver-opcua

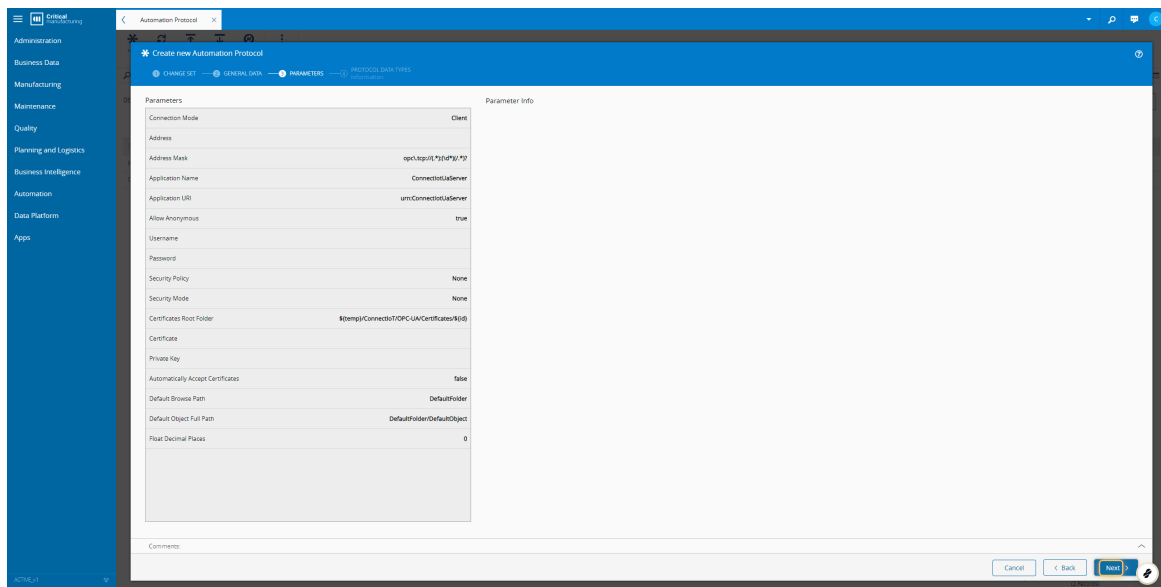
* Package Version:

- 10.1.2-202309224
- 10.1.0-202307272
- 10.0.3-202306236
- 8.3.7-202205275
- 8.3.3-202201212
- 8.3.2-202112215
- 8.3.0-202110283

11. Select Next



12. You can Edit the default Parameters or just press Next



13. Select Create

rpe

	DATA TYPE	DEFAULT VALUE
	String	
	String	
	Integer	100
	String	
	String	
	String	Input
	String	Subscription
	Integer	1000

Cancel < Back Create



Legal Information

Disclaimer

The information contained in this document represents the current view of Critical Manufacturing on the issues discussed as of the date of publication. Because Critical Manufacturing must respond to changing market conditions, it should not be interpreted to be a commitment on the part of Critical Manufacturing, and Critical Manufacturing cannot guarantee the accuracy of any information presented after the date of publication. This document is for informational purposes only.

Critical Manufacturing makes no warranties, express, implied or statutory, as to the information herein contained.

Confidentiality Notice

All materials and information included herein are being provided by Critical Manufacturing to its Customer solely for Customer internal use for its business purposes. Critical Manufacturing retains all rights, titles, interests in and copyrights to the materials and information herein. The materials and information contained herein constitute confidential information of Critical Manufacturing and the Customer must not disclose or transfer by any means any of these materials or information, whether total or partial, to any third party without the prior explicit consent by Critical Manufacturing.

Copyright Information

All title and copyrights in and to the Software (including but not limited to any source code, binaries, designs, specifications, models, documents, layouts, images, photographs, animations, video, audio, music, text incorporated into the Software), the accompanying printed materials, and any copies of the Software, and any trademarks or service marks of Critical Manufacturing are owned by Critical Manufacturing unless explicitly stated otherwise. All title and intellectual property rights in and to the content that may be accessed through use of the Software is the property of the respective content owner and is protected by applicable copyright or other intellectual property laws and treaties.

Trademark Information

Critical Manufacturing is a registered trademark of Critical Manufacturing.

All other trademarks are property of their respective owners.