

How to: Set a Calendar Day as Non-Working Day

11.2

February 2026

DOCUMENT ACCESS

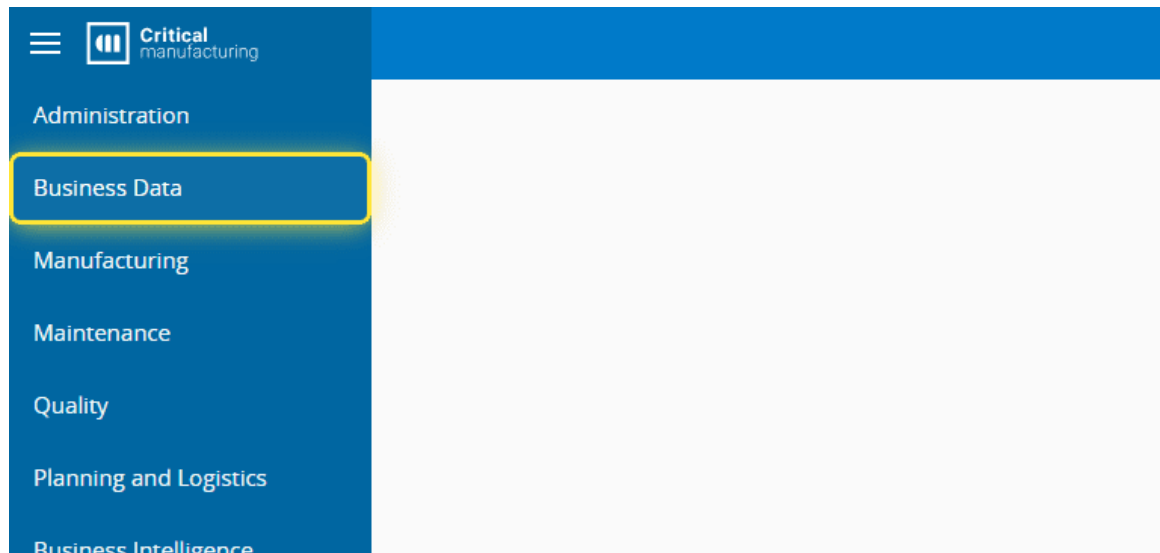
Public

DISCLAIMER

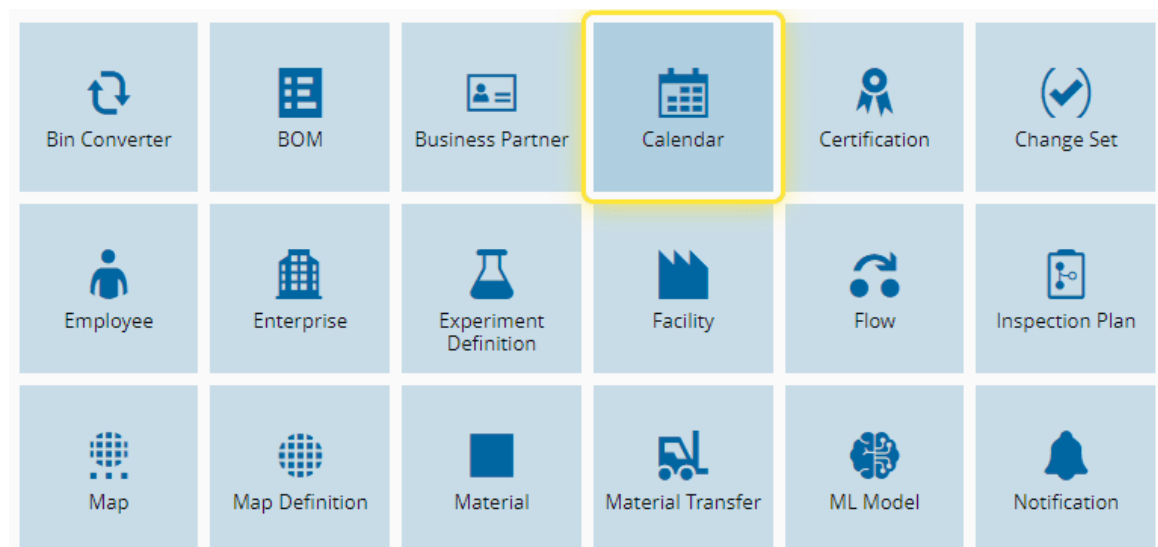
The contents of this document are under copyright of Critical Manufacturing S.A. it is released on condition that it shall not be copied in whole, in part or otherwise reproduced (whether by photographic, or any other method) and the contents therefore shall not be divulged to any person other than that of the addressee (save to other authorized offices of his organization having need to know such contents, for the purpose for which disclosure is made) without prior written consent of submitting company.

How to: Set a Calendar Day as Non-Working Day

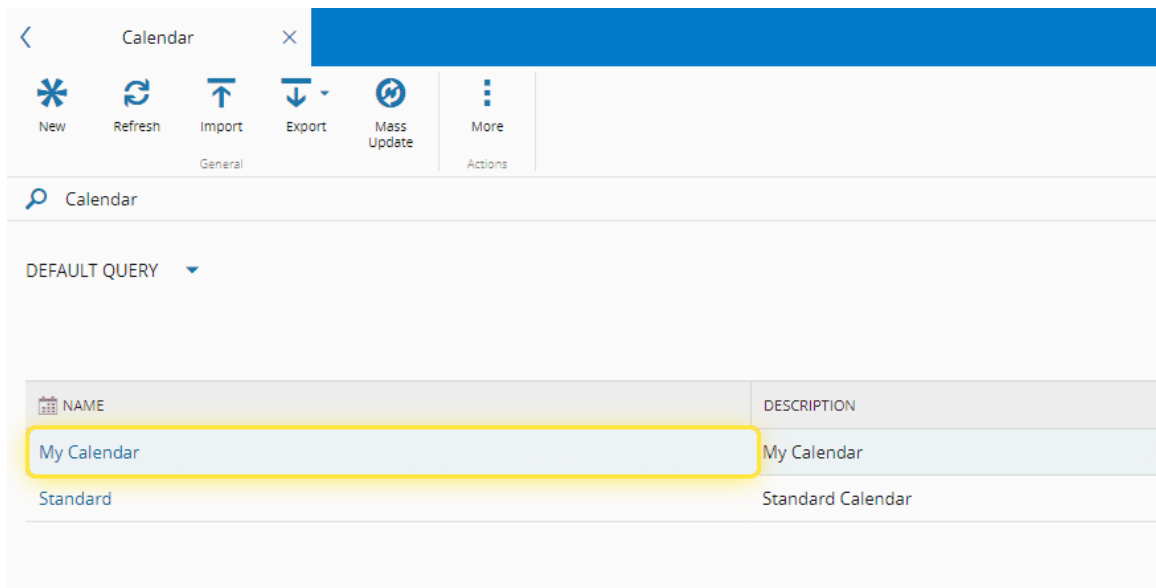
1. Go to the Business Data menu.



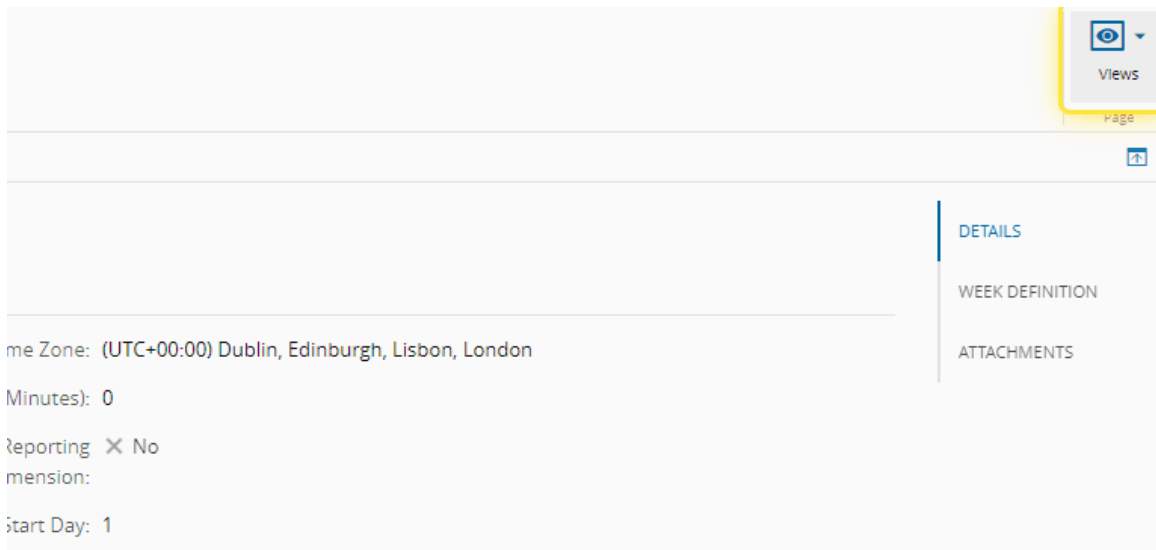
2. Select the Calendar Entity.



3. Select the desired Calendar.



4. Select the Views button.



5. Select the Calendar Days option.

Details

Calendar Days

References

History

Time Zone: (UTC+00:00) Dublin, Edinburgh, Lisbon, London

Minutes): 0

Reporting ☒ No

Dimension:

Start Day: 1

Start Month: January

Start Day: Monday

6. Select the desired day to set as a Non-Working Day.

<

My Calendar

×

Refresh

More

General

Actions

My Calendar (Active)

2023

< TODAY >

Calendar

Calendar

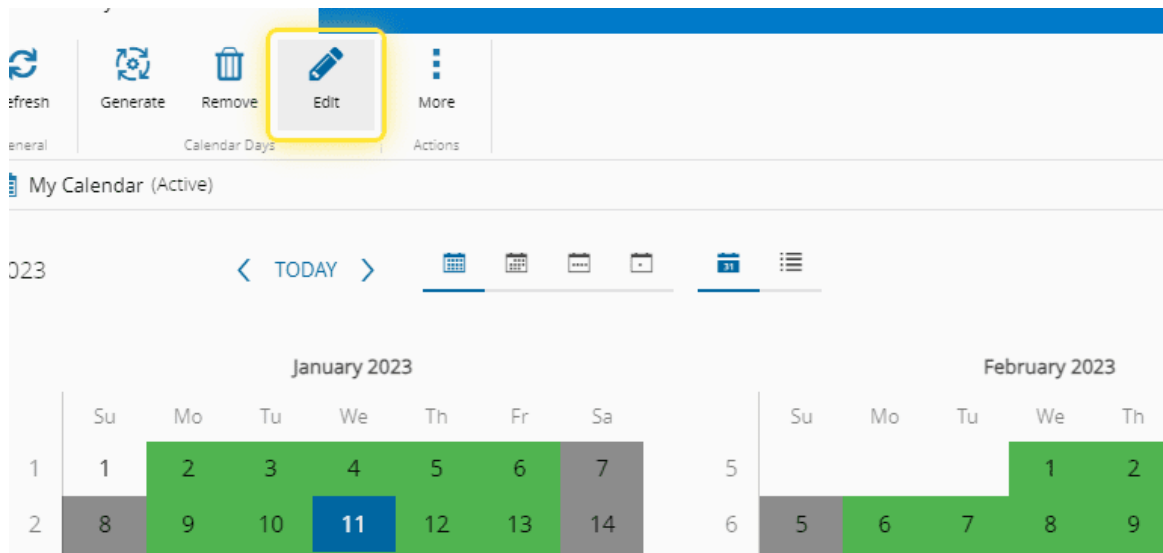
Calendar

Calendar

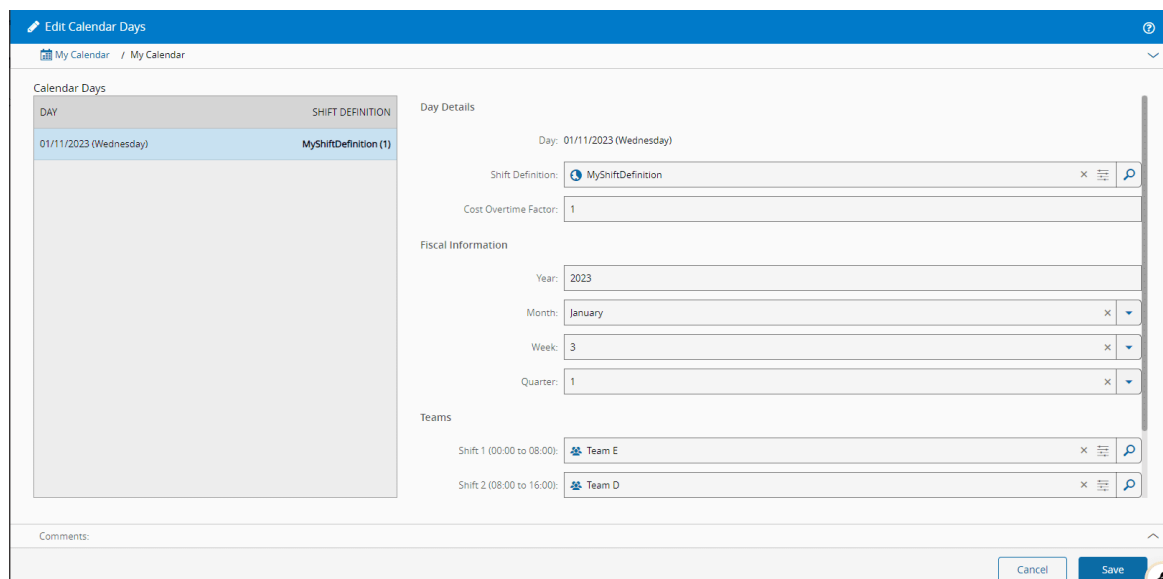
January 2023

	Su	Mo	Tu	We	Th	Fr	Sa
1	1	2	3	4	5	6	7
2	8	9	10	11	12	13	14
3	15	16	17	18	19	20	21
4	22	23	24	25	26	27	28
5	29	30	31				

7. Select the Edit button.



8. Under the Edit Calendar Day wizard you can verify the Shift Definition in place.



9. Remove the Shift Definition.



10. After removing the Shift Definition you can see the day considered as a Non-Working Day.

Edit Calendar Days

My Calendar / My Calendar

DAY	SHIFT DEFINITION
01/11/2023 (Wednesday)	Non-working day

Day Details

Day: 01/11/2023 (Wednesday)

Shift Definition:

Cost Overtime Factor:

Fiscal Information

Year:

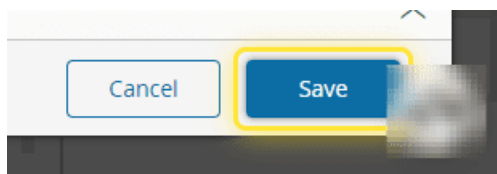
Month:

Week:

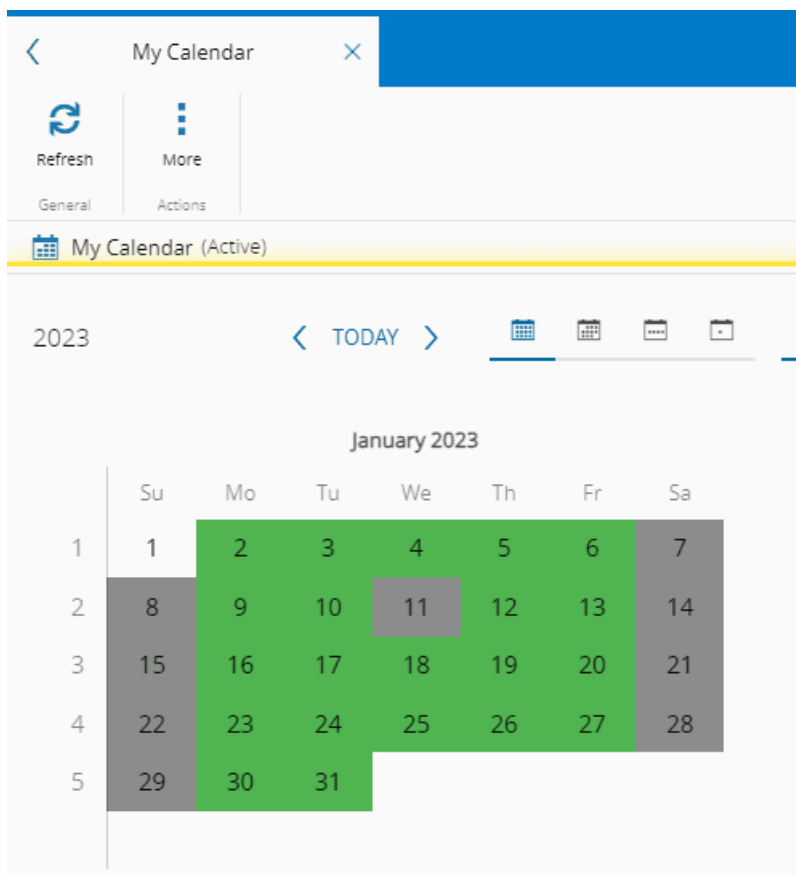
Quarter:

Comments:

11. Select the Save button.



12. Verify that the selected day is now a Non-Working Day.





Legal Information

Disclaimer

The information contained in this document represents the current view of Critical Manufacturing on the issues discussed as of the date of publication. Because Critical Manufacturing must respond to changing market conditions, it should not be interpreted to be a commitment on the part of Critical Manufacturing, and Critical Manufacturing cannot guarantee the accuracy of any information presented after the date of publication. This document is for informational purposes only.

Critical Manufacturing makes no warranties, express, implied or statutory, as to the information herein contained.

Confidentiality Notice

All materials and information included herein are being provided by Critical Manufacturing to its Customer solely for Customer internal use for its business purposes. Critical Manufacturing retains all rights, titles, interests in and copyrights to the materials and information herein. The materials and information contained herein constitute confidential information of Critical Manufacturing and the Customer must not disclose or transfer by any means any of these materials or information, whether total or partial, to any third party without the prior explicit consent by Critical Manufacturing.

Copyright Information

All title and copyrights in and to the Software (including but not limited to any source code, binaries, designs, specifications, models, documents, layouts, images, photographs, animations, video, audio, music, text incorporated into the Software), the accompanying printed materials, and any copies of the Software, and any trademarks or service marks of Critical Manufacturing are owned by Critical Manufacturing unless explicitly stated otherwise. All title and intellectual property rights in and to the content that may be accessed through use of the Software is the property of the respective content owner and is protected by applicable copyright or other intellectual property laws and treaties.

Trademark Information

Critical Manufacturing is a registered trademark of Critical Manufacturing.

All other trademarks are property of their respective owners.