

# How to: Manage Product Manufacturers

## 11.2

February 2026

### DOCUMENT ACCESS

Public

### DISCLAIMER

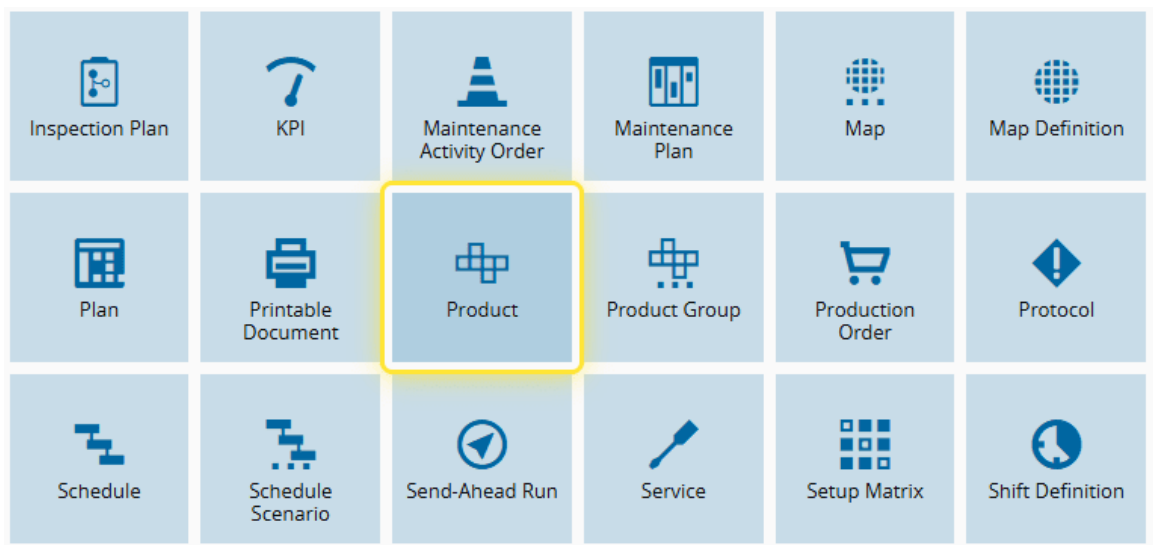
The contents of this document are under copyright of Critical Manufacturing S.A. it is released on condition that it shall not be copied in whole, in part or otherwise reproduced (whether by photographic, or any other method) and the contents therefore shall not be divulged to any person other than that of the addressee (save to other authorized offices of his organization having need to know such contents, for the purpose for which disclosure is made) without prior written consent of submitting company.

## How to: Manage Product Manufacturers

1. Go to the Business Data menu.



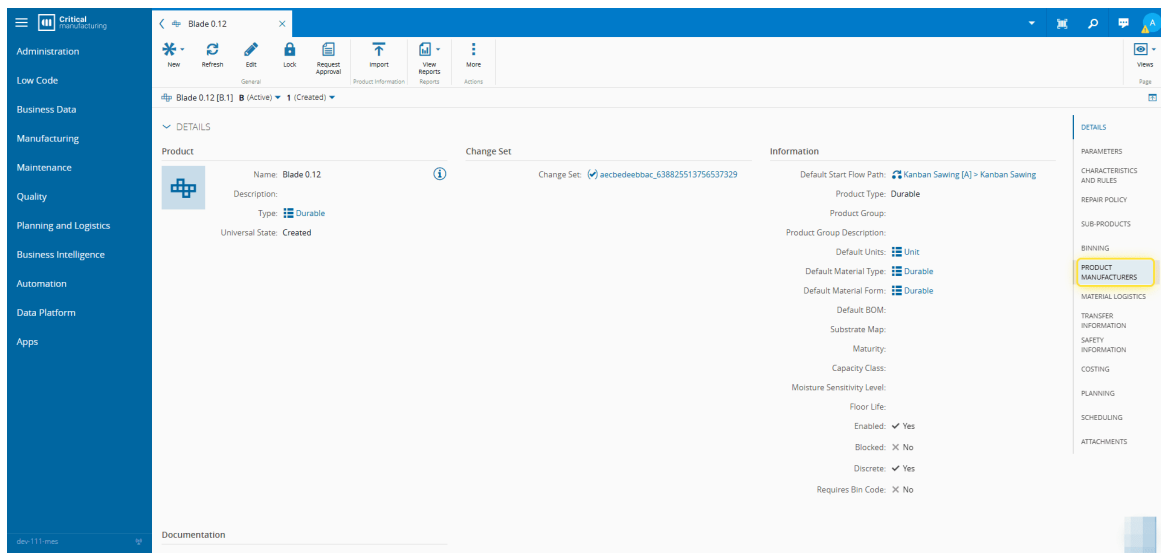
2. Select the Product entity.



3. Select the Product you need.

Product			
<div> <div>New Refresh Import Export Mass Update More</div> <div>General Actions</div> </div>			
Product			
DEFAULT QUERY			REVISION :
NAME	DESCRIPTION	REVISION STATE	UNIV
Print Paste AVCO [A]		Default	Effect
Reel 14.2x8.3 [A]		Default	Effect
Reel 15.5x9.1 [A]		Default	Effect
Reel Box 450X350X300 [A]		Default	Effect
Reel Box 500X400X350 [A]		Default	Effect
Reticle Layer AZ#2EDN7524F [A]		Default	Effect
Reticle Layer AZ#2EDN8524F* [A]		Default	Effect
Reticle Layer AZ#2EGN7523G* [A]		Default	Effect

#### 4. Select the PRODUCT MANUFACTURERS section.



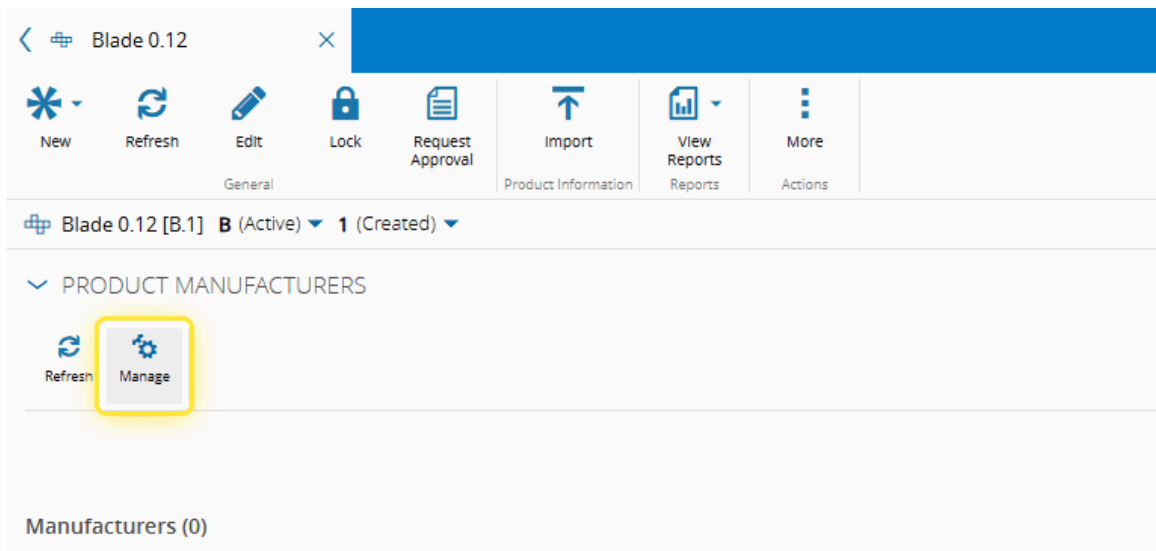
The screenshot shows the Critical Manufacturing software interface. On the left is a sidebar with navigation options: Administration, Low Code, Business Data, Manufacturing, Maintenance, Quality, Planning and Logistics, Business Intelligence, Automation, Data Platform, and Apps. The 'Manufacturing' section is selected. The main area displays details for 'Blade 0.12'. The 'DETAILS' tab is active, showing product information, change set, and information. The 'PRODUCT MANUFACTURERS' section is highlighted in the right sidebar. The product details include: Name: Blade 0.12, Description: , Type: Durable, Universal State: Created. The change set is 'aeebedeebbac\_638825513756537329'. The information section lists various attributes like Default Start Flow Path, Product Type, Product Group Description, Default Units, Default Material Type, Default Material Form, Default BOM, Substrate Map, Maturity, Capacity Class, Moisture Sensitivity Level, Floor Life, Enabled, Blocked, Discrete, and Requires Bin Code.

#### 5. Select Manage.

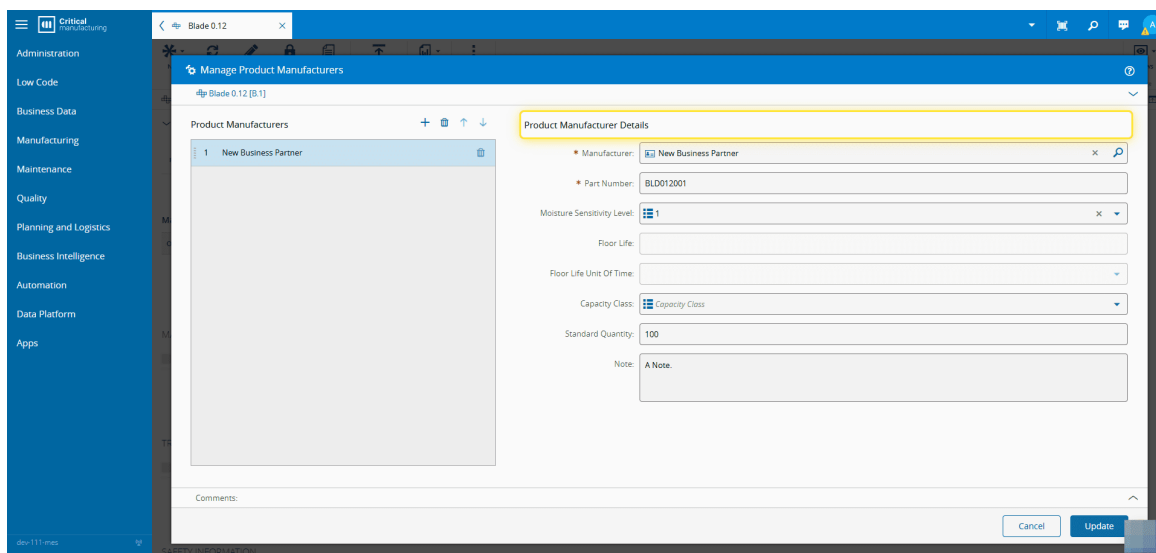
For more information, see [Manage Product Manufacturers - Critical Manufacturing Documentation Portal](#).



This option is only available for Products of type: Durable, Part and Raw Material.



6. Add, remove or re-order as needed.



7. Enter the necessary information and select Next.

Critical manufacturing

Administration

Low Code

Business Data

Manufacturing

Maintenance

Quality

Planning and Logistics

Business Intelligence

Automation

Data Platform

Apps

Blade 0.12

Manage Product Manufacturers

Blade 0.12 [B.1]

Product Manufacturers

+ - ↑ ↓

1 New Business Partner

Product Manufacturer Details

Manufacturer: New Business Partner

Part Number: BLD012001

Moisture Sensitivity Level: 1

Floor Life:

Floor Life Unit Of Time:

Capacity Class: Capacity Class

Standard Quantity: 100

Note: A Note

Comments:

Cancel Update



# Legal Information

## **Disclaimer**

The information contained in this document represents the current view of Critical Manufacturing on the issues discussed as of the date of publication. Because Critical Manufacturing must respond to changing market conditions, it should not be interpreted to be a commitment on the part of Critical Manufacturing, and Critical Manufacturing cannot guarantee the accuracy of any information presented after the date of publication. This document is for informational purposes only.

Critical Manufacturing makes no warranties, express, implied or statutory, as to the information herein contained.

## **Confidentiality Notice**

All materials and information included herein are being provided by Critical Manufacturing to its Customer solely for Customer internal use for its business purposes. Critical Manufacturing retains all rights, titles, interests in and copyrights to the materials and information herein. The materials and information contained herein constitute confidential information of Critical Manufacturing and the Customer must not disclose or transfer by any means any of these materials or information, whether total or partial, to any third party without the prior explicit consent by Critical Manufacturing.

## **Copyright Information**

All title and copyrights in and to the Software (including but not limited to any source code, binaries, designs, specifications, models, documents, layouts, images, photographs, animations, video, audio, music, text incorporated into the Software), the accompanying printed materials, and any copies of the Software, and any trademarks or service marks of Critical Manufacturing are owned by Critical Manufacturing unless explicitly stated otherwise. All title and intellectual property rights in and to the content that may be accessed through use of the Software is the property of the respective content owner and is protected by applicable copyright or other intellectual property laws and treaties.

## **Trademark Information**

Critical Manufacturing is a registered trademark of Critical Manufacturing.

All other trademarks are property of their respective owners.